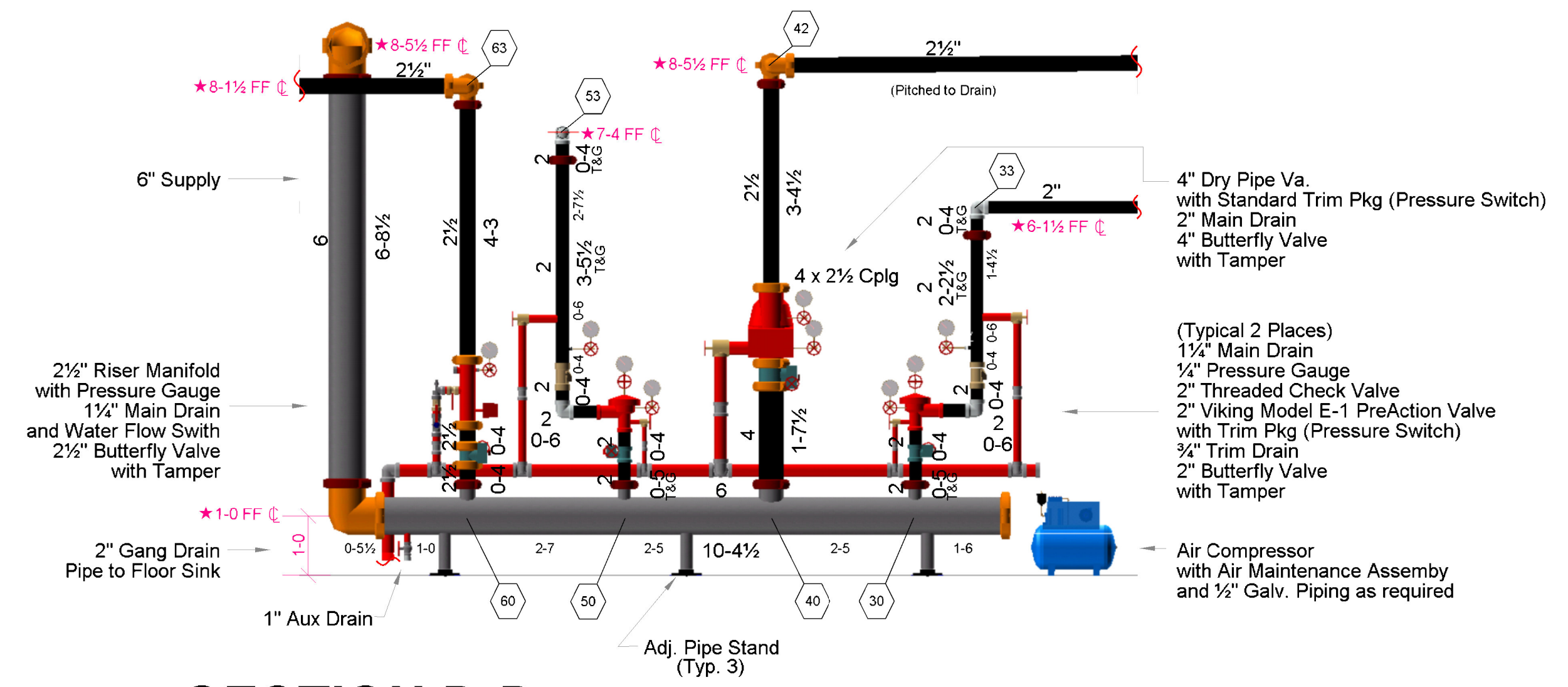
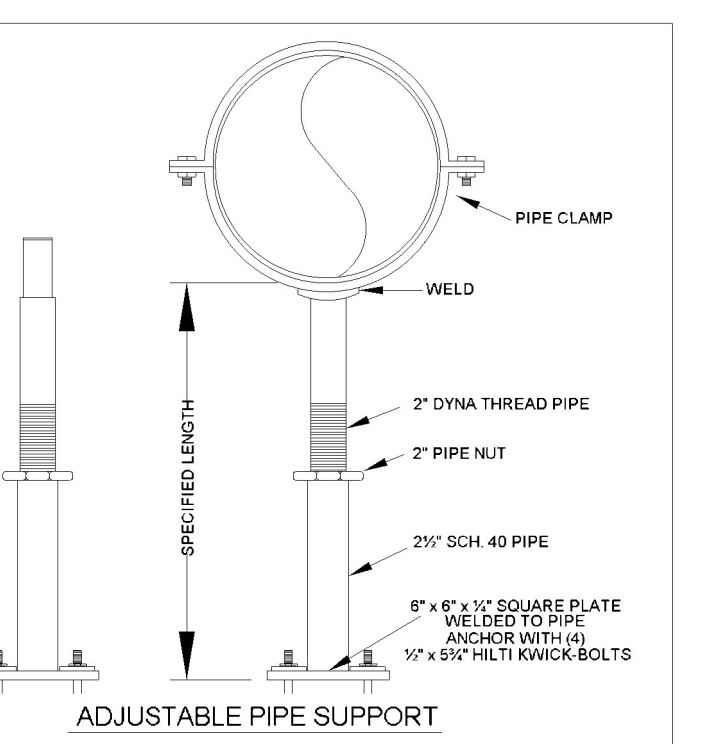
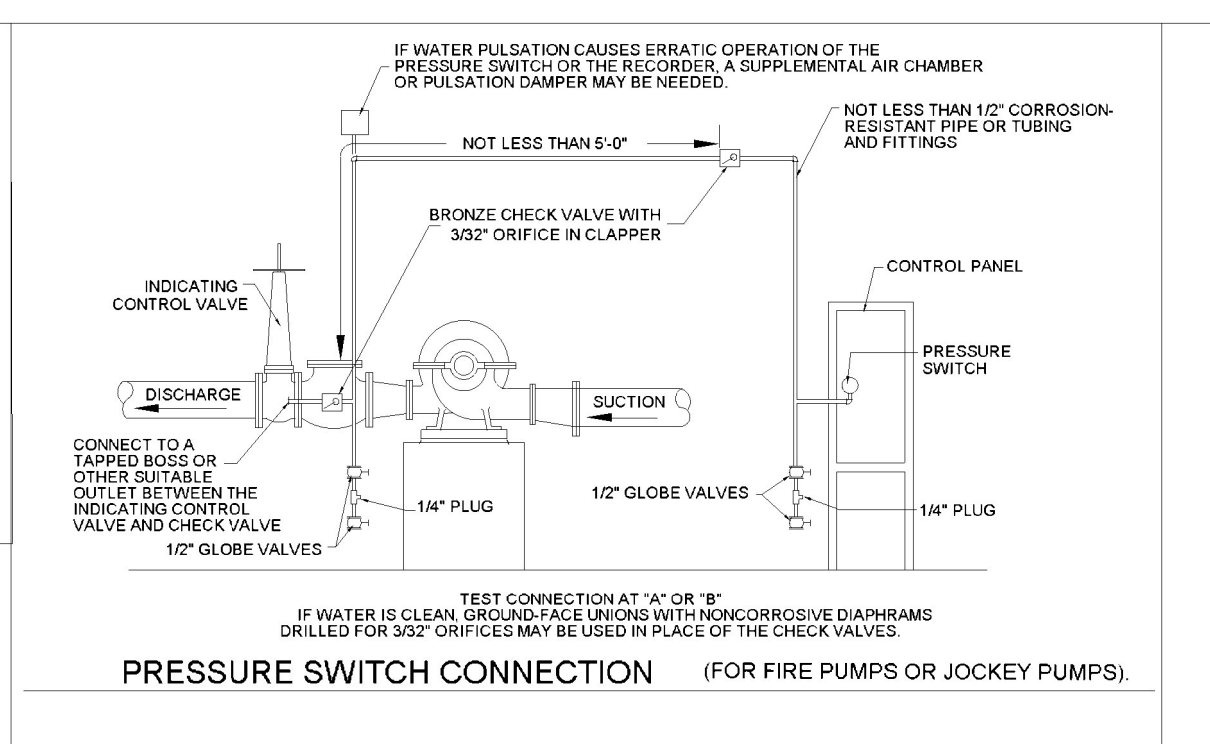
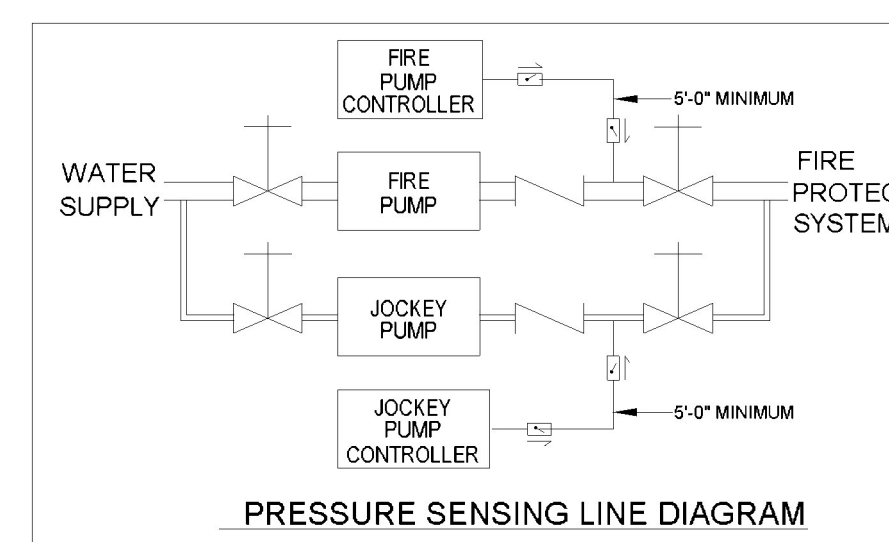


FIRE PUMP ROOM

SCALE: 1/2"=1'-0"



SECTION D-D

SCALE: 1/2"=1'-0"

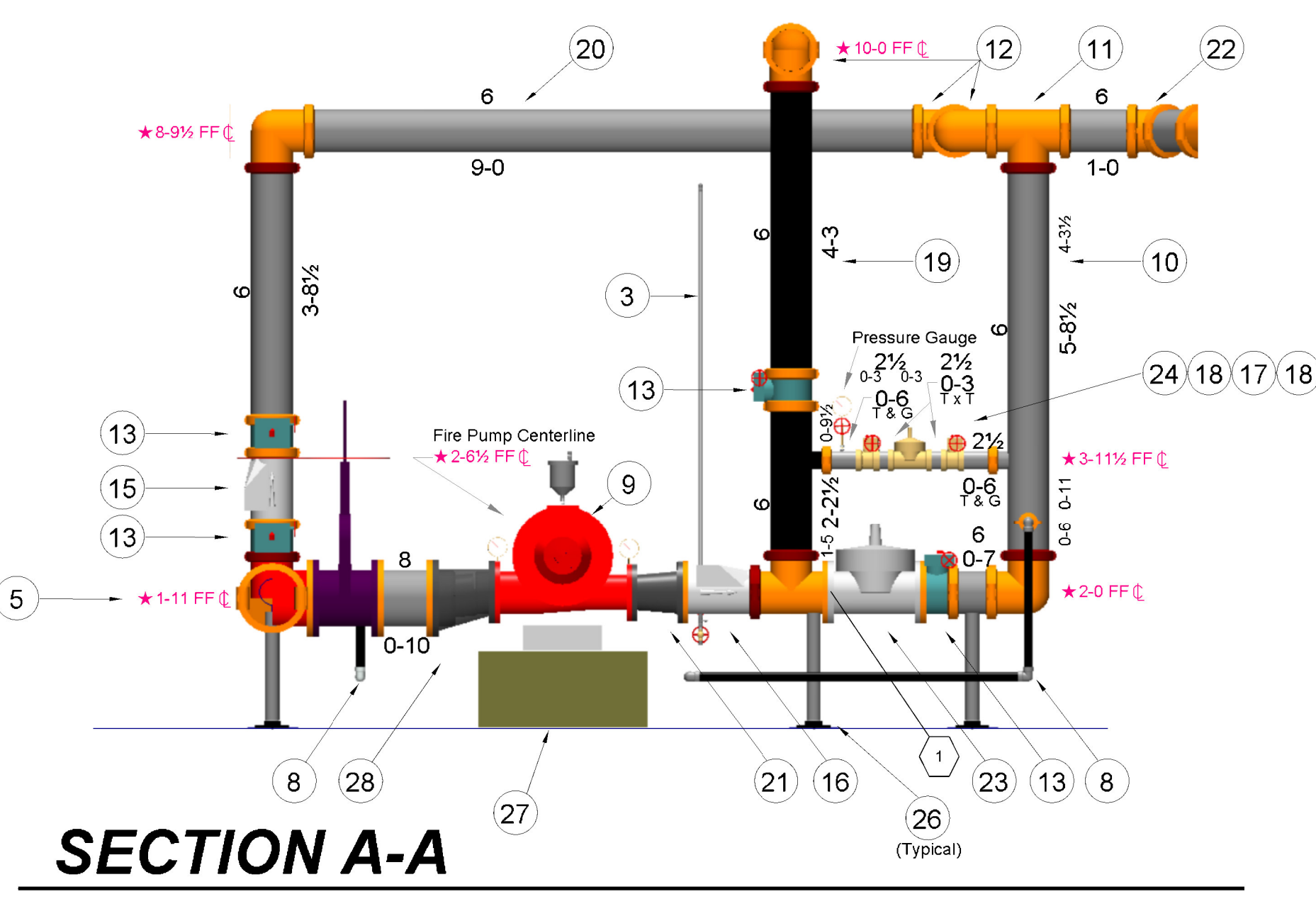
See FP-1 for Pump Room sprinklers
 FOR ADDITIONAL GENERAL NOTES AND HANGER DETAILS SEE SHEET FP-1

GENERAL NOTES

- All materials to be UL &/or FM listed for Fire Protection
- Installations and testing of this fire pump system to conform to FM Standards, N.F.P.A. #13, #20, & #24 and Clark County requirements.
- Earthquake bracing to be standard per FM and N.F.P.A. #13.
- Motor, Controller & Compressor power, and wiring, to be provided by others.
- 24 hour supervision to be provided by others.
- All electrical work & painting to be by others.
- Proper size floor drain provided by others.
- Heating of pump room as required to maintain a minimum temperature of 40 degrees F provided by others.
- Fire alarm contractor to provide a separate signal to the central station for:
 - (1) Pump is running [separate signal]
 - (2) Controller main switch has been turned off or manual [separate signal]
 - (3) Trouble on the controller or engine [common troubles on separate signal]

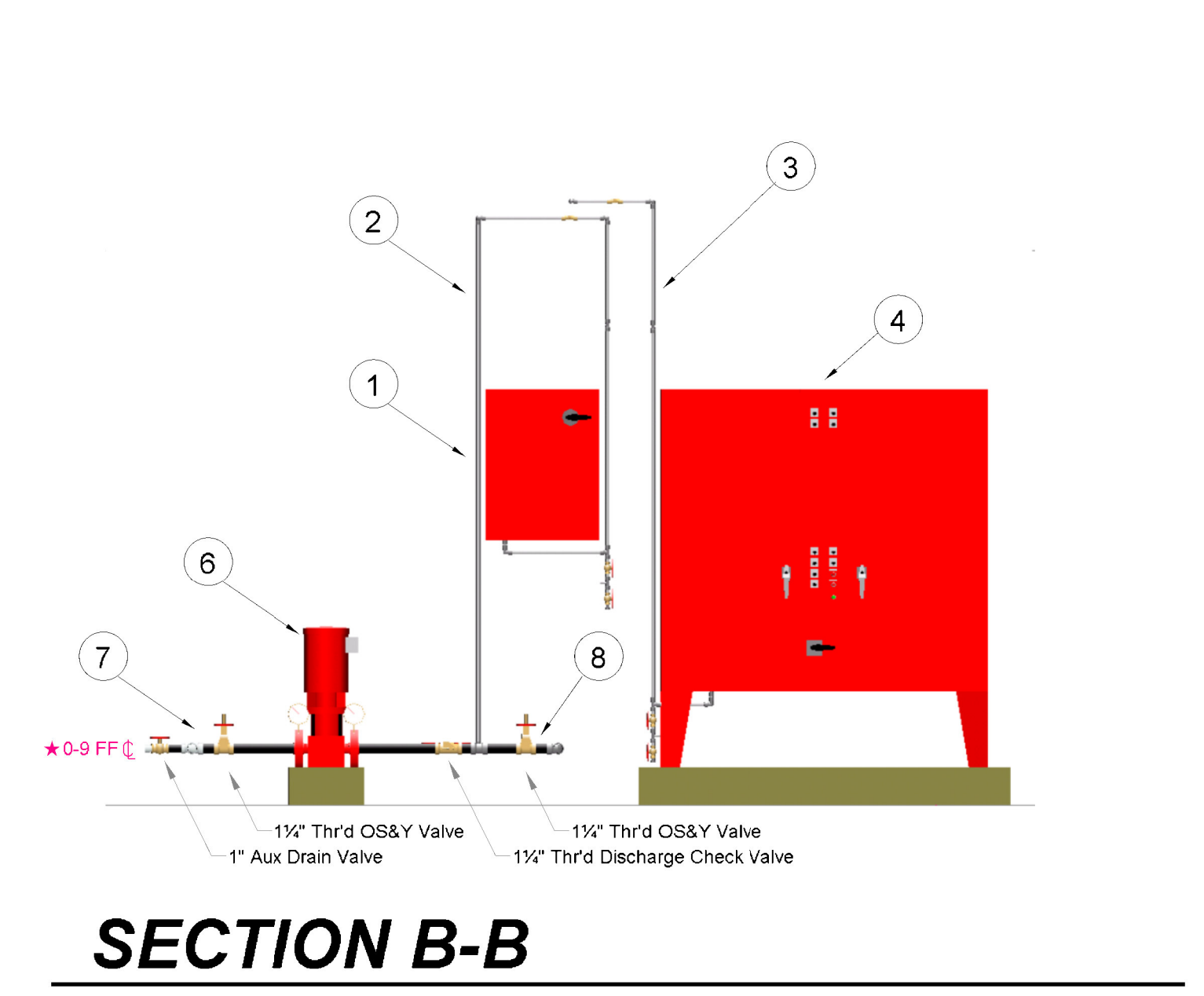
LEGEND

- FIRETROL JOCKEY PUMP CONTROLLER
 - JOCKEY PUMP 1/2" BRASS SENSING LINE
 - FIRE PUMP 1/2" BRASS SENSING LINE
 - FIRETROL FIRE PUMP CONTROLLER WITH TRANSFER SWITCH
 - 8" SUPPLY
 - GRUNDFOS CR1-12 1 1/2hp 60 hrtz 3550 RPM 3 PHASE JOCKEY PUMP
 - 1 1/2" JOCKEY PUMP SUPPLY WITH O.S. & Y.
 - 1 1/2" JOCKEY PUMP DISCHARGE WITH CHECK VALVE AND O.S. & Y.
 - PATTERSON 6x5 MMA FIRE PUMP RATED FOR 1000 GPM @ 125 PSI
 - 6" DISCHARGE
 - 6" GROOVED 90° ELBOW
 - 6" BUTTERFLY VALVE WITH TAMPER SWITCH
 - 8" O.S. & Y. VALVE WITH TAMPER SWITCH
 - 6" GROOVED CHECK VALVE
 - 6" GROOVED DISCHARGE CHECK (DRILL & TAP FOR #3)
 - 2 1/2" THREADED PRV
 - 2 1/2" THREADED BUTTERFLY VALVE WITH TAMPER
 - HOSE HEADER PIPING
 - 6" BY-PASS PIPING
 - 6" x 5" FLANGED CONCENTRIC REDUCER
 - GROOVED 45° ELL
 - BERMAD MODEL FP730-UL/FM PRESSURE RELIEF VALVE (@ 175 PSI)
 - 2 1/2" LOW FLOW BY-PASS
 - 6" FLANGED ECCENTRIC REDUCER
 - ADJUSTABLE PIPE STAND
 - 13" PUMP PAD (BY OTHERS)
 - 8" BACKFLOW PREVENTER
- 4-Way EQB Symbol
 2-Way EQB Symbol
 Hanger Symbol



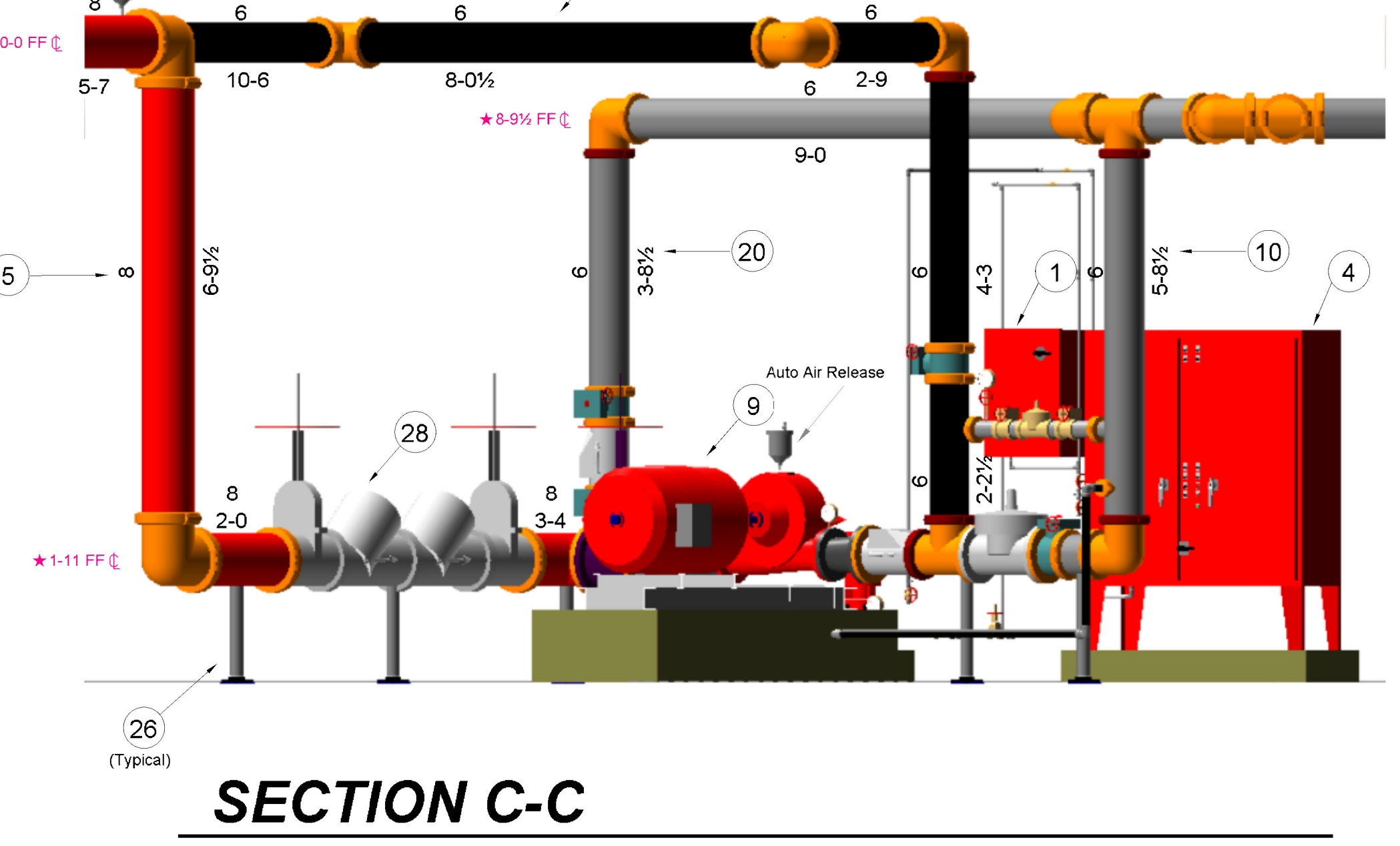
SECTION A-A

SCALE: 1/2"=1'-0"



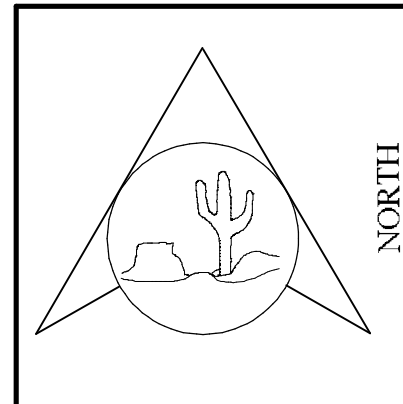
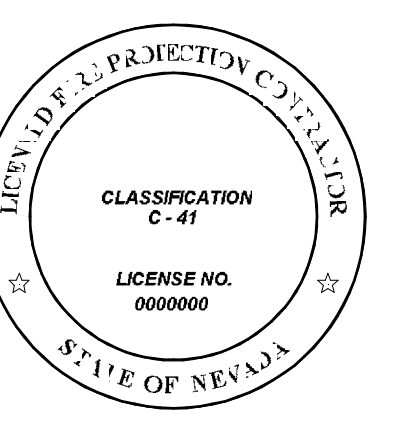
SECTION B-B

SCALE: 1/2"=1'-0"



SECTION C-C

SCALE: 1/2"=1'-0"



NO.	REVISIONS	DATE

IMPORTANT
 It is the responsibility of the Owner, General Contractor, Construction Management Agent and/or Structural Engineer of Record to ensure that the supporting structure is capable of (1) supporting the piping and related components of the fire protection system and (2) providing the necessary clearances and requirements of the relevant codes and jurisdictions.
 In locations subject to freezing conditions, it is the Owner's responsibility to ensure that the fire pump room piping is installed (40 degrees F min.).

SYMB.	MFG.	SIZE	MODEL	FINISH	TYPE	DEG. N.T.	KEFAC	QTY.

Autosprink
 Fire Sprinkler Computer Aided Design

FIRE PUMP ROOM

SAMPLE JOB
 INDUSTRIAL ROAD
 LAS VEGAS, NEVADA 89102

SCALE: 1/2"=1'-0"
 SHEET NO. **FP-11**
 TOTAL THIS SHEET: 1

JOB No. 06-0000
 DATE 7/10/2003
 DESIGNED BY JLR
 PLOTTED 01/22/08