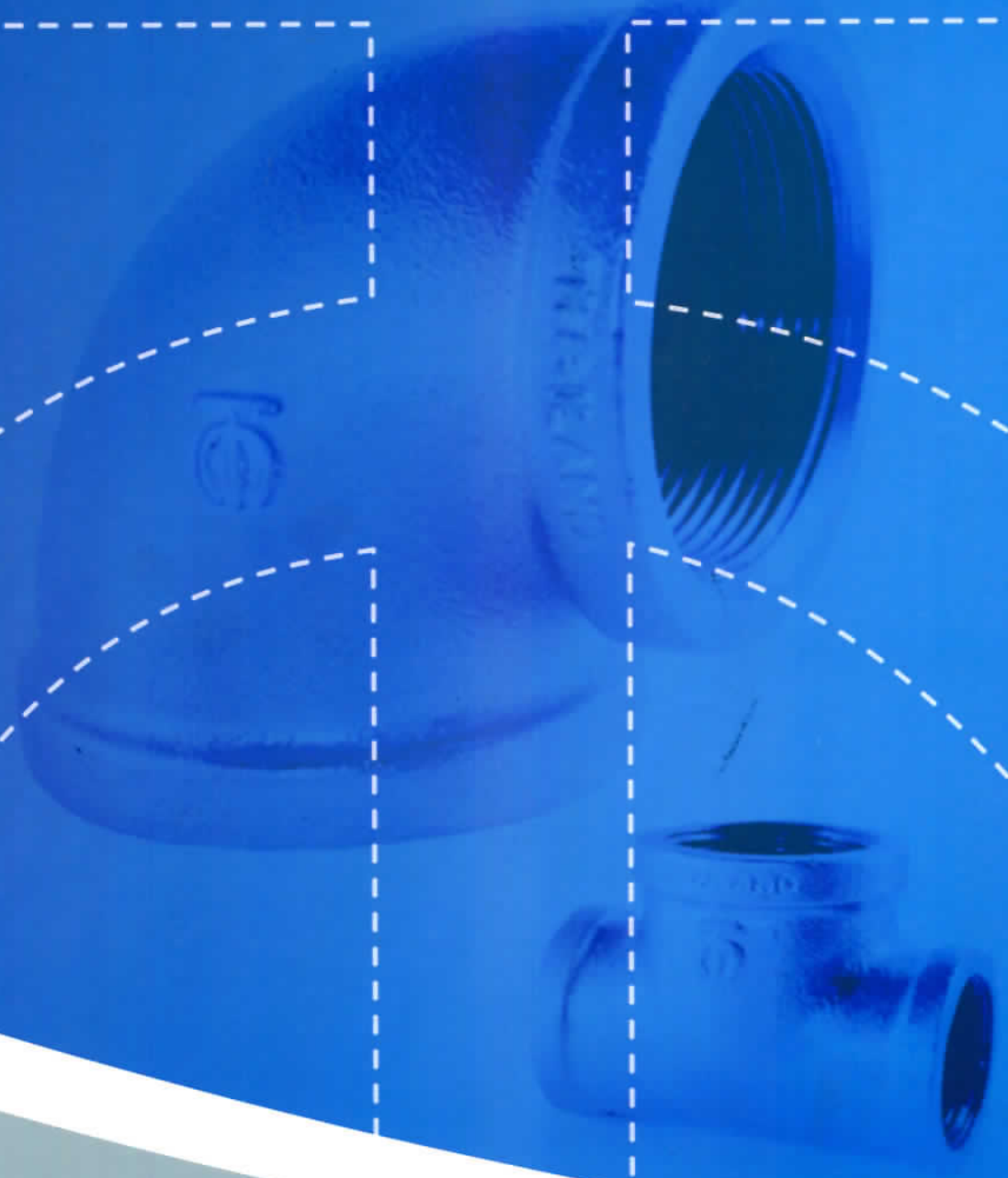




THAI MALLEABLE IRON AND STEEL CO., LTD.



HIGH GRADE PIPE FITTINGS
Proudly Serving the World



Certificates



ISO 9001:2008



หมอก.249-2540



MI 3VV7

UNION FITTING
3 SP4JAB
QMS
CM 028

062

TH - 0473
HT - DB DOA

The Thai Malleable Iron and Steel Co., Ltd. was founded in Thailand in 1967 for the aim to fill the gap on the absence in the market place of locally produced pipe fittings. The company's objective was to produce high quality products at an economical price for Thai customers.

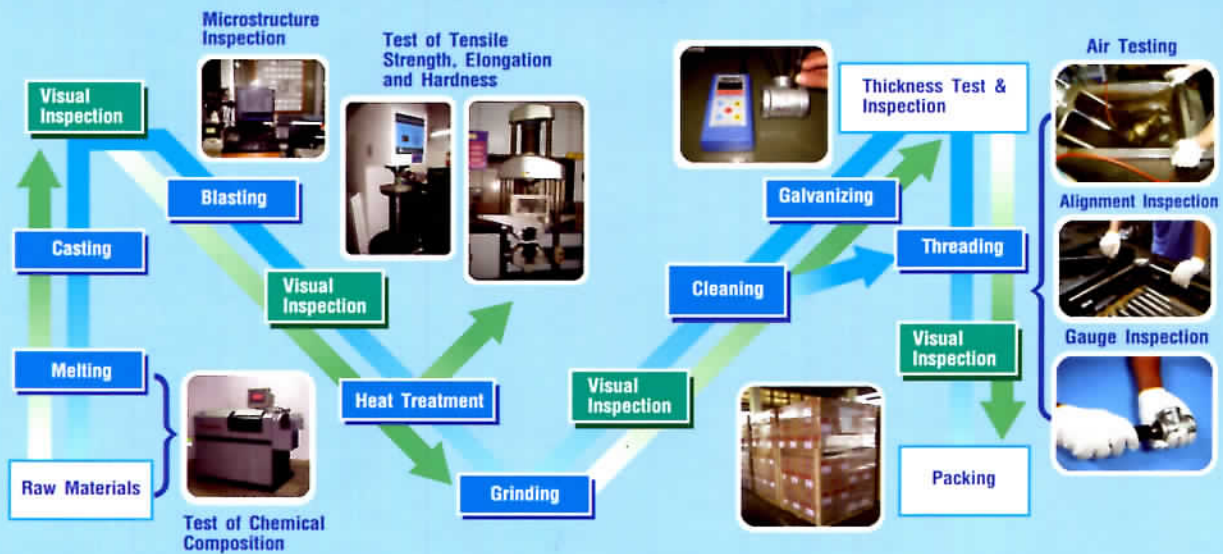
From year 1970 until now, the company not only service the needs of Thai customers but had also been exporting to the major countries of the world to satisfy the needs of international customers.

The company has now grown up to be a large and efficient organization inclusive of various companies involving in manufacturing and distributing variety of quality castings, i.e. black and galvanized malleable iron pipe fittings Classes 150 and 300, bronze pipe fittings and other castings to the OEM of customers' requirements.



FLOW CHART OF QUALITY CONTROL PLAN

INSPECTION



Production Standards

TM fittings are produced in accordance with the following national or international standards depending on customers' requirements :

American standards :

- ◎ **ASME B16.3**
Malleable Iron Threaded Fittings
Classes 150 and 300
- ◎ **ASME B16.39**
Malleable Iron Threaded Pipe Unions
Classes 150 and 300
- ◎ **ASME B16.14**
Ferrous Pipe Plugs, Bushings and Locknuts
with Pipe Threads
- ◎ **ANSI / ASME B1.20.1**
PIPE THREADS, GENERAL PURPOSE (INCH)

British standards :

- ◎ **BS 143 & 1256**
Threaded pipe fittings in malleable cast iron and cast copper alloy
- ◎ **BS 21**
Pipe threads for tubes and fittings where pressure-tight joints are made on the threads
- ◎ **BSEN 10242**
Threaded pipe fittings in malleable cast iron

ISO standards :

- ◎ **ISO 49**
Malleable cast iron fittings threaded to ISO 7-1
- ◎ **ISO 7/1**
Pipe threads where pressure - tight joints are made on the threads – Part 1 :
Dimension, tolerances and designation

European standards :

- ◎ **EN 10242**
Threaded pipe fittings in malleable cast iron
- ◎ **ISO 7/1**
Pipe threads where pressure - tight joints are made on the threads – Part 1 :
Dimensions, tolerances and designation

Japanese standards :

- ◎ **JIS B 2301**
Screwed type malleable cast iron pipe fittings
- ◎ **JIS B 0203**
Taper pipe threads

Thai standards :

- ◎ **TIS 249-2540 (มผ. 249-2540)**
Standard for Malleable cast iron threaded pipe fittings

ORDERING INFORMATION

The TM brand malleable iron pipe fittings are always ready for delivery to our customers. Please provide us the following information, when you order TM brand pipe fittings :

- Standard of fittings
- Figure number, name and nominal size
- Type of thread
- Black or galvanize
- Quantity

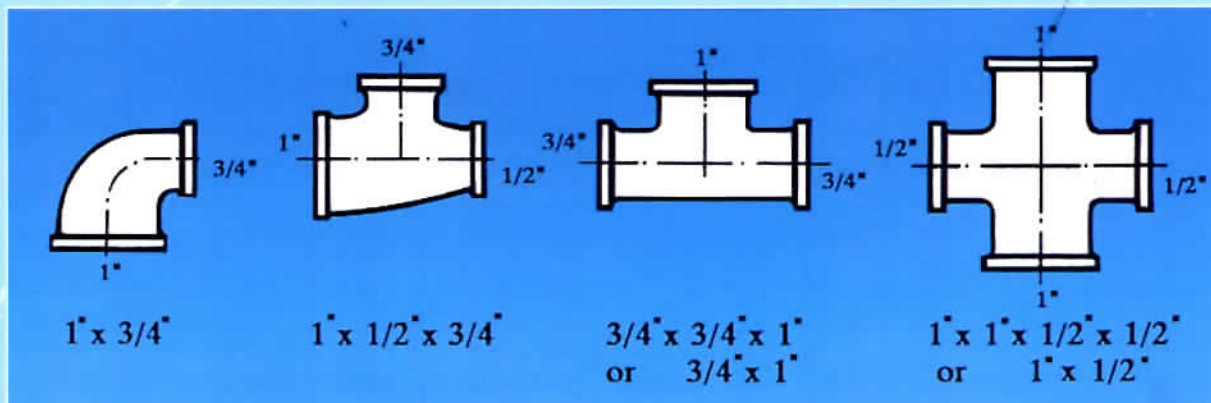


TM Malleable Iron Pipe Fittings

To avoid any confusion, the nominal size of different types of pipe fittings are designated as the following :

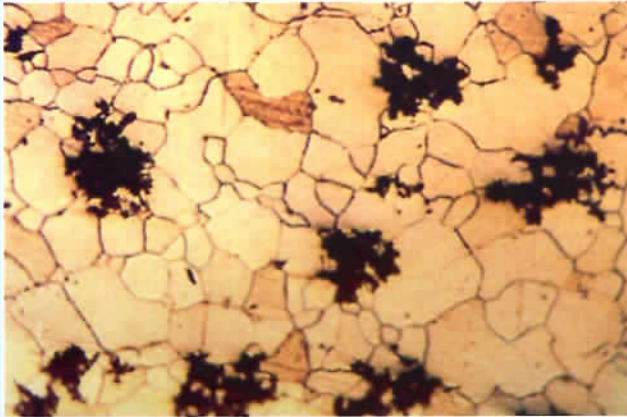
- Irrespective of the number of outlets, equal fittings (all outlets are of the same size) are referred to by that one size.
- For unequal fittings with two, three or four outlets :
 - * 2 outlets : the larger diameter comes first, and the smaller second.
 - * 3 outlets : the larger diameter of the two on the same line comes first, the smaller second and the remaining third.
 - * 4 outlets : the largest diameter comes first followed by the one on the same line, then the larger one of the remaining two and the last one fourth.

Please refer to the following figures as examples :



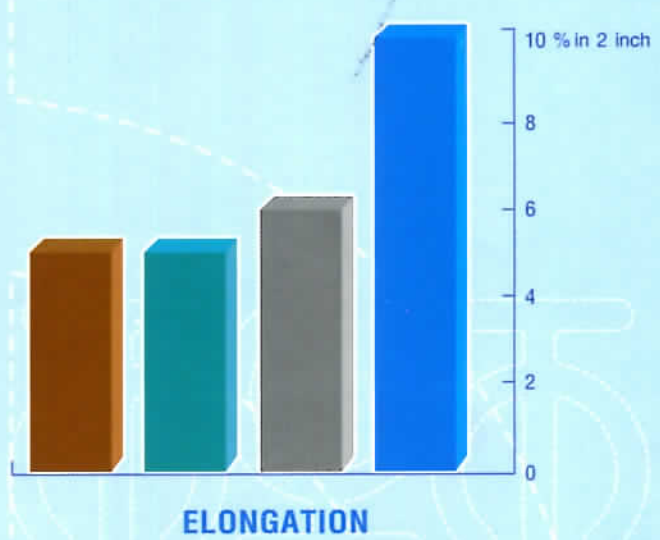
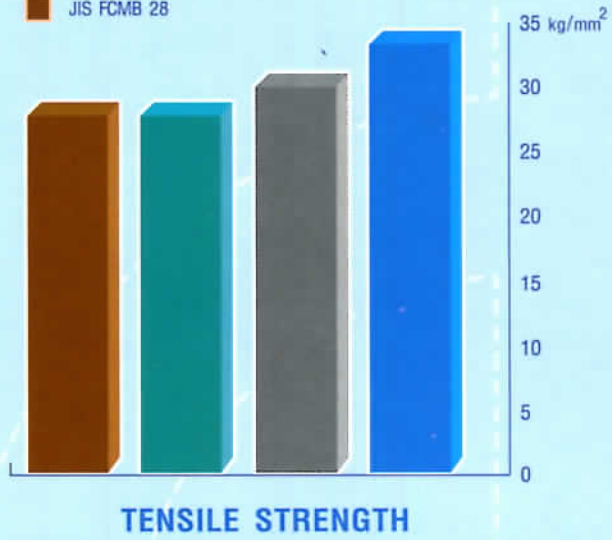
HIGH GRADE PIPE FITTINGS CLASS 150

- TM fittings are manufactured of black heart malleable iron which is melted and refined in electric induction furnaces, and annealed with extreme care.
- TM malleable iron has mechanical properties more superior than those specified by various international standards for pipe fittings (see the figures below).
- TM fittings are available either galvanize or black. Galvanized fittings have average coating thickness of 86 micrometer or average coating weight of 610 g/m² or higher
- TM fittings are suitable either to be used for steam, air, water, gas and oil pipes and for many other fluids.



Microstructure of TM Black Heart Malleable Cast Iron (x100)

Pressure / temperature ratings	
Service temperature °C	Maximum permissible working pressure bar ¹⁾
-20 to 120	25
between 120 and 300	20
¹⁾ 1 bar = 10 ⁵ N/m ² = 100 kPa = 1.02 kgf/cm ²	



BLACK / GALVANIZE MALLEABLE IRON PIPE FITTINGS CLASS 150



FIG NO. 102
Elbows. Banded.
Equal
(1/8" - 8")



FIG NO. 112
Elbows. Banded.
Reducing
(1/4" - 6")



FIG NO. 122
Elbows. 45°. Banded
(1/8" - 8")



FIG NO. 132
Street Elbows.
Banded. Equal
(1/8" - 6")



FIG NO. 142
Street Elbows.
Banded. Reducing
(1/2" - 2")



FIG NO. 152
Street Elbows.
45°. Banded
(1/8" - 6")



FIG NO. 161
Side Out Elbows.
(1/4" - 2")



FIG NO. 202
Tees. Banded.
Equal
(1/8" - 8")



FIG NO. 212-A
Tees. Banded.
Reducing on branch



FIG NO. 212-B
Tees. Banded. Red.
on run. equal on
branch



FIG NO. 212-C
Tees. Banded.
Increasing on branch



FIG NO. 212-D
Tees. Banded.
Reducing on run
and branch



FIG NO. 222
Service Tees.
Banded. Equal
(3/8" - 2")



FIG NO. 231
Side Outlet Tees
(1/2" - 2")



FIG NO. 242
45° Y-Branched.
Banded. Equal
(1/2" - 4")



FIG NO. 302
Crosses. Banded.
Equal
(1/4" - 6")



FIG NO. 312
Crosses. Banded.
Reducing
(1" - 6")



FIG NO. 402
Sockets. Banded.
with Ribs
(1/8" - 6")



FIG NO. 412
Sockets. Banded.
Reducing with Ribs
(1/4" - 8")



FIG NO. 432
Sockets. Banded.
M&F
(1/2" - 2")



FIG NO. 452
Sockets. Banded.
Reducing Eccentric
(3/4" - 2")



FIG NO. 502
Caps. Banded.
(1/8" - 8")



FIG NO. 600
Unions Gasket Type
Flat Seat
(without gasket)
(1/8" - 6")



FIG NO. 620
Unions Taper Seat.
Iron to Iron
(1/8" - 6")



FIG NO. 640
Unions Conical Joint.
Brass to Iron Seat
(1/8" - 6")



FIG NO. 703
Short Bands,
Banded
(1/2" - 2")



FIG NO. 713
Short Bands,
M&F, Banded
(1/2" - 2")



FIG NO. 722
Long Sweep Bands
Banded, 90°
(3/8" - 4")



FIG NO. 732
Long Sweep Bands
Banded, 45°
(1/2" - 3")



FIG NO. 742
Long Sweep Bands
Banded, 90° M&F
(1/8" - 6")



FIG NO. 752
Long Sweep Bands
Banded, 45° M&F
(1/2" - 4")



FIG NO. 760
Long Sweep Bands,
Male
(1/2" - 2")



FIG NO. 900
Round Flanges,
without Bolt Hole
(3/8" - 6")



FIG NO. 901
Round Flanges,
with Bolt Holes
to Table D (BS10)
(3/8" - 6")



FIG NO. 902
Round Flanges,
with Bolt Holes
to PN 16 (BS 4504)
(1/2" - 6")



FIG NO. 903
Circular Flanges,
with Bolt Holes
to PN 16 (BS 4504)
(1" - 6")



FIG NO. 904
Circular Flanges,
with Bolt Holes
to PN 25 (BS 4504)
(2" - 4")



FIG NO. 906
Floor Flanges
(1/4" - 4")



FIG NO. 906A
Economical
Floor Flanges
(3/8" - 4")



FIG NO. 907
Oval Flanges
(1/2" - 2")



FIG NO. 910
Locknuts
(1/4" - 6")



FIG NO. 920
Bushings
(1/4" - 8")



FIG NO. 921
Inside Head Bushings
(1" - 6")



FIG NO. 930
Plugs
(1/8" - 8")



FIG NO. 931
Solid Plugs
(1/8" - 6")



FIG NO. 933
Slotted Head Plugs
(3" - 8")



FIG NO. 940
Hexagon Nipples,
Equal
(1/4" - 6")



FIG NO. 941
Hexagon Nipples,
Reducing
(3/8" - 6")



FIG NO. 943
Compression Couplings,
Regular Type
(1/2" - 2")



FIG NO. 944
Compression Couplings,
Long Type
(1/2" - 2")



FIG NO. 112



FIG NO. 142



FIG NO. 312



FIG NO. 412

Nominal Size		Elbows, Banded Reducing	Street Elbows, Banded, Reducing	Crosses, Banded, Reducing	Sockets, Banded, Reducing, with Ribs
mm	inch				
8 x 6	1/4 x 1/8				●
10 x 6	3/8 x 1/8				●
10 x 8	3/8 x 1/4	●			●
15 x 6	1/2 x 1/8				●
15 x 8	1/2 x 1/4	●			●
15 x 10	1/2 x 3/8	●			●
20 x 6	3/4 x 1/8				●
20 x 8	3/4 x 1/4	●			●
20 x 10	3/4 x 3/8	●			●
20 x 15	3/4 x 1/2	●	●		●
25 x 6	1 x 1/8				
25 x 8	1 x 1/4				●
25 x 10	1 x 3/8	●			●
25 x 15	1 x 1/2	●			●
25 x 20	1 x 3/4	●	●	●	●
32 x 8	1-1/4 x 1/4				
32 x 10	1-1/4 x 3/8				
32 x 15	1-1/4 x 1/2	●		●	●
32 x 20	1-1/4 x 3/4	●		●	●
32 x 25	1-1/4 x 1	●	●	●	●
40 x 8	1-1/2 x 1/4				
40 x 10	1-1/2 x 3/8				
40 x 15	1-1/2 x 1/2	●			●
40 x 20	1-1/2 x 3/4	●		●	●
40 x 25	1-1/2 x 1	●		●	●
40 x 32	1-1/2 x 1-1/4	●		●	●
50 x 8	2 x 1/4				
50 x 10	2 x 3/8				
50 x 15	2 x 1/2	●			●
50 x 20	2 x 3/4	●		●	●
50 x 25	2 x 1	●		●	●
50 x 32	2 x 1-1/4	●		●	●
50 x 40	2 x 1-1/2	●		●	●
65 x 15	2-1/2 x 1/2				●
65 x 20	2-1/2 x 3/4	●			●
65 x 25	2-1/2 x 1	●		●	●
65 x 32	2-1/2 x 1-1/4	●		●	●



FIG NO. 112



FIG NO. 142



FIG NO. 312



FIG NO. 412

Nominal Size		Elbows, Banded Reducing	Street Elbows, Banded, Reducing	Crosses, Banded, Reducing	Sockets, Banded, Reducing, with Ribs
mm	Inch				
65 x 40	2-1/2 x 1-1/2	●		●	●
65 x 50	2-1/2 x 2	●		●	●
80 x 15	3 x 1/2				●
80 x 20	3 x 3/4	●			●
80 x 25	3 x 1			●	●
80 x 32	3 x 1-1/4	●		●	●
80 x 40	3 x 1-1/2	●		●	●
80 x 50	3 x 2	●		●	●
80 x 65	3 x 2-1/2	●		●	●
90 x 40	3-1/2 x 1-1/2				
90 x 50	3-1/2 x 2				
90 x 65	3-1/2 x 2-1/2				
90 x 80	3-1/2 x 3				
100 x 15	4 x 1/2				●
100 x 20	4 x 3/4				●
100 x 25	4 x 1			●	●
100 x 32	4 x 1-1/4			●	●
100 x 40	4 x 1-1/2			●	●
100 x 50	4 x 2	●		●	●
100 x 65	4 x 2-1/2	●		●	●
100 x 80	4 x 3	●		●	●
100 x 90	4 x 3-1/2				●
125 x 32	5 x 1-1/4				●
125 x 40	5 x 1-1/2				●
125 x 50	5 x 2				●
125 x 65	5 x 2-1/2				●
125 x 80	5 x 3				●
125 x 100	5 x 4				●
150 x 25	6 x 1				●
150 x 32	6 x 1-1/4				●
150 x 40	6 x 1-1/2				
150 x 50	6 x 2				●
150 x 65	6 x 2-1/2				●
150 x 80	6 x 3				●
150 x 100	6 x 4	●		●	●
150 x 125	6 x 5				●
200 x 150	8 x 6				●



FIG NO. 452



FIG NO. 641



FIG NO. 920



FIG NO. 941

Nominal Size		Sockets, Banded, Reducing, Eccentric	Unions, Conical Joint Brass to Iron Seat, Reducing	Bushings	Hexagon Nipples, Reducing
mm	inch				
8 x 6	1/4 x 1/8			●	
10 x 6	3/8 x 1/8				
10 x 8	3/8 x 1/4			●	●
15 x 6	1/2 x 1/8			●	
15 x 8	1/2 x 1/4			●	●
15 x 10	1/2 x 3/8			●	●
20 x 6	3/4 x 1/8			●	
20 x 8	3/4 x 1/4			●	●
20 x 10	3/4 x 3/8			●	●
20 x 15	3/4 x 1/2	●	●	●	●
25 x 6	1 x 1/8			●	
25 x 8	1 x 1/4			●	
25 x 10	1 x 3/8			●	●
25 x 15	1 x 1/2	●		●	●
25 x 20	1 x 3/4	●		●	●
32 x 8	1-1/4 x 1/4			●	
32 x 10	1-1/4 x 3/8			●	
32 x 15	1-1/4 x 1/2	●		●	●
32 x 20	1-1/4 x 3/4			●	●
32 x 25	1-1/4 x 1	●		●	●
40 x 8	1-1/2 x 1/4			●	
40 x 10	1-1/2 x 3/8			●	
40 x 15	1-1/2 x 1/2			●	●
40 x 20	1-1/2 x 3/4			●	●
40 x 25	1-1/2 x 1	●		●	●
40 x 32	1-1/2 x 1-1/4	●		●	●
50 x 8	2 x 1/4			●	
50 x 10	2 x 3/8			●	
50 x 15	2 x 1/2			●	●
50 x 20	2 x 3/4			●	●
50 x 25	2 x 1	●		●	●
50 x 32	2 x 1-1/4	●		●	●
50 x 40	2 x 1-1/2	●		●	●
65 x 15	2-1/2 x 1/2			●	
65 x 20	2-1/2 x 3/4			●	
65 x 25	2-1/2 x 1			●	●
65 x 32	2-1/2 x 1-1/4			●	



FIG NO. 452



FIG NO. 641



FIG NO. 920



FIG NO. 941

Nominal Size		Sockets, Banded, Reducing, Eccentric	Unions, Conical Joint Brass to Iron Seat, Reducing	Bushings	Hexagon Nipples, Reducing
mm	inch				
65 x 40	2-1/2 x 1-1/2			●	●
65 x 50	2-1/2 x 2			●	●
80 x 15	3 x 1/2			●	
80 x 20	3 x 3/4			●	
80 x 25	3 x 1			●	
80 x 32	3 x 1-1/4			●	
80 x 40	3 x 1-1/2			●	
80 x 50	3 x 2			●	●
80 x 65	3 x 2-1/2			●	●
90 x 40	3-1/2 x 1-1/2			●	
90 x 50	3-1/2 x 2			●	
90 x 65	3-1/2 x 2-1/2			●	
90 x 80	3-1/2 x 3			●	
100 x 15	4 x 1/2				
100 x 20	4 x 3/4			●	
100 x 25	4 x 1			●	
100 x 32	4 x 1-1/4			●	
100 x 40	4 x 1-1/2			●	
100 x 50	4 x 2			●	●
100 x 65	4 x 2-1/2			●	●
100 x 80	4 x 3			●	●
100 x 90	4 x 3-1/2			●	
125 x 32	5 x 1-1/4				
125 x 40	5 x 1-1/2				
125 x 50	5 x 2			●	
125 x 65	5 x 2-1/2			●	
125 x 80	5 x 3			●	
125 x 100	5 x 4			●	
150 x 25	6 x 1				
150 x 32	6 x 1-1/4				
150 x 40	6 x 1-1/2			●	
150 x 50	6 x 2			●	
150 x 65	6 x 2-1/2			●	
150 x 80	6 x 3			●	
150 x 100	6 x 4			●	
150 x 125	6 x 5			●	
200 x 150	8 x 6			●	

FIG NO. 212 Tees, Banded, Reducing



A

FIG NO. 212A Tees, Banded, Reducing on branch

Nominal Size	
mm	Inch
10 x 8	3/8 x 1/4
15 x 8	1/2 x 1/4
15 x 10	1/2 x 3/8
20 x 8	3/4 x 1/4
20 x 10	3/4 x 3/8
20 x 15	3/4 x 1/2
25 x 8	1 x 1/4
25 x 10	1 x 3/8
25 x 15	1 x 1/2
25 x 20	1 x 3/4
32 x 10	1-1/4 x 3/8
32 x 15	1-1/4 x 1/2
32 x 20	1-1/4 x 3/4
32 x 25	1-1/4 x 1
40 x 10	1-1/2 x 3/8
40 x 15	1-1/2 x 1/2
40 x 20	1-1/2 x 3/4
40 x 25	1-1/2 x 1
40 x 32	1-1/2 x 1-1/4
50 x 10	2 x 3/8
50 x 15	2 x 1/2
50 x 20	2 x 3/4
50 x 25	2 x 1
50 x 32	2 x 1-1/4
50 x 40	2 x 1-1/2
65 x 15	2-1/2 x 1/2
65 x 20	2-1/2 x 3/4
65 x 25	2-1/2 x 1
65 x 32	2-1/2 x 1-1/4
65 x 40	2-1/2 x 1-1/2
65 x 50	2-1/2 x 2
80 x 15	3 x 1/2
80 x 20	3 x 3/4
80 x 25	3 x 1
80 x 32	3 x 1-1/4
80 x 40	3 x 1-1/2
80 x 50	3 x 2
80 x 65	3 x 2-1/2
100 x 15	4 x 1/2
100 x 20	4 x 3/4
100 x 25	4 x 1
100 x 32	4 x 1-1/4
100 x 40	4 x 1-1/2
100 x 50	4 x 2
100 x 65	4 x 2-1/2
100 x 80	4 x 3
125 x 50	5 x 2
125 x 65	5 x 2-1/2
125 x 80	5 x 3
125 x 100	5 x 4
150 x 32	6 x 1-1/4
150 x 40	6 x 1-1/2
150 x 50	6 x 2
150 x 65	6 x 2-1/2
150 x 80	6 x 3
150 x 100	6 x 4
150 x 125	6 x 5



B FIG NO. 212B Tees, Banded, Red on run, equal on branch

Nominal Size	
mm	inch
20 x 15 x 20	3/4 x 1/2 x 3/4
25 x 15 x 25	1 x 1/2 x 1
25 x 20 x 25	1 x 3/4 x 1
32 x 15 x 32	1-1/4 x 1/2 x 1-1/4
32 x 20 x 32	1-1/4 x 3/4 x 1-1/4
32 x 25 x 32	1-1/4 x 1 x 1-1/4
40 x 15 x 40	1-1/2 x 1/2 x 1-1/2
40 x 20 x 40	1-1/2 x 3/4 x 1-1/2
40 x 25 x 40	1-1/2 x 1 x 1-1/2
40 x 32 x 40	1-1/2 x 1-1/4 x 1-1/2
50 x 15 x 50	2 x 1/2 x 2
50 x 20 x 50	2 x 3/4 x 2
50 x 25 x 50	2 x 1 x 2
50 x 32 x 50	2 x 1-1/4 x 2
50 x 40 x 50	2 x 1-1/2 x 2
65 x 40 x 65	2-1/2 x 1-1/2 x 2-1/2
65 x 50 x 65	2-1/2 x 2 x 2-1/2
80 x 50 x 80	3 x 2 x 3



C FIG NO. 212C Tees, Banded, Increasing on branch

Nominal Size	
mm	inch
15 x 15 x 20	1/2 x 1/2 x 3/4
15 x 15 x 25	1/2 x 1/2 x 1
20 x 15 x 25	3/4 x 1/2 x 1
20 x 20 x 25	3/4 x 3/4 x 1
20 x 20 x 32	3/4 x 3/4 x 1-1/4
25 x 25 x 32	1 x 1 x 1-1/4
25 x 25 x 40	1 x 1 x 1-1/2
25 x 25 x 50	1 x 1 x 2
25 x 40 x 50	1 x 1-1/2 x 2
32 x 25 x 40	1-1/4 x 1 x 1-1/2
32 x 32 x 40	1-1/4 x 1-1/4 x 1-1/2
32 x 32 x 50	1-1/4 x 1-1/4 x 2
32 x 32 x 65	1-1/4 x 1-1/4 x 2-1/2
32 x 50 x 65	1-1/4 x 2 x 2-1/2
40 x 40 x 50	1-1/2 x 1-1/2 x 2
50 x 50 x 65	2 x 2 x 2-1/2
50 x 50 x 80	2 x 2 x 3
65 x 65 x 80	2-1/2 x 2-1/2 x 3
80 x 80 x 100	3 x 3 x 4
100 x 100 x 150	4 x 4 x 6



D FIG NO. 212D Tees, Banded, Reducing on run and branch

Nominal Size	
mm	inch
20 x 15 x 15	3/4 x 1/2 x 1/2
25 x 15 x 15	1 x 1/2 x 1/2
25 x 15 x 20	1 x 1/2 x 3/4
25 x 20 x 15	1 x 3/4 x 1/2
25 x 20 x 20	1 x 3/4 x 3/4
32 x 15 x 15	1-1/4 x 1/2 x 1/2
32 x 15 x 20	1-1/4 x 1/2 x 3/4
32 x 15 x 25	1-1/4 x 1/2 x 1
32 x 20 x 15	1-1/4 x 3/4 x 1/2
32 x 20 x 20	1-1/4 x 3/4 x 3/4
32 x 20 x 25	1-1/4 x 3/4 x 1
32 x 25 x 15	1-1/4 x 1 x 1/2
32 x 25 x 20	1-1/4 x 1 x 3/4
32 x 25 x 25	1-1/4 x 1 x 1
40 x 15 x 32	1-1/2 x 1/2 x 1-1/4
40 x 20 x 15	1-1/2 x 3/4 x 1/2
40 x 20 x 20	1-1/2 x 3/4 x 3/4
40 x 20 x 32	1-1/2 x 3/4 x 1-1/4
40 x 25 x 15	1-1/2 x 1 x 1/2
40 x 25 x 20	1-1/2 x 1 x 3/4
40 x 25 x 25	1-1/2 x 1 x 1
40 x 25 x 32	1-1/2 x 1 x 1-1/4
40 x 32 x 15	1-1/2 x 1-1/4 x 1/2
40 x 32 x 20	1-1/2 x 1-1/4 x 3/4
40 x 32 x 25	1-1/2 x 1-1/4 x 1
40 x 32 x 32	1-1/2 x 1-1/4 x 1-1/4
50 x 20 x 20	2 x 3/4 x 3/4
50 x 25 x 25	2 x 1 x 1
50 x 25 x 32	2 x 1 x 1-1/4
50 x 32 x 25	2 x 1-1/4 x 1
50 x 32 x 32	2 x 1-1/4 x 1-1/4
50 x 32 x 40	2 x 1-1/4 x 1-1/2
50 x 40 x 15	2 x 1-1/2 x 1/2
50 x 40 x 20	2 x 1-1/2 x 3/4
50 x 40 x 25	2 x 1-1/2 x 1
50 x 40 x 32	2 x 1-1/2 x 1-1/4
50 x 40 x 40	2 x 1-1/2 x 1-1/2
65 x 40 x 40	2-1/2 x 1-1/2 x 1-1/2
65 x 40 x 50	2-1/2 x 1-1/2 x 2
65 x 50 x 32	2-1/2 x 2 x 1-1/4
65 x 50 x 50	2-1/2 x 2 x 2

BLACK / GALVANIZE
 MALLEABLE IRON PIPE FITTINGS CLASS 300

Class 300



FIG NO. 102XH
 Elbows, Banded,
 Equal
 (1/4" - 4")



FIG NO. 122XH
 Elbows, Banded,
 45°
 (1/4" - 4")



FIG NO. 132XH
 Street Elbows,
 Banded, Equal
 (1/4" - 4")



FIG NO. 202XH
 Tees, Banded,
 Equal
 (1/4" - 4")



FIG NO. 212XH
 Tees, Banded,
 Reducing
 (3/4" - 3")



FIG NO. 402XH
 Sockets, Banded,
 with Ribs
 (1/4" - 4")



FIG NO. 412XH
 Sockets, Banded,
 Reducing, with Ribs
 (1/2" - 4")



FIG NO. 502XH
 Caps, Banded
 (3/8" - 4")



FIG NO. 640XH
 Unions, Conical Joint,
 Brass to Iron Seat
 (1/4"-4")

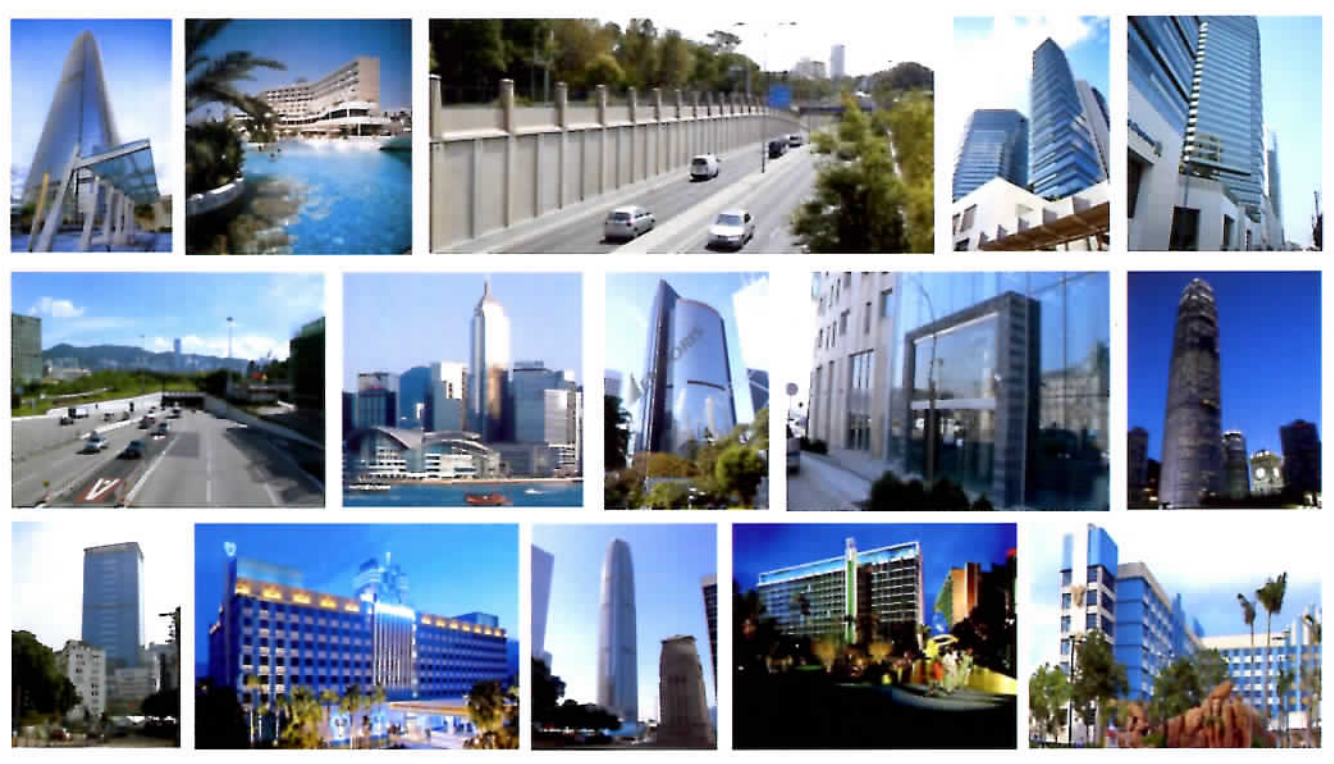


Reference Projects

Domestic Projects



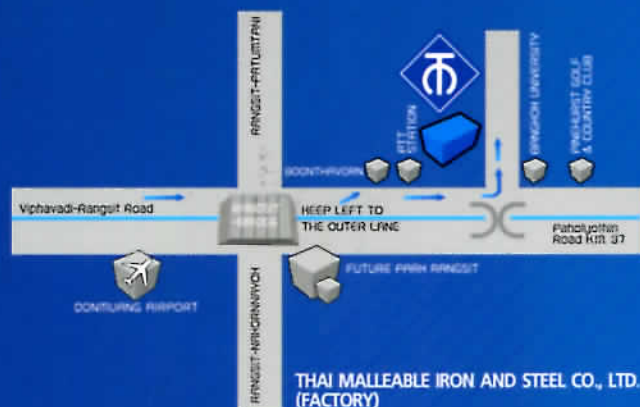
Overseas Projects



THAI MALLEABLE IRON AND STEEL CO., LTD.



HIGH GRADE PIPE FITTINGS



THAI MALLEABLE IRON AND STEEL CO., LTD.

Head Office :

1139/6-7 Rama 3 Road, Chongnonsee, Yannawa, Bangkok 10120, Thailand

Tel : (662)285-3086-7, 285-3089 Fax : (662)285-3084

Email : tmisco@thaimalleable.co.th

Factory :

27/4 Moo 5 Paholyothin Road, Klong No.1, Klong-Luang, Patumtani 12120, Thailand

Tel : (662)516-1800-4 Fax : (662)516-8397

Email : tmfac@thaimalleable.co.th, tmexp@thaimalleable.co.th (Sale)

www.thaimalleable.com