

NOTES:

- ALL DIMENSIONS ARE IN MILLIMETERS AND ELEVATIONS IN METERS UNLESS OTHERWISE SHOWN.
- ALL PIPE SIZE SHOWN ARE NOMINAL PIPE DIAMETER IN MILLIMETERS.
- THIS DRAWING MUST BE READ IN CONJUNCTION WITH THE APPROVED STRUCTURAL AND ARCHITECTURAL DRAWINGS.
- ALL SLEEVES SHALL BE PACK BY FIRE RATED SEALANT.
- ELEVATION OF ALL PIPES ARE GIVEN IN FINISH FLOOR LEVEL.
- FOR POTABLE AND FIRE WATER TANK PIPING LAYOUT REFER TO DWG. NO. PB59-HC1-CCE-PB-001

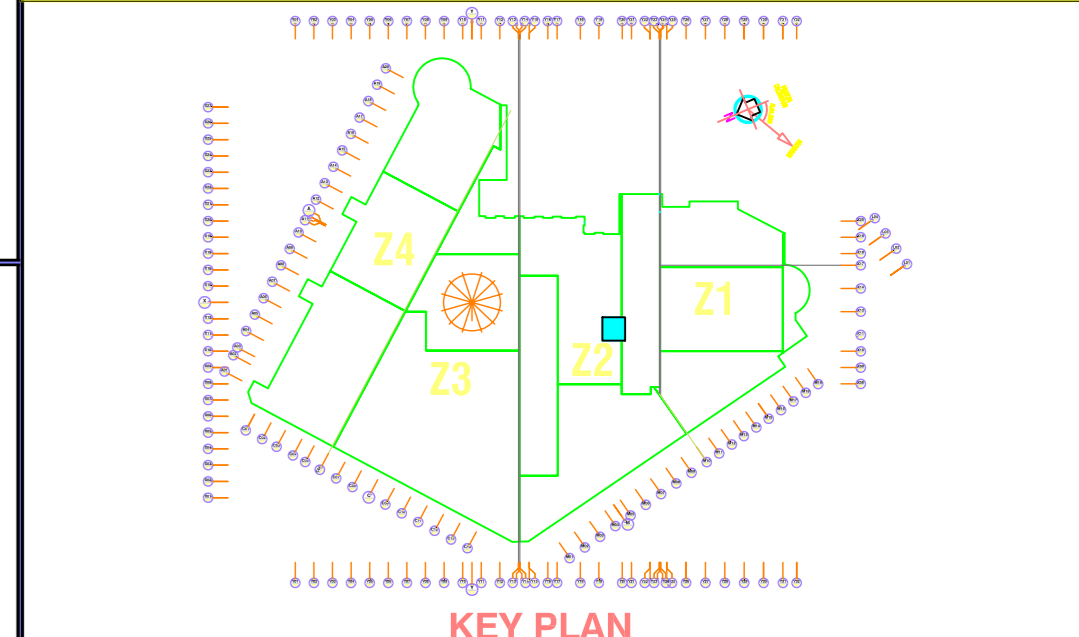
ABBREVIATIONS:

B.O.P	BOTTOM OF PIPE	SPDR	SEWER PIPE DRAINAGE RISER
BF	FLANGE	SPDL	SEWER PIPE DRAINAGE LINE
CLG	CLEANOUT	TYP	TYPICAL
CO	CLEANOUT	ULB	UNDER GROUND
DV	CHECK VALVE	VS	VENT STACK
DP	DRAIN PIPE	VPT	VENT PIPE
EL	ELEVATION	W	WALL
FWL	FIRE WATER	Ø	DIAMETER
FC	FLEXIBLE CONNECTOR	∅	AND
GV	GATE VALVE	∅	AT
IE	INVERT ELEVATION	↔	FLOOR DIRECTION
PG	PRESSURE GAUGE	↑	TO ABOVE
PRV	PRESSURE RELIEF VALVE	↓	TO BELOW
PS	PRESSURE SWITCH	↔	FROM BELOW
PW	POTABLE WATER	↔	FROM ABOVE

ACCESSORIES AND FITTINGS

ITEM NO.	DESCRIPTION
01	FIRE PUMP (ELECTRICAL DRIVEN)
02	FIRE PUMP (DIESEL DRIVEN)
03	JOCKEY PUMP
04	PACKAGE TYPE WATER PUMP
05	GATE VALVE
06	CHECK VALVE
07	OS & Y GATE VALVE w/ SUPERSEDRARY SWITCH
08	PRESSURE RELIEF VALVE
09	PRESSURE GAUGE
10	FLOOR WATER
11	45° ELBOW
12	90° ELBOW
13	STRAIGHT TEE
14	REDUCING TEE
15	STRAINER
16	PIPE SLEEVE
17	FLEXIBLE CONNECTION OR JOINT
18	REDUCER
19	FLANGE BUNNY SLIP-ON LAP JOINT
20	BUTTERFLY VALVE (ELDER OPERATED)
21	CARBONIDE FILTER
22	HEAT EXCHANGER
23	CONTROL PANEL FOR JOCKEY PUMP
24	CONTROL PANEL FOR DIESEL DRIVEN FIRE PUMP
25	CONTROL PANEL FOR ELECTRICAL DRIVEN FIRE PUMP
26	CONTROL PANEL FOR PACKAGE WATER PUMP
27	PIPE SUPPORT
28	DIESEL ENGINE MUFFLER
29	ALARM CHECK VALVE w/ REFUGIO CHAMBER
30	300x1500mm TRENCH PIT w/ GRATING COVER

NOTE: ALL EQUIPMENTS, PIPES, ACCESSORIES AND FITTINGS SHALL BE AS PER REQUIRED SIZE, SPECIFICATIONS, AND APPROVED MATERIAL SUBMITTAL.



REFERENCE DRAWINGS

REFERENCE DRAWING NO.	DRAWING DESCRIPTION
301FP201	3RD BASEMENT FIRE PROTECTION PLAN
301S101	3RD BASEMENT FOUNDATION PLAN
301P101	3RD BASEMENT FLOOR PLUMBING PLAN

Rev. No.	Date	Description of Changes	Draw	Chkd.	Appr.
00	06/07/2010	ISSUED FOR APPROVAL			

INFORMATION TECHNOLOGY AND COMMUNICATION COMPLEX CONVENTION HOTEL, PACKAGE-II RIYADH - KINGDOM OF SAUDI ARABIA

CLIENT
Rayadah Investment Company
 Post Box: 56850, Riyadh: 11564
 Tel: 01-2059911, Fax: 01-2059922
 E-mail: info@raid.com.sa

PROJECT MANAGER
HanmiParsons Co.Ltd.
 9th Fl. City Air Tower Bldg.
 150-9, Samsung-dong, Kangnam-gu
 Seoul Korea 135-873
 Tel: 822-3429-6352
 Fax: 822-3429-6363/4
 WWW: hanmiparsons.com

DESIGN/CONSULTANT
CCCE
 CONTRACTING & CONSTRUCTION ENTERPRISES LTD.
 P.O.Box: 250991
 Riyadh: 11591
 Kingdom of Saudi Arabia
 Tel:(01) 416-1122, 464-2991, Fax:(01) 416-1986,
 Email: ccce@saudi.com

MAIN CONTRACTOR
CONTRACTING & CONSTRUCTION ENTERPRISES LTD.
 P.O.Box: 250991
 Riyadh: 11591
 Kingdom of Saudi Arabia
 Tel:(01) 416-1122, 464-2991, Fax:(01) 416-1986,
 Email: ccce@saudi.com

DRAWING TITLE
POTABLE AND FIRE WATER PUMP ROOM PIPING AND EQUIPMENT SECTION AND DETAIL 3RD BASEMENT PARTIAL PLAN

Drawing Type	Drawing No.	Sh. No.	Rev. No.
PLUMBING	PB59-HC1-CCE-PB-002-02	2	00

Scale	Drawn By	Signature	Checked By	Signature
AS SHOWN	K.R.		K.H.	

Drawing Status	Issued For	Date
SHOP DRAWING	APPROVAL	06/07/2010