

Biology (class IX)  
Chapter - 1 (The fundamental unit of life)  
(Important Question)

1) Observe the diagram of the cell and answer the following:

a) Label the parts of the cell

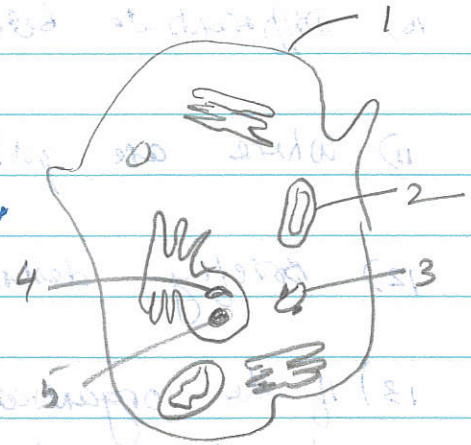
b) What function does part 1 perform

c) If the organelle 2 is removed from the cell, what effect is it

going to make on the function of the cell?

d) Identify whether it is plant cell or animal cell.

e) Which structure is called 'power house of the cell'?



2) Differentiate between plant cell and animal cell.

3) There would be no plant life if chloroplasts did not exist. Justify.

4) What would happen if the plasma membrane ruptured or broke down?

5) What is cytosol and cytoskeleton?

6) Difference between diffusion and osmosis. What is its importance?

7) Name the cell organelle found in plant cells only. Write its type and function.

8) Draw a labelled diagram of mitochondria. Write the function of mitochondria.

9) How do you know that nucleus is very small as compared to the size of cell?



10) Differentiate between active and passive transport.

11) Where are proteins synthesised inside the cell?

12) Briefly describe three important parts of cell.

13) If the organisation of a cell is destroyed due to some physical or chemical influence, what will happen?

14) What would happen to the life of cell if there was no Golgi apparatus?

15) What is cell sap? Give its composition.

16) Name two cell organelles that have their own genetic material.

17) Who proposed cell theory? What it states? What modification Virchow made in it?

18) What is meant by osmosis? What happens to a cell when it is placed in hypotonic and hypertonic solution respectively? State two points of difference between osmosis and diffusion.

19) Why are lysosomes known as suicidal bags?

20) Which organelle is known as the power house of cell? Why?

21) How does an Amoeba obtain its food?

22) Where do the lipids and proteins constituting the cell membrane get synthesised?