



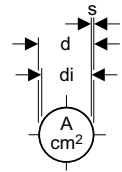
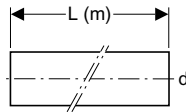
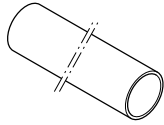
Geberit HDPE

Waste and drainage system

	Description	
Geberit Pipes		→ Page 4
Geberit Fittings	Reducers	→ Page 5
	Bends	→ Page 6
	Sovent	→ Page 8
	Branch and ball fittings	→ Page 8
	Access pipes	→ Page 14
	Electrofusion	→ Page 15
	Sockets	→ Page 16
	Ends	→ Page 17
	Air admittance valves	→ Page 20
	Flanges	→ Page 21
	Connections	→ Page 22
	Sealings for wall and ceilings	→ Page 29
	Fire protection sleeve	→ Page 30
	Adapters for different pipe materials	→ Page 31
	Funnel	→ Page 28
Geberit Conventional roof drainage		→ Page 34
Geberit Fastenings		→ Page 36

HDPE Pipes

Geberit HDPE straight lined pipe



Application Purpose

- For all drainage pipes

Characteristics

- Tempered according to Geberit standard
- UV-resistant

Product Details

Product material	HDPE
------------------	------

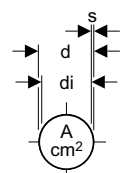
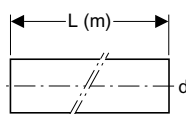
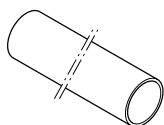
Scope Of Delivery

- Delivery in sections

Ordering Information

Article no.	dØ [mm]	diØ [mm]	s [mm]	A [cm²]	L (m) [m]
379.000.16.0	32	26	3	5,3	5
360.000.16.0	40	34	3	9	5
361.000.16.0	50	44	3	15,2	5
363.000.16.0	56	50	3	19,6	5
364.000.16.0	63	57	3	25,4	5
365.000.16.0	75	69	3	37,3	5
366.000.16.0	90	83	3,5	54,1	5
367.000.16.0	110	101,4	4,3	80,7	5
368.000.16.0	125	115,2	4,9	104,5	5
369.000.16.0	160	147,6	6,2	171,1	5
370.000.16.0	200	187,6	6,2	276,4	5
371.000.16.0	250	234,4	7,8	431,5	5
372.000.16.0	315	295,4	9,8	685,3	5

Geberit HDPE straight lined pipe PN4



Application Purpose

- For all drainage pipes
- For drainage pipes with increased negative pressure

Characteristics

- Tempered according to Geberit standard
- UV-resistant

Product Details

Product material	HDPE
------------------	------

Scope Of Delivery

- Delivery in sections

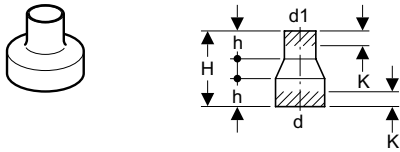
Ordering Information

Article no.	dØ [mm]	diØ [mm]	s [mm]	A [cm²]	L (m) [m]
370.050.16.0	200	184,6	7,7	268,4	5
371.050.16.0	250	230,6	9,7	418,2	5
372.050.16.0	315	290,6	12,2	663,8	5



HDPE Reducers

Geberit HDPE concentric reducer, short



Application Purpose

- For all drainage pipes

Characteristics

- UV-resistant
- Concentric

Product Details

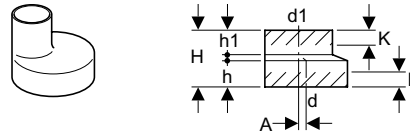
Product material	HDPE
------------------	------

Ordering Information

Article no.	dØ [mm]	d1Ø [mm]	H [cm]	h [cm]	K* [cm]
360.557.16.1	40	32	8	3	1,5
361.557.16.1	50	32	8	3	1,5
361.559.16.1	50	40	8	3	1,5
363.559.16.1	56	40	8	3	1,5
363.510.16.1	56	48	4	–	–
363.560.16.1	56	50	8	3	1,5
364.559.16.1	63	40	8	3	1,5
364.560.16.1	63	50	8	3	1,5
364.565.16.1	63	56	8	3	1,5
365.559.16.1	75	40	8	3	1,5
365.560.16.1	75	50	8	3	1,5
365.565.16.1	75	56	8	3	1,5
365.570.16.1	75	63	8	3	1,5
366.559.16.1	90	40	8	3	1,5
366.560.16.1	90	50	8	3	1,5
366.565.16.1	90	56	8	3	1,5
366.570.16.1	90	63	8	3	1,5
366.575.16.1	90	75	8	3	1,5
367.559.16.1	110	40	8	3	1,5
367.560.16.1	110	50	8	3	1,5
367.565.16.1	110	56	8	3	1,5
367.570.16.1	110	63	8	3	1,5
367.575.16.1	110	75	8	3	1,5
367.580.16.1	110	90	8	3	1,5
368.570.16.1	125	63	8	3	1,5
368.575.16.1	125	75	8	3	1,5
368.580.16.1	125	90	8	3	1,5
368.585.16.1	125	110	8	3	1,5
369.535.16.1	160	110	4	0,6	–

* K indicates the maximum shortening length

Geberit HDPE eccentric reducer, short



Application Purpose

- For all drainage pipes

Characteristics

- UV-resistant
- Eccentric

Product Details

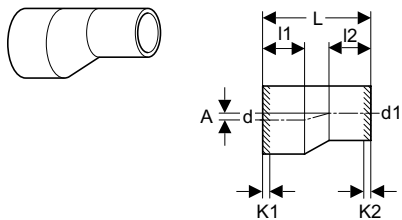
Product material	HDPE
------------------	------

Ordering Information

Article no.	dØ [mm]	d1Ø [mm]	A [cm]	H [cm]	h [cm]	h1 [cm]	K* [cm]
361.558.16.1	50	40	0,5	8	3,7	3,5	2
363.558.16.1	56	40	0,8	8	3,7	3,5	2
363.561.16.1	56	50	0,3	8	3,7	3,5	2
364.558.16.1	63	40	1,15	8	3,7	3,5	2
364.561.16.1	63	50	0,65	8	3,7	3,5	2
364.566.16.1	63	56	0,35	8	3,7	3,5	2
365.558.16.1	75	40	1,75	8	3,7	3,5	2
365.561.16.1	75	50	1,25	8	3,7	3,5	2
365.566.16.1	75	56	0,95	8	3,7	3,5	2
365.571.16.1	75	63	0,6	8	3,7	3,5	2
366.561.16.1	90	50	2	8	3,7	3,5	2
366.566.16.1	90	56	1,7	8	3,7	3,5	2
366.571.16.1	90	63	1,3	8	3,7	3,5	2
366.576.16.1	90	75	0,75	8	3,7	3,5	2
367.558.16.1	110	40	3,4	8	3,7	3,5	2
367.561.16.1	110	50	2,9	8	3,7	3,5	2
367.566.16.1	110	56	2,6	8	3,7	3,5	2
367.571.16.1	110	63	2,2	8	3,7	3,5	2
367.576.16.1	110	75	1,6	8	3,7	3,5	2
367.581.16.1	110	90	0,9	8	3,7	3,5	2
368.561.16.1	125	50	3,6	8	3,7	3,5	2
368.566.16.1	125	56	3,3	8	3,7	3,5	2
368.571.16.1	125	63	2,9	8	3,7	3,5	2
368.576.16.1	125	75	2,3	8	3,7	3,5	2
368.581.16.1	125	90	1,6	8	3,7	3,5	2
368.586.16.1	125	110	0,7	8	3,7	3,5	2
369.586.16.1	160	110	2,3	8	3,5	3,7	2
369.588.16.1	160	125	1,6	8	3,5	3,7	2
369.591.16.1	160	140	1	8	3,5	3,7	2

* K indicates the maximum shortening length

Geberit HDPE eccentric reducer, long



Application Purpose

- For all drainage pipes

Characteristics

- UV-resistant
- Eccentric

Product Details

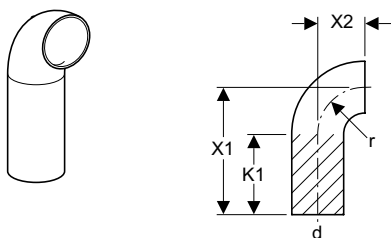
Product material	HDPE
------------------	------

Ordering Information

Article no.	dØ [mm]	d1Ø [mm]	A [cm]	L [cm]	l1 [cm]	l2 [cm]	K1 [cm]	K2 [cm]
368.584.16.1	125	110	0,7	16	7	6,4	4	3
369.584.16.1	160	110	2,5	28	9,4	6,4	6	3
369.587.16.1	160	125	1,7	24	9,4	8	6	5
370.584.16.5	200	110	4,3	28	11,5	3,7	4	0
370.587.16.5	200	125	3,6	28	11,5	3,7	4	0
370.594.16.5	200	160	2	28	11,9	9,1	4	6
371.596.16.1	250	200	2,5	40,5	15,8	15,7	8	8
372.596.16.1	315	200	5,7	58	16,1	15,7	8	8
372.598.16.1	315	250	3,2	43,5	16,1	15,7	8	8

HDPE Bends

Geberit HDPE bend 90° long



Application Purpose

- For all drainage pipes

Characteristics

- UV-resistant

Product Details

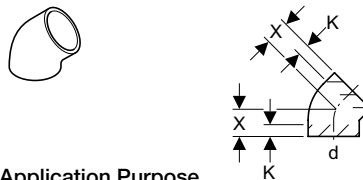
Product material	HDPE
------------------	------

Ordering Information

Article no.	dØ [mm]	X1 [cm]	X2 [cm]	K1 [cm]	r [cm]
379.055.16.1	32	10	3	7	3
360.055.16.1	40	15	3	12	3
361.055.16.1	50	18	4	14	4
363.055.16.1	56	21	4	17	4
364.055.16.1	63	21	5	16	5
365.055.16.1	75	21	7	14	7

Article no.	dØ [mm]	X1 [cm]	X2 [cm]	K1 [cm]	r [cm]
366.055.16.1	90	24	9	15	9
367.055.16.1	110	27	10	17	10
368.055.16.1	125	20	11	9	11
369.055.16.1	160	20	14,5	6	14

Geberit HDPE bend 45°



Application Purpose

- For all drainage pipes

Characteristics

- UV-resistant

Product Details

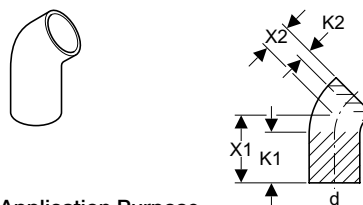
Product material	HDPE
------------------	------

Ordering Information

Article no.	dØ [mm]	X [cm]	K* [cm]
360.045.16.1	40	4	2
361.045.16.1	50	4,5	2
363.045.16.1	56	4,5	2
364.045.16.1	63	5	2
365.045.16.1	75	5	2
366.045.16.1	90	5,5	2
367.045.16.1	110	6	2,5
368.045.16.1	125	6,5	2,5
369.045.16.1	160	6,9	2

* K indicates the maximum shortening length

Geberit HDPE bend 45° long



Application Purpose

- For all drainage pipes

Characteristics

- UV-resistant

Product Details

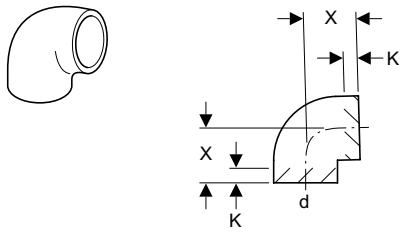
Product material	HDPE
------------------	------

Ordering Information

Article no.	dØ [mm]	X1 [cm]	X2 [cm]	K1 [cm]	K2 [cm]
365.046.16.1	75	9,1	5	6	2
367.046.16.1	110	14,7	6	11	2,5



Geberit HDPE bend 88.5°



Application Purpose

- For all drainage pipes

Characteristics

- UV-resistant

Product Details

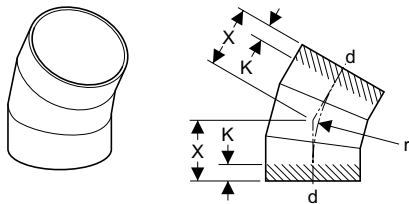
Product material	HDPE
------------------	------

Ordering Information

Article no.	dØ [mm]	X [cm]	K* [cm]
361.088.16.1	50	6	2
363.088.16.1	56	6,5	2
364.088.16.1	63	7	2
365.088.16.1	75	7,5	2
366.088.16.1	90	8	2
367.088.16.1	110	9,5	2,5
368.088.16.1	125	10	2,5
369.088.16.1	160	12	2,5

* K indicates the maximum shortening length

Geberit HDPE segment bend 30°



Application Purpose

- For all drainage pipes

Characteristics

- UV-resistant

Product Details

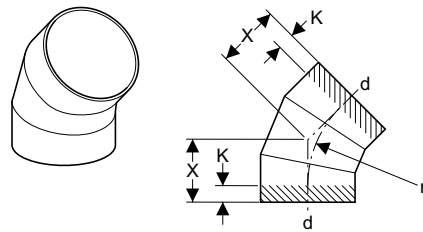
Product material	HDPE
------------------	------

Ordering Information

Article no.	dØ [mm]	X [cm]	K* [cm]	r [cm]
370.030.16.1	200	15	2	20
371.030.16.1	250	16	3	42
372.030.16.1	315	17	3	47,3

* K indicates the maximum shortening length

Geberit HDPE segment bend 45°



Application Purpose

- For all drainage pipes

Characteristics

- UV-resistant

Product Details

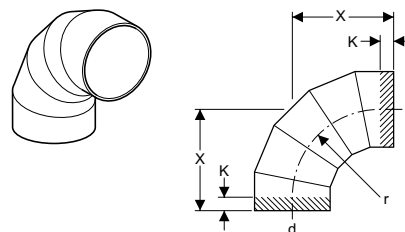
Product material	HDPE
------------------	------

Ordering Information

Article no.	dØ [mm]	X [cm]	K* [cm]	r [cm]
370.045.16.1	200	18	2,5	20
371.045.16.1	250	16,5	3	29
372.045.16.1	315	18	3	32,5

* K indicates the maximum shortening length

Geberit HDPE segment bend 90°



Application Purpose

- For all drainage pipes

Characteristics

- UV-resistant

Product Details

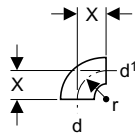
Product material	HDPE
------------------	------

Ordering Information

Article no.	dØ [mm]	X [cm]	K* [cm]	r [cm]
370.055.16.1	200	30	2,5	20
371.055.16.1	250	33,5	3	29
372.055.16.1	315	37	3	32,5

* K indicates the maximum shortening length

Geberit HDPE bend 90° reduced, without legs



Application Purpose
• For all drainage pipes

Characteristics
• UV-resistant
• Reduced

Product Details

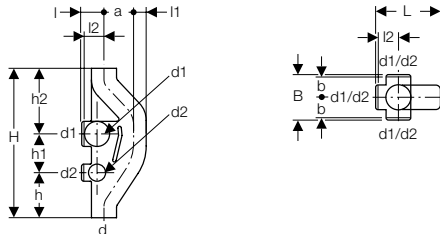
Product material	HDPE
------------------	------

Ordering Information

Article no.	dØ [mm]	d1Ø [mm]	X [cm]	r [cm]
361.872.16.1	50	40	4	4
363.873.16.1	56	50	4	4
364.873.16.1	63	50	5	5
364.874.16.1	63	56	5	5

HDPE Sovent

Geberit HDPE Sovent fitting



Application Purpose
• For all drainage pipes

Characteristics
• UV-resistant
• 6 connection possibilities, closed

Product Details

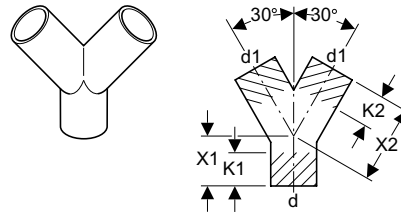
Product material	HDPE
------------------	------

Ordering Information

Article no.	dØ [mm]	d1Ø [mm]	d2Ø [mm]
367.611.16.1	110	110	75
369.001.16.1	160	110	75

HDPE Branch and ball fittings

Geberit HDPE double-Y-branch fitting 2 x 30°



Application Purpose
• For all drainage pipes

Characteristics
• UV-resistant

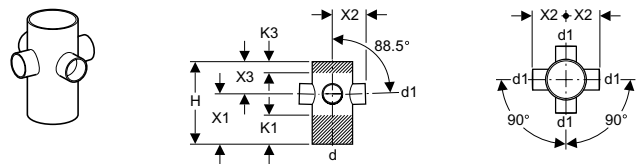
Product Details

Product material	HDPE
------------------	------

Ordering Information

Article no.	dØ [mm]	d1Ø [mm]	X1 [cm]	X2 [cm]	K1 [cm]	K2 [cm]
361.459.16.1	50	40	5,5	11	4	5
361.462.16.1	50	50	5,5	11	3	4
363.462.16.1	56	50	6	12	4	5
363.465.16.1	56	56	1,8	5,3	-	-
364.462.16.1	63	50	6,5	13	5	6
364.465.16.1	63	56	6,5	13	4	6
365.465.16.1	75	56	7	14	6	7
365.470.16.1	75	63	7	14	5	6
367.480.16.1	110	90	9	18	7	7
367.481.16.1	110	110	9	10,2	5	-

Geberit HDPE multibranch fitting 88.5°, connections 90° offset



Application Purpose
• For all drainage pipes

Characteristics
• UV-resistant

Product Details

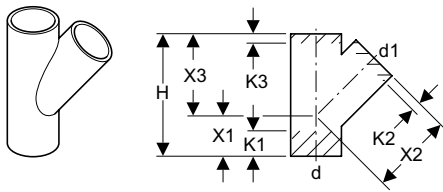
Product material	HDPE
------------------	------

Ordering Information

Article no.	dØ [mm]	d1Ø [mm]	X1 [cm]	X2 [cm]	X3 [cm]	H [cm]	K1 [cm]	K3 [cm]
367.445.16.1	110	56	13,5	9	9	22,5	7,5	3



Geberit HDPE Y-branch fitting 45°



Application Purpose

- For all drainage pipes

Characteristics

- UV-resistant

Product Details

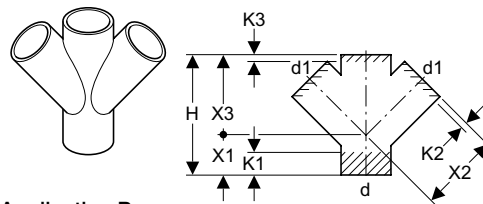
Product material	HDPE
------------------	------

Ordering Information

Article no.	dØ [mm]	d1Ø [mm]	X1 [cm]	X2 [cm]	X3 [cm]	H [cm]	K1 [cm]	K2 [cm]	K3 [cm]
379.108.16.1	32	32	3,5	7	7	10,5	2	2	2
360.108.16.1	40	32	4,5	9	9	13,5	3	3,5	3,5
360.109.16.1	40	40	4,5	9	9	13,5	2,5	3	3
361.109.16.1	50	40	5,5	11	11	16,5	4	4,5	4,5
361.112.16.1	50	50	5,5	11	11	16,5	3,5	2	2
363.112.16.1	56	50	6	12	12	18	4	3	3
363.115.16.1	56	56	6	12	12	18	4	2,5	2,5
364.109.16.1	63	40	6,5	13	13	19,5	4,5	4,5	4
364.112.16.1	63	50	6,5	13	13	19,5	5	3	3
364.115.16.1	63	56	6,5	13	13	19,5	4,5	2,5	2,5
364.120.16.1	63	63	6,5	13	13	19,5	4	2	2
365.109.16.1	75	40	7	14	14	21	6,5	5	6
365.112.16.1	75	50	7	14	14	21	6	3	4
365.115.16.1	75	56	7	14	14	21	5,5	2,5	3,5
365.120.16.1	75	63	7	14	14	21	4,5	2,5	3,5
365.125.16.1	75	75	7	14	14	21	4	2,5	2,5
366.109.16.1	90	40	8	16	16	24	7,5	5,5	6,5
366.112.16.1	90	50	8	16	16	24	8	4	5
366.115.16.1	90	56	8	16	16	24	7,5	3,5	4,5
366.120.16.1	90	63	8	16	16	24	7	3	4
366.125.16.1	90	75	8	16	16	24	6,5	3	3,5
366.130.16.1	90	90	8	16	16	24	5	2	2
367.109.16.1	110	40	9	18	18	27	9,5	6	7,5
367.112.16.1	110	50	9	18	18	27	9,5	5	5,5
367.115.16.1	110	56	9	18	18	27	9	4	4,5
367.120.16.1	110	63	9	18	18	27	8,5	3,5	4
367.125.16.1	110	75	9	18	18	27	7,5	3	3,5
367.130.16.1	110	90	9	18	18	27	6,5	2,5	3
367.135.16.1	110	110	9	18	18	27	5,5	2	2
368.120.16.1	125	63	10	20	20	30	10,5	4,5	6
368.125.16.1	125	75	10	20	20	30	9,5	4	5
368.130.16.1	125	90	10	20	20	30	8,5	3	3,5
368.135.16.1	125	110	10	20	20	30	7	2,5	2,5
368.139.16.1	125	125	10	20	20	30	6	2	2
369.125.16.1	160	75	12,5	25	25	37,5	13,5	6,5	7,5
369.130.16.1	160	90	12,5	25	25	37,5	12,5	5,5	6,5
369.135.16.1	160	110	12,5	25	25	37,5	11	4,5	5,5
369.139.16.1	160	125	12,5	25	25	37,5	10	4	5
369.145.16.1	160	160	12,5	25	25	37,5	7,5	2,5	2,5
370.125.16.1	200	75	18	36	36	54	18	14	12

Article no.	dØ [mm]	d1Ø [mm]	X1 [cm]	X2 [cm]	X3 [cm]	H [cm]	K1 [cm]	K2 [cm]	K3 [cm]
370.135.16.1	200	110	18	36	36	54	15	14	6,5
370.139.16.1	200	125	18	36	36	54	14	13	5,5
370.145.16.1	200	160	18	36	36	54	11,5	8,5	3,5
370.146.16.1	200	200	18	36	36	54	8,5	1	1
371.135.16.1	250	110	22	44	44	66	21,5	13,5	15
371.139.16.1	250	125	22	44	44	66	20,5	17,5	14
371.145.16.1	250	160	22	44	44	66	18	13	5
371.146.16.1	250	200	22	44	44	66	15	5	9
371.147.16.1	250	250	22	44	44	66	11,5	5,5	5,5
372.135.16.1	315	110	28	56	56	84	30,5	26	23,5
372.139.16.1	315	125	28	56	56	84	29	25	22
372.145.16.1	315	160	28	56	56	84	27	20,5	20
372.146.16.1	315	200	28	56	56	84	24	12,5	17,5
372.147.16.1	315	250	28	56	56	84	20,5	13	14
372.148.16.1	315	315	28	56	56	84	16	9,5	9,5

Geberit HDPE double-Y-branch fitting 2 x 45° with connections 180° offset



Application Purpose

- For all drainage pipes
- For vertical installation

Characteristics

- UV-resistant

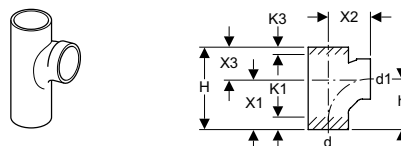
Product Details

Product material	HDPE
------------------	------

Ordering Information

Article no.	dØ [mm]	d1Ø [mm]	X1 [cm]	X2 [cm]	X3 [cm]	H [cm]	K1 [cm]	K2 [cm]	K3 [cm]
367.209.16.1	110	40	9	18	18	27	9,5	6	7,5
367.212.16.1	110	50	9	18	18	27	9,5	6	7,5
367.235.16.1	110	110	9	18	18	27	5	1,5	1,5

Geberit HDPE branch fitting 88.5°, swept-entry



Application Purpose

- For all drainage pipes

Characteristics

- UV-resistant

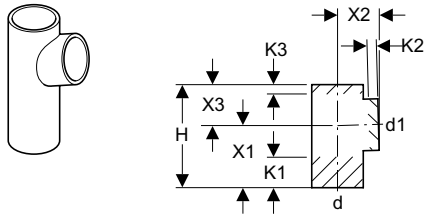
Product Details

Product material	HDPE
------------------	------

Ordering Information

Article no.	dØ [mm]	d1Ø [mm]	X1 [cm]	X2 [cm]	X3 [cm]	H [cm]	h [cm]	K1 [cm]	K3 [cm]
367.163.16.1	110	110	13,5	11,5	9	22,5	13,8	3,5	3,5

Geberit HDPE branch fitting 88.5°



Application Purpose

- For all drainage pipes

Characteristics

- UV-resistant

Product Details

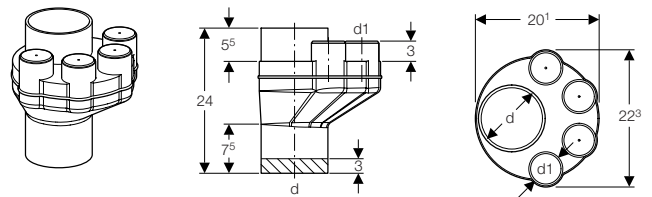
Product material	HDPE
------------------	------

Ordering Information

Article no.	dØ [mm]	d1Ø [mm]	X1 [cm]	X2 [cm]	X3 [cm]	H [cm]	K1 [cm]	K2 [cm]	K3 [cm]
379.158.16.1	32	32	5	3,5	3,5	8,5	2,5	1	1
360.158.16.1	40	32	7,5	5,5	5,5	13	5	2,5	2
360.159.16.1	40	40	7,5	5,5	5,5	13	4,5	2,5	2,5
361.159.16.1	50	40	9	6	6	15	6	2,5	3
361.162.16.1	50	50	9	6	6	15	5,5	2,5	2,5
363.162.16.1	56	50	10,5	7	7	17,5	7	3	3,5
363.165.16.1	56	56	10,5	7	7	17,5	6,5	3	3
364.159.16.1	63	40	10,5	7	7	17,5	7	3	3
364.162.16.1	63	50	10,5	7	7	17,5	7	3	3,5
364.165.16.1	63	56	10,5	7	7	17,5	6,5	3	3
364.170.16.1	63	63	10,5	7	7	17,5	6	3	3
365.159.16.1	75	40	10,5	7	7	17,5	7,5	2,5	4
365.162.16.1	75	50	10,5	7	7	17,5	7	2,5	3,5
365.165.16.1	75	56	10,5	7	7	17,5	6,5	2,5	3
365.170.16.1	75	63	10,5	7	7	17,5	6	2,5	2,5
365.175.16.1	75	75	10,5	7	7	17,5	5,5	2,5	2,5
366.159.16.1	90	40	12	8	8	20	8,5	2,5	4,5
366.162.16.1	90	50	12	8	8	20	8,5	2,5	4,5
366.165.16.1	90	56	12	8	8	20	8	2,5	4
366.170.16.1	90	63	12	8	8	20	7,5	2,5	3,5
366.175.16.1	90	75	12	8	8	20	7	2,5	3
366.180.16.1	90	90	12	8	8	20	6,5	2,5	2,5
367.159.16.1	110	40	13,5	9	9	22,5	10	2,5	6
367.162.16.1	110	50	13,5	9	9	22,5	9,5	2,5	5
367.165.16.1	110	56	13,5	9	9	22,5	9	2,5	4,5
367.170.16.1	110	63	13,5	9	9	22,5	9	2,5	4
367.175.16.1	110	75	13,5	9	9	22,5	8,5	2,5	3,5
367.180.16.1	110	90	13,5	9	9	22,5	7,5	2,5	3
367.185.16.1	110	110	13,5	9	9	22,5	6,5	2	2
368.162.16.1	125	50	15	10	10	25	11	2,5	6
368.165.16.1	125	56	15	10	10	25	10,5	2,5	5,5
368.170.16.1	125	63	15	10	10	25	10,5	2,5	5
368.175.16.1	125	75	15	10	10	25	10	2,5	4,5
368.180.16.1	125	90	15	10	10	25	9	2,5	4
368.185.16.1	125	110	15	10	10	25	8	2	3
368.189.16.1	125	125	15	10	10	25	7	2	2
369.175.16.1	160	75	21	14	14	35	15	4,5	8

Article no.	dØ [mm]	d1Ø [mm]	X1 [cm]	X2 [cm]	X3 [cm]	H [cm]	K1 [cm]	K2 [cm]	K3 [cm]
369.185.16.1	160	110	21	14	14	35	13,5	4,5	6
369.195.16.1	160	160	21	14	14	35	10,5	3,5	3
370.180.16.1	200	90	18	18	18	36	7	6	7
370.185.16.1	200	110	18	18	18	36	7	6	7
370.195.16.1	200	160	18	18	18	36	4,5	5	4,5
370.196.16.1	200	200	20	20	20	40	2,5	3	2,5
371.185.16.1	250	110	22	22	22	44	11	7,5	11
371.189.16.1	250	125	22	22	22	44	10,5	7,5	10,5
371.195.16.1	250	160	22	22	22	44	8,5	6,5	8,5
371.196.16.1	250	200	24	24	24	48	6,5	4	6,5
371.197.16.1	250	250	24	24	24	48	4	4	4
372.185.16.1	315	110	28	28	28	56	17	10	17
372.189.16.1	315	125	28	28	28	56	16,5	10	16,5
372.195.16.1	315	160	28	28	28	56	14,5	9	14,5
372.196.16.1	315	200	28	28	28	56	12	6,5	12
372.197.16.1	315	250	28	28	28	56	9,5	6,5	9,5
372.198.16.1	315	315	28	28	28	56	7	6,5	7

Geberit HDPE waste manifold



Application Purpose

- For all drainage pipes

Characteristics

- UV-resistant
- 4 connection possibilities dia. 56 mm, sealed

Product Details

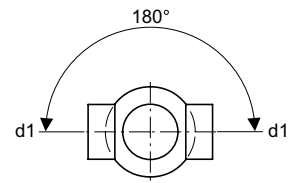
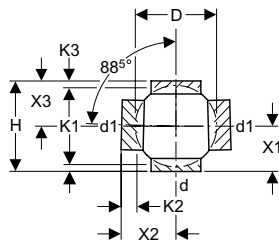
Product material	HDPE
------------------	------

Ordering Information

Article no.	dØ [mm]	d1Ø [mm]	Colour
367.612.16.1	110	56	black



Geberit HDPE double branchball fitting 88.5°, connections 180° offset



Application Purpose

- For all drainage pipes

Characteristics

- UV-resistant

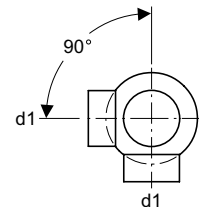
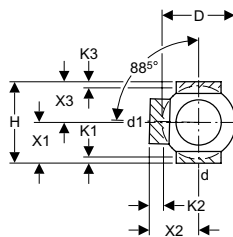
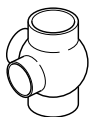
Product Details

Product material	HDPE
------------------	------

Ordering Information

Article no.	dØ [mm]	d1Ø [mm]	D [cm]	X1 [cm]	X2 [cm]	X3 [cm]	H [cm]	K1 [cm]	K2 [cm]	K3 [cm]
364.270.16.1	63	63	10	8	10	8	16	1,5	4,5	1,5
365.275.16.1	75	75	12	8	10	8	16	1,5	3,5	1,5
366.280.16.1	90	90	14	9	11	9	18	2	4	2
367.262.16.1	110	50	17	10	12	10	20	1,5	1,5	1,5
367.265.16.1	110	56	17	10	12	10	20	1,5	1,5	1,5
367.270.16.1	110	63	17	10	12	10	20	1,5	1,5	1,5
367.275.16.1	110	75	17	10	12	10	20	1,5	1,5	1,5
367.280.16.1	110	90	17	10	12	10	20	1,5	1,5	1,5
367.285.16.1	110	110	17	10	12	10	20	1,5	4	1,5
368.285.16.1	125	110	18	10	12,5	10	20	1,5	4	1,5
369.285.16.1	160	110	23	12,5	16	12,5	25	2	1,5	2

Geberit HDPE double branchball 88.5°, connections 90° offset



Application Purpose

- For all drainage pipes

Characteristics

- UV-resistant

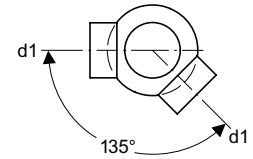
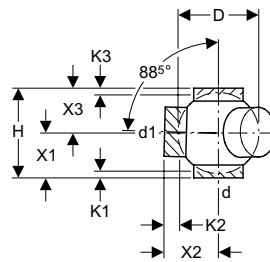
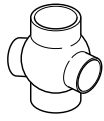
Product Details

Product material	HDPE
------------------	------

Ordering Information

Article no.	dØ [mm]	d1Ø [mm]	D [cm]	X1 [cm]	X2 [cm]	X3 [cm]	H [cm]	K1 [cm]	K2 [cm]	K3 [cm]
364.320.16.1	63	63	10	8	10	8	16	1,5	4,5	1,5
365.325.16.1	75	75	12	8	10	8	16	1,5	3,5	1,5
366.330.16.1	90	90	14	9	11	9	18	2	4	2
367.315.16.1	110	56	17	10	12	10	20	1,5	1,5	1,5
367.320.16.1	110	63	17	10	12	10	20	1,5	1,5	1,5
367.325.16.1	110	75	17	10	12	10	20	1,5	1,5	1,5
367.330.16.1	110	90	17	10	12	10	20	1,5	1,5	1,5
367.335.16.1	110	110	17	10	12	10	20	1,5	4	1,5
368.335.16.1	125	110	18	10	12,5	10	20	1,5	4	1,5
369.335.16.1	160	110	23	12,5	16	12,5	25	2	1,5	2

Geberit HDPE double branchball 88.5°, connections 135° offset



Application Purpose

- For all drainage pipes

Characteristics

- UV-resistant

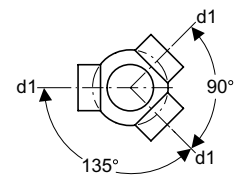
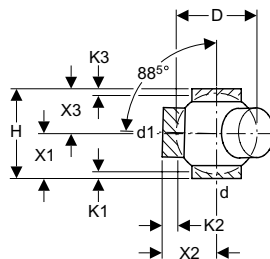
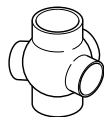
Product Details

Product material	HDPE
------------------	------

Ordering Information

Article no.	dØ [mm]	d1Ø [mm]	D [cm]	X1 [cm]	X2 [cm]	X3 [cm]	H [cm]	K1 [cm]	K2 [cm]	K3 [cm]
364.370.16.1	63	63	10	8	10	8	16	1,5	4,5	1,5
365.375.16.1	75	75	12	8	10	8	16	1,5	3,5	1,5
366.380.16.1	90	90	14	9	11	9	18	2	4	2
367.362.16.1	110	50	17	10	12	10	20	1,5	1,5	1,5
367.365.16.1	110	56	17	10	12	10	20	1,5	1,5	1,5
367.370.16.1	110	63	17	10	12	10	20	1,5	1,5	1,5
367.375.16.1	110	75	17	10	12	10	20	1,5	1,5	1,5
367.380.16.1	110	90	17	10	12	10	20	1,5	1,5	1,5
367.385.16.1	110	110	17	10	12	10	20	1,5	4	1,5
368.385.16.1	125	110	18	10	12,5	10	20	1,5	4	1,5
369.385.16.1	160	110	23	12,5	16	12,5	25	2	1,5	2

Geberit HDPE triple branchball fitting 88.5°, connections 135° offset



Application Purpose

- For all drainage pipes

Characteristics

- UV-resistant

Product Details

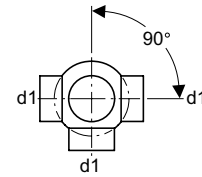
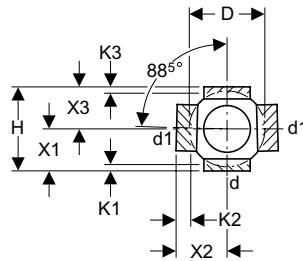
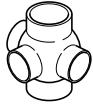
Product material	HDPE
------------------	------

Ordering Information

Article no.	dØ [mm]	d1Ø [mm]	D [cm]	X1 [cm]	X2 [cm]	X3 [cm]	H [cm]	K1 [cm]	K2 [cm]	K3 [cm]
364.600.16.1	63	63	10	8	10	8	16	1,5	4,5	1,5
365.600.16.1	75	75	12	8	10	8	16	1,5	3,5	1,5
367.600.16.1	110	110	17	10	12	10	20	1,5	4	1,5
368.600.16.1	125	110	18	10	12	10	20	1,5	4	1,5



Geberit HDPE triple branchball fitting 88.5°, connections 90° offset



Application Purpose

- For all drainage pipes

Characteristics

- UV-resistant

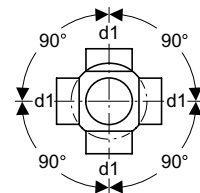
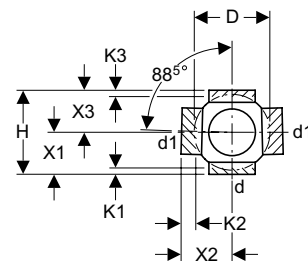
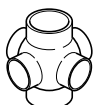
Product Details

Product material	HDPE
------------------	------

Ordering Information

Article no.	dØ [mm]	d1Ø [mm]	D [cm]	X1 [cm]	X2 [cm]	X3 [cm]	H [cm]	K1 [cm]	K2 [cm]	K3 [cm]
364.605.16.1	63	63	10	8	10	8	16	1,5	4,5	1,5
365.605.16.1	75	75	12	8	10	8	16	1,5	3,5	1,5
366.605.16.1	90	90	14	9	11	9	18	2	4	2
367.605.16.1	110	110	17	10	12	10	20	1,5	4	1,5
368.605.16.1	125	110	18	10	12	10	20	1,5	4	1,5
369.605.16.1	160	110	23	12,5	16	12,5	25	2	1,5	2

Geberit HDPE multi-branchball fitting 88.5°, connections 90° offset



Application Purpose

- For all drainage pipes

Characteristics

- UV-resistant

Product Details

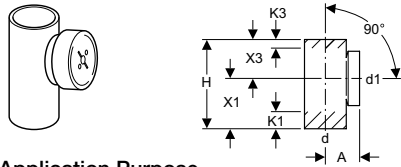
Product material	HDPE
------------------	------

Ordering Information

Article no.	dØ [mm]	d1Ø [mm]	D [cm]	X1 [cm]	X2 [cm]	X3 [cm]	H [cm]	K1 [cm]	K2 [cm]	K3 [cm]
364.610.16.1	63	63	10	8	10	8	16	1,5	4,5	1,5
365.610.16.1	75	75	12	8	10	8	16	1,5	3,5	1,5
367.610.16.1	110	110	17	10	12	10	20	1,5	4	1,5
368.610.16.1	125	110	18	10	12,5	10	20	1,5	4	1,5

HDPE Access pipes

Geberit HDPE access pipe 90° with round access cover



Application Purpose

- For all drainage pipes
- For cleaning and inspection of pipe sections

Characteristics

- UV-resistant
- Round opening

Product Details

Product material	HDPE
------------------	------

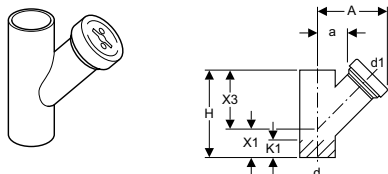
Scope Of Delivery

- Sealing cap PP
- Seal EPDM

Ordering Information

Article no.	dØ [mm]	d1Ø [mm]	A [cm]	X1 [cm]	X3 [cm]	H [cm]	K1 [cm]	K3 [cm]
364.451.16.1	63	63	9	10,5	7	17,5	4,5	1
365.451.16.1	75	75	9,5	10,5	7	17,5	3,5	-
366.451.16.1	90	90	11	12	8	20	3	-
367.451.16.1	110	110	9	13,5	10,5	24	4,5	-
368.451.16.1	125	110	13	15	10	25	6	1
369.451.16.1	160	110	15	21	14	35	12	4

Geberit HDPE access pipe 45° with round access cover



Application Purpose

- For all drainage pipes
- For cleaning and inspection of pipe sections

Characteristics

- UV-resistant
- Round opening

Product Details

Product material	HDPE
------------------	------

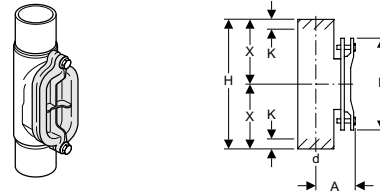
Scope Of Delivery

- Sealing cap PP
- Seal EPDM

Ordering Information

Article no.	dØ [mm]	d1Ø [mm]	A [cm]	a [cm]	X1 [cm]	X3 [cm]	H [cm]	K1 [cm]
367.453.16.1	110	110	19,5	6,5	9	18	27	5,5
368.453.16.1	125	110	20	7	10	20	30	7
369.453.16.1	160	110	22	9	12,5	25	37,5	11

Geberit HDPE access pipe 90° with oval access cover



Application Purpose

- For all drainage pipes
- For cleaning and inspection of pipe sections

Characteristics

- UV-resistant
- Oval opening

Product Details

Product material	HDPE
------------------	------

Scope Of Delivery

- Seal EPDM
- Steel cover, HDPE coated

Ordering Information

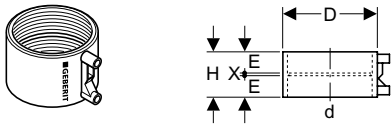
Article no.	dØ [mm]	A [cm]	X [cm]	H [cm]	h [cm]	K* [cm]
367.454.16.1	110	12	20	40	28	3
368.454.16.1	125	12,5	20,5	41	28	4
369.454.16.1	160	14	21,5	43	28	4
370.454.16.1	200	17,5	32,5	65	38	5,5
371.454.16.1	250	20	29	58	38	3
372.454.16.1	315	23	31	62	38	8

* K indicates the maximum shortening length



HDPE Electrofusion

Geberit electrofusion sleeve coupling



Application Purpose

- For all drainage pipes
- For plugging or pushing onto pipes and fittings
- For tension resistant connection of pipes and fittings

Characteristics

- UV-resistant
- Can be welded with Geberit electrofusion machine ESG 40/200

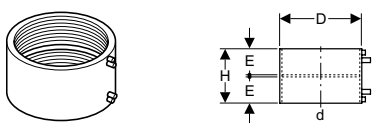
Product Details

Product material	HDPE
------------------	------

Ordering Information

Article no.	dØ [mm]	D [cm]	E [cm]	X [cm]	H [cm]
360.771.16.1	40	5,2	2,8	0,3	6
361.771.16.1	50	6,2	2,8	0,3	6
363.771.16.1	56	6,8	2,8	0,3	6
364.771.16.1	63	7,6	2,8	0,3	6
365.771.16.1	75	8,9	2,8	0,3	6
366.771.16.1	90	10,4	2,8	0,3	6
367.771.16.1	110	12,5	2,8	0,3	6
368.771.16.1	125	14,2	2,8	0,3	6
312.771.16.1	135	15	2,8	0,3	6
369.771.16.1	160	17,8	2,8	0,3	6

Geberit electrofusion coupling with integrated thermal fuse



Application Purpose

- For all drainage pipes
- For plugging or pushing onto pipes and fittings
- For tension resistant connection of pipes and fittings

Characteristics

- UV-resistant
- Integrated heat fuse
- Can be welded with Geberit start switch ESG-T2
- Heat-insulated

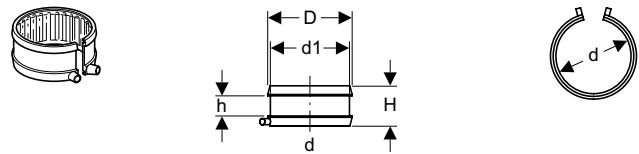
Product Details

Product material	HDPE
------------------	------

Ordering Information

Article no.	dØ [mm]	D [cm]	E [cm]	H [cm]
370.775.16.1	200	22,4	7,5	15
371.775.16.1	250	27,5	7,5	15
372.775.16.1	315	34,3	7,5	15

Geberit electrofusion tape for anchor bracket



Application Purpose

- For anchor-point fastening of pipes in conjunction with pipe brackets

Characteristics

- 1-section
- Can be welded with Geberit electrofusion machine ESG 40/200

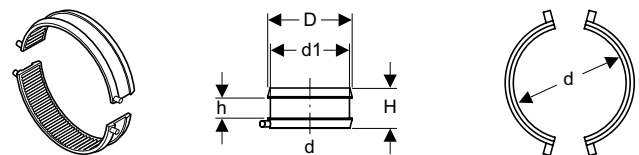
Product Details

Product material	PE
------------------	----

Ordering Information

Article no.	dØ [mm]	d1Ø [mm]	D [cm]	H [cm]	h [cm]
361.776.16.1	50	58	6,6	6	3
363.776.16.1	56	64	7,2	6	3
364.776.16.1	63	71	7,9	6	3
365.776.16.1	75	83	9,1	6	3
366.776.16.1	90	98	10,6	6	3
367.776.16.1	110	118	12,6	6	3
368.776.16.1	125	133	14,1	6	3
369.776.16.1	160	168	17,6	6	3
370.776.16.1	200	208	21,6	6	3
371.776.16.1	250	258	26,6	6	3

Set Geberit electrofusion tape for anchor bracket (2-piece)



Application Purpose

- For anchor-point fastening of pipes in conjunction with pipe brackets

Characteristics

- 2-sections
- Can be welded with Geberit electrofusion machine ESG 40/200

Product Details

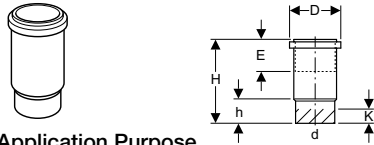
Product material	PE
------------------	----

Ordering Information

Article no.	dØ [mm]	d1Ø [mm]	D [cm]	H [cm]	h [cm]
372.776.16.1	315	323	33,1	6	3

HDPE Sockets

Geberit HDPE expansion socket



Application Purpose

- For all drainage pipes
- For horizontal and vertical installation

Characteristics

- UV-resistant

Product Details

Product material	HDPE
------------------	------

Scope Of Delivery

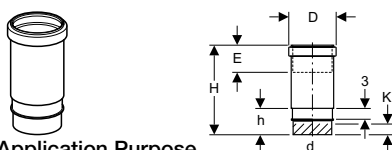
- Lip seal EPDM
- Protection cap

Ordering Information

Article no.	dØ [mm]	D [cm]	E [cm]	H [cm]	h [cm]	K* [cm]
379.791.16.1	32	4,8	7 - 10,5	8,5	1	-
360.700.16.1	40	7	7 - 10,5	23,3	6,5	5,5
361.700.16.1	50	8	7 - 10,5	23,3	6,5	5,5
363.700.16.1	56	8,6	7 - 10,5	23,3	6,5	5,5
364.700.16.1	63	9,3	7 - 10,5	23,3	6,5	5,5
368.700.16.1	125	16,2	7 - 10,5	23,9	6,5	5,5
369.700.16.1	160	20,2	7 - 10,5	24	7	5,5
370.700.16.1	200	25	17 - 20,5	40	12,5	11
371.700.16.1	250	29,1	17 - 20,5	42,5	17	14
372.700.16.1	315	36,1	17 - 20,5	45,8	17,5	14

* K indicates the maximum shortening length

Geberit HDPE expansion socket with double flange



Application Purpose

- For all drainage pipes

Characteristics

- UV-resistant
- Double flange bushing, rim for anchor bracket

Product Details

Product material	HDPE
------------------	------

Scope Of Delivery

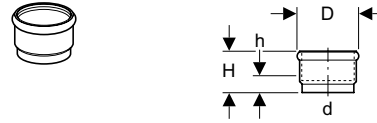
- Lip seal EPDM
- Protection cap

Ordering Information

Article no.	dØ [mm]	D [cm]	E [cm]	H [cm]	h [cm]	K* [cm]
365.700.16.1	75	10,8	7 - 10,5	23,9	7,4	3
366.700.16.1	90	12,4	7 - 10,5	23,9	7,5	3
367.700.16.1	110	13,5	7 - 10,5	25,5	8	4

* K indicates the maximum shortening length

Geberit HDPE ring seal socket



Application Purpose

- For all drainage pipes

Characteristics

- UV-resistant

Product Details

Product material	HDPE
------------------	------

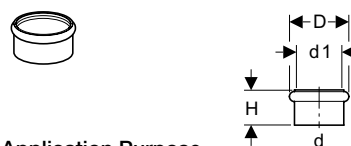
Scope Of Delivery

- Lip seal EPDM
- Protection cap

Ordering Information

Article no.	dØ [mm]	D [cm]	H [cm]	h [cm]
360.779.16.1	40	5,7	6,3	2
361.779.16.1	50	6,7	6,3	2
363.779.16.1	56	7,2	6,4	2
364.779.16.1	63	8	6,5	2
365.779.16.1	75	9,2	8,8	2,5
366.779.16.1	90	10,8	8,8	2,5
367.779.16.1	110	13,1	8,8	2,5
368.779.16.1	125	14,9	8,8	2,5
369.779.16.1	160	18,8	12,3	3

Geberit HDPE ring seal socket, reduced



Application Purpose

- For all drainage pipes

Characteristics

- UV-resistant
- Reduced

Product Details

Product material	HDPE
------------------	------

Scope Of Delivery

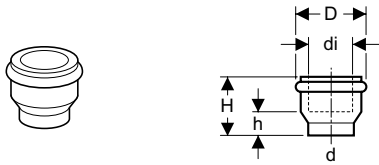
- Lip seal EPDM
- Protection cap

Ordering Information

Article no.	dØ [mm]	d1Ø [mm]	D [cm]	H [cm]
361.752.16.1	57	50	6,7	4
364.752.16.1	63	56	7,2	4,4



Geberit HDPE connection ring seal socket



Application Purpose

- For all drainage pipes

Characteristics

- UV-resistant

Product Details

Product material	HDPE
------------------	------

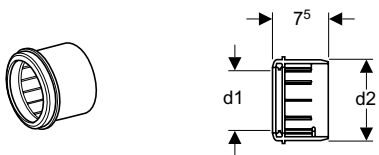
Scope Of Delivery

- Lip seal EPDM
- Protection plug

Ordering Information

Article no.	dØ [mm]	diØ [mm]	D [cm]	H [cm]	h [cm]
379.768.16.1	32	32	4,6	2,5	0,5

Geberit HDPE adapter sleeve



Application Purpose

- For all drainage pipes

Characteristics

- UV-resistant

Product Details

Product material	HDPE
------------------	------

Scope Of Delivery

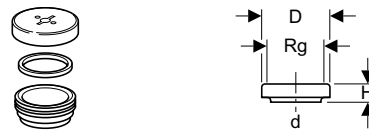
- Lip seal EPDM

Ordering Information

Article no.	d1Ø [mm]	d2Ø [mm]
367.928.16.1	90	110

HDPE Ends

Geberit HDPE complete stop end



Application Purpose

- For all drainage pipes
- For cleaning and inspection of pipe sections

Characteristics

- UV-resistant
- Round opening

Product Details

Product material	HDPE
------------------	------

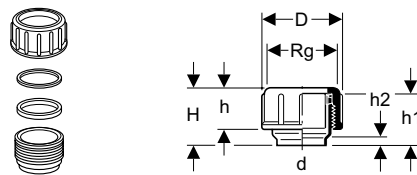
Scope Of Delivery

- Sealing cap PP
- Seal EPDM

Ordering Information

Article no.	dØ [mm]	Rg [mm/in]	D [cm]	H [cm]
367.471.16.1	110	130 x 1/4	14,3	4

Geberit HDPE threaded connector end with union nut



Application Purpose

- For all drainage pipes

Characteristics

- UV-resistant

Product Details

Product material	HDPE
------------------	------

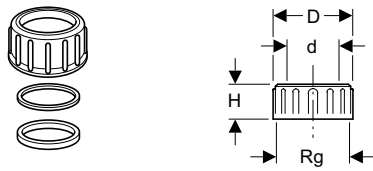
Scope Of Delivery

- Union nut PP
- Slip ring PP
- Seal EPDM
- Protective cap

Ordering Information

Article no.	dØ [mm]	Rg [mm/in]	D [cm]	H [cm]	h [cm]	h1 [cm]	h2 [cm]
379.740.16.1	32	44 x 1/8	5,6	4,5	2,6	3	1
360.740.16.1	40	52 x 1/6	6,4	6,3	3,3	5	2
361.740.16.1	50	62 x 1/6	7,4	6,3	3,3	5	2
363.740.16.1	56	70 x 1/6	8,5	6,8	3,5	5	2
364.740.16.1	63	75 x 1/6	9	6,8	4,2	5	2
365.740.16.1	75	95 x 1/6	11,2	9,6	4,5	7,5	2,5
366.740.16.1	90	110 x 1/4	12,9	9,7	5	7,5	2,5
367.740.16.1	110	130 x 1/4	14,9	9,7	6,5	7,5	2,5

Geberit HDPE union nut



Application Purpose

- For all drainage pipes

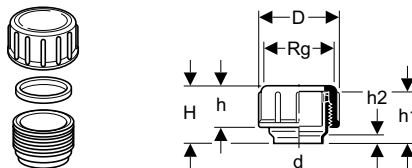
Scope Of Delivery

- Seal EPDM
- Slip ring PP

Ordering Information

Article no.	dØ [mm]	Rg [mm/in]	D [cm]	H [cm]
363.749.16.1	56	70 x 1/6	8,5	6,8
364.749.16.1	63	75 x 1/6	9	6,8

Geberit HDPE threaded connector end with screw cap



Application Purpose

- For all drainage pipes

Characteristics

- UV-resistant

Product Details

Product material	HDPE
------------------	------

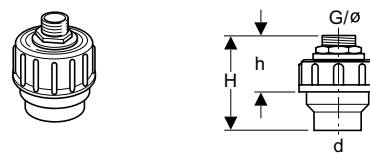
Scope Of Delivery

- Sealing cap PP
- Seal EPDM

Ordering Information

Article no.	dØ [mm]	Rg [mm/in]	D [cm]	H [cm]	h [cm]	h1 [cm]	h2 [cm]
379.750.16.1	32	44 x 1/8	5,6	4,5	2,6	3	1
360.750.16.1	40	52 x 1/6	6,4	6,3	3,3	5	2
361.750.16.1	50	62 x 1/6	7,4	6,3	3,3	5	2
363.750.16.1	56	70 x 1/6	8,5	6,8	3,5	5	2
364.750.16.1	63	75 x 1/6	9	6,8	4,2	5	2
365.750.16.1	75	95 x 1/6	11,2	9,6	4,5	7,5	2,5
366.750.16.1	90	110 x 1/4	12,9	9,7	4,8	7,5	2,5
367.750.16.1	110	130 x 1/4	14,9	9,7	6,3	7,5	2,5

Geberit straight connector with screw connection



Characteristics

- With union

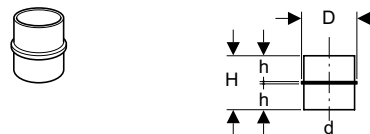
Scope Of Delivery

- With brass nipple
- Seal

Ordering Information

Article no.	dØ [mm]	G ["]	H [cm]	h [cm]
152.973.00.1	40	1/2	9	6
152.974.00.1	40	3/4	9	6
152.978.00.1	50	1	9	6
152.979.00.1	50	1/2	9	6
152.981.00.1	50	3/4	9	6

Geberit HDPE flange bushing



Application Purpose

- For all drainage pipes

Characteristics

- UV-resistant

Product Details

Product material	HDPE
------------------	------

Ordering Information

Article no.	dØ [mm]	D [cm]	H [cm]	h [cm]
379.772.16.1	32	3,8	5,2	2,4
360.772.16.1	40	4,7	6,8	3,2
361.772.16.1	50	5,7	6,8	3,2
363.772.16.1	56	6,5	5,8	2,7
364.772.16.1	63	7	7,2	3,4
365.772.16.1	75	9	7,2	3,4
366.772.16.1	90	10,3	9,2	4,4
367.772.16.1	110	12	11,7	5,6



Geberit HDPE cap for butt welding



Application Purpose

- For all drainage pipes
- For butt welding

Characteristics

- UV-resistant

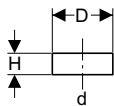
Product Details

Product material	HDPE
------------------	------

Ordering Information

Article no.	Description	dØ [mm]
379.812.16.1	Geberit HDPE cap for butt welding, dia. 32 mm	32
360.812.16.1	Geberit HDPE cap for butt welding, dia. 40 mm	40
361.812.16.1	Geberit HDPE cap for butt welding, dia. 50 mm	50
363.812.16.1	Geberit HDPE cap for butt welding, dia. 56 mm	56
364.812.16.1	Geberit HDPE cap for butt welding, dia. 63 mm	63
365.812.16.1	Geberit HDPE cap for butt welding, dia. 75 mm	75
366.812.16.1	Geberit HDPE cap for butt welding, dia. 90 mm	90
367.812.16.1	Geberit HDPE cap for butt welding, dia. 110 mm	110
368.812.16.1	Geberit HDPE cap for butt welding, dia. 125 mm	125
369.812.16.1	Geberit HDPE cap for butt welding, dia. 160 mm	160
370.812.16.1	Geberit HDPE cap for butt welding, dia. 200 mm	200

Geberit protective cap for pipe end



Application Purpose

- For closing pipes
- For protecting pipe ends

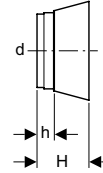
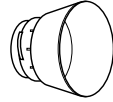
Product Details

Connecting material	HDPE
---------------------	------

Ordering Information

Article no.	dØ [mm]	D [cm]	H [cm]	Colour
360.802.92.1	40	4,2	3,5	yellow
361.802.92.1	50	5,2	3,5	yellow
363.802.92.1	56	5,8	3,5	yellow
364.802.92.1	63	6,5	3,5	yellow
365.802.92.1	75	7,8	3,5	yellow
366.802.92.1	90	9,3	3,5	yellow
367.802.92.1	110	11,3	4	yellow
368.802.92.1	125	12,9	4	yellow
369.802.92.1	160	16,4	3	yellow

Geberit HDPE protection plug for connection socket



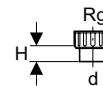
Application Purpose

- For all drainage pipes
- For WC collar

Ordering Information

Article no.	dØ [mm]	H [cm]	h [cm]	Colour
366.820.92.1	90	8,3	3,3	yellow
367.819.92.1	110	7,5	2,5	yellow

Geberit loose nut adapter



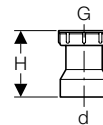
Scope Of Delivery

- Seal

Ordering Information

Article no.	dØ [mm]	Rg [mm/in]	H [cm]
152.178.16.1	50	60 x 1/8	3

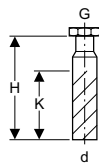
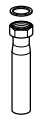
Geberit loose nut adapter



Ordering Information

Article no.	dØ [mm]	G ["]	H [cm]
152.184.16.1	32	1 1/4	2
152.175.16.1	40	1 1/4	4,5
152.176.16.1	40	1 1/2	3,5
152.179.16.1	50	1 1/4	3,3
152.180.16.1	50	1 1/2	3,3
152.181.16.1	50	2	3

Geberit straight connector with screw connection



Product Details

Product material	PE
------------------	----

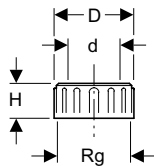
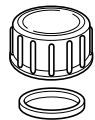
Scope Of Delivery

- Union nut
- Seal

Ordering Information

Article no.	dØ [mm]	G ["]	H [cm]	K [cm]	Colour
152.107.16.1	40	1 1/4	21	11	black
152.108.16.1	40	1 1/2	20	11	black
152.113.16.1	50	1 1/2	20	13	black
152.114.16.1	50	2	20	13	black
152.115.16.1	50	1 1/4	20	13	black

Geberit HDPE screw cap



Application Purpose

- For all drainage pipes

Product Details

Product material	PP
------------------	----

Scope Of Delivery

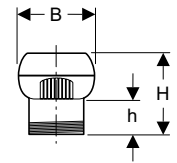
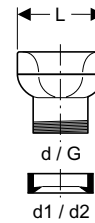
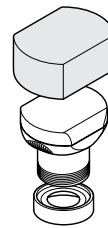
- Seal EPDM

Ordering Information

Article no.	dØ [mm]	Rg [mm/in]	D [cm]	H [cm]
379.781.16.1	32	44 x 1/8	5,6	2,6
360.781.16.1	40	52 x 1/6	6,4	3,3
361.781.16.1	50	62 x 1/6	7,4	3,3
363.781.16.1	56	70 x 1/6	8,5	3,5
364.781.16.1	63	75 x 1/6	9	4,2
365.781.16.1	75	95 x 1/6	11,2	4,5
366.781.16.1	90	110 x 1/4	12,9	5
367.781.16.1	110	130 x 1/4	14,9	6,5

Air admittance valves

Geberit air admittance valve, with thread and sleeve dia. 32 - 56 mm



Application Purpose

- For ventilation of waste water pipes
- For gravity waste water systems

Characteristics

- Male thread 1 1/2"

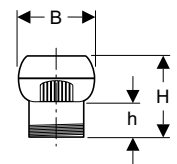
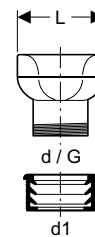
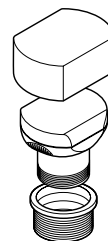
Scope Of Delivery

- Connection sleeve
- Frost protection cover

Ordering Information

Article no.	dØ [mm]	d1Ø [mm]	G ["]	d2Ø [mm]	B [cm]	H [cm]	h [cm]	L [cm]
303.900.00.1	50	32	1 1/2	40	7	7,3	3,5	8

Geberit air admittance valve, with thread and sleeve dia. 56 - 63 mm



Application Purpose

- For ventilation of waste water pipes
- For gravity waste water systems

Characteristics

- Male thread 1 1/2"

Scope Of Delivery

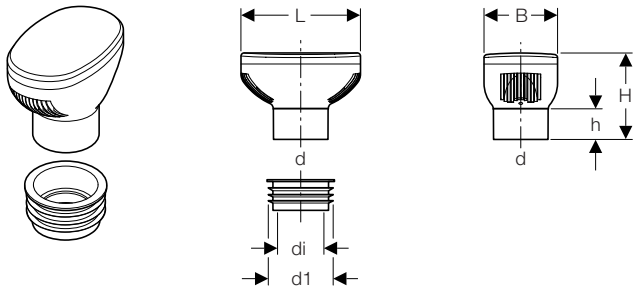
- Connection sleeve
- Frost protection cover

Ordering Information

Article no.	dØ [mm]	d1Ø [mm]	G ["]	B [cm]	H [cm]	h [cm]	L [cm]
305.900.00.1	50	57	1 1/2	7	7,3	3,5	8



Geberit air admittance valve, dia. 75 -110 mm



Application Purpose

- For ventilation of waste water pipes
- For gravity waste water systems
- Not allowed to be used as a replacement for ventilation pipes in siphon and pump pressure pipes because no ventilation through the valve is possible.

Characteristics

- Thermal insulation integrated in housing
- Air admittance valve type A I according to DIN EN 12380

Product Details

Operating temperature	-20 – +60 °C
-----------------------	--------------

Scope Of Delivery

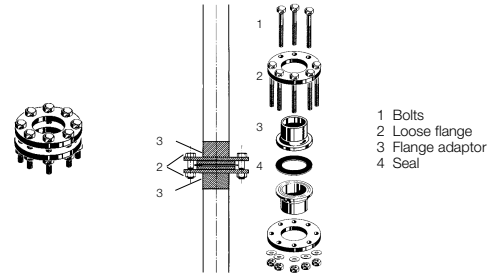
- Connection sleeve

Ordering Information

Article no.	dØ [mm]	d1Ø [mm]	diØ [mm]	B [cm]	H [cm]	h [cm]	L [cm]
310.006.00.1	90	103,5	75	12	14,1	5	19,5

HDPE Flanges

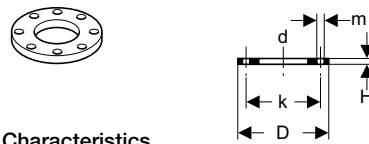
Flange



Application Purpose

- For all drainage pipes

Geberit flange



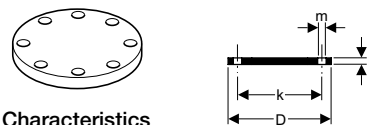
Characteristics

- Plastic-coated

Ordering Information

Article no.	dØ [mm]	D [cm]	k [cm]	m [cm]	H [cm]	n [ST]	PN [bar]
361.745.00.1	50	15	11	1,8	1,2	4	10
363.745.00.1	56 / 63	16,5	12,5	1,8	1,2	4	10
365.745.00.1	75	18,5	14,5	1,8	1,2	4	10
366.745.00.1	90	20	16	1,8	1,4	8	10
367.745.00.1	110	22	18	1,8	1,4	8	10
368.745.00.1	125	25	21	1,8	1,4	8	10
369.745.00.1	160	28,5	24	2,3	1,4	8	10
370.745.00.1	200	34	29,5	2,3	1,4	8	3,2
371.745.00.1	250	39,5	35	2,3	1,6	12	3,2
372.745.00.1	315	44,5	40	2,3	2	12	3,2

Geberit blind flange



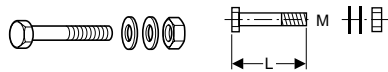
Characteristics

- Plastic-coated

Ordering Information

Article no.	dØ [mm]	D [cm]	k [cm]	m [cm]	H [cm]	n [ST]	PN [bar]
361.748.00.1	50	15	11	1,8	1,2	4	10
363.748.00.1	56 / 63	16,5	12,5	1,8	1,2	4	10
365.748.00.1	75	18,5	14,5	1,8	1,2	4	10
366.748.00.1	90	20	16	1,8	1,4	8	10
367.748.00.1	110	22	18	1,8	1,4	8	10
368.748.00.1	125	25	21	1,8	1,4	8	10
369.748.00.1	160	28,5	24	2,3	1,4	8	10
370.748.00.1	200	34	29,5	2,3	1,4	8	3,2
371.748.00.1	250	39,5	35	2,3	1,6	12	3,2
372.748.00.1	315	44,5	40	2,3	2	12	3,2

Geberit set of bolts for flange, galvanized



Characteristics

- Galvanized

Scope Of Delivery

- Washers
- Nut

Ordering Information

Article no.	dØ [mm]	M [mm]	L [cm]	Product Material
361.743.26.1	50 - 75	16	7	Steel
366.743.26.1	90 - 125	16	8	Steel
369.743.26.1	160 - 200	20	9	Steel
371.743.26.1	250	20	10	Steel
372.743.26.1	315	20	11	Steel

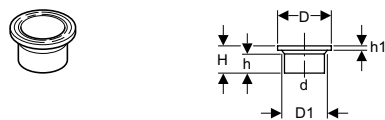
Geberit flange seal



Ordering Information

Article no.	dØ [mm]	diØ [mm]	D [cm]	H [cm]	Product Material
361.742.00.1	50	45	9,2	0,3	EPDM
363.742.00.1	56 - 63	59	10,7	0,3	EPDM
365.742.00.1	75	69	12,7	0,3	EPDM
366.742.00.1	90	83	14,2	0,3	EPDM
367.742.00.1	110	102	16,2	0,3	EPDM
368.742.00.1	125	116	19,2	0,3	EPDM
369.742.00.1	160	149	21,7	0,3	EPDM
370.742.00.1	200	191	27,2	0,3	EPDM
371.742.00.1	250	238	32,7	0,4	EPDM
372.742.00.1	315	298	37,7	0,4	EPDM

Geberit HDPE flange adapter

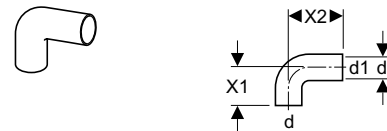


Ordering Information

Article no.	dØ [mm]	D [cm]	D1 [cm]	H [cm]	h [cm]	h1 [cm]	Product Material
361.744.16.1	50	8	5,4	6	4,2	0,8	HDPE
363.744.16.1	56	9	6,8	6	3,6	0,8	HDPE
364.744.16.1	63	9	6,8	6	3,7	0,8	HDPE
365.744.16.1	75	11	7,8	6,5	4	0,9	HDPE
366.744.16.1	90	12,8	9,6	7	4,4	1,1	HDPE
367.744.16.1	110	14,8	11,6	7,5	4,8	1,2	HDPE
368.744.16.1	125	16	13,1	8	5	1,4	HDPE
369.744.16.1	160	19,8	16,5	9	5,1	1,7	HDPE
370.744.16.1	200	26	20,6	7,8	5,4	1,4	HDPE
371.744.16.1	250	32,5	25,6	7,8	5,2	1,6	HDPE
372.744.16.1	315	37	31,5	10	7	2	HDPE

HDPE Connections

Geberit HDPE connector bend 90° with long leg for push-on seal



Application Purpose

- For all drainage pipes
- For push-on seal

Characteristics

- UV-resistant
- Long leg

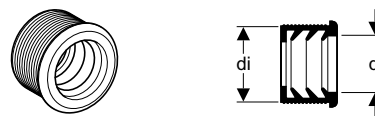
Product Details

Product material	HDPE
------------------	------

Ordering Information

Article no.	dØ [mm]	d1Ø [mm]	diØ [mm]	X1 [cm]	X2 [cm]
361.080.16.1	50	50	44	7,5	10
363.080.16.1	56	56	50	7,5	10
363.083.16.1	56	50	44	7,5	10
364.084.16.1	56	63	57	7,5	20

Geberit rubber collar for traps

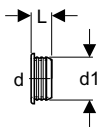


Ordering Information

Article no.	Description	dØ [mm]	diØ [mm]
152.682.00.1	Geberit rubber collar for traps, dia. 32 x 44 mm	32	44
152.689.00.1	Geberit rubber collar for traps, dia. 32 x 50 mm	32	50
152.690.00.1	Geberit rubber collar for traps, dia. 40 x 50 mm	40	50
152.691.00.1	Geberit rubber collar for traps, dia. 32 x 57 mm	32	57
152.692.00.1	Geberit rubber collar for traps, dia. 40 x 57 mm	40	57
152.693.00.1	Geberit rubber collar for traps, dia. 50 x 57 mm	50	57



Geberit rubber collar for traps



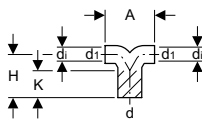
Product Details

Product material	EPDM
------------------	------

Ordering Information

Article no.	dØ [mm]	d1Ø [mm]	L [cm]	Colour
152.495.00.1	32	46	2,3	black
152.496.00.1	40	46	2,3	black
152.796.00.1	40	44	2,3	black
153.564.16.1	32	58	2,3	black
153.565.16.1	40	58	2,3	black
153.566.16.1	50	58	2,3	black

Geberit HDPE double connection bend 2 x 90°



Application Purpose

- For all drainage pipes
- For washbasins, urinals and bidets
- For push-on seal

Characteristics

- UV-resistant

Product Details

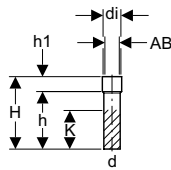
Product material	HDPE
------------------	------

Ordering Information

Article no.	dØ [mm]	d1Ø [mm]	diØ [mm]	A [cm]	H [cm]	K* [cm]
363.472.16.1	56	50	44	15,5	12	3
365.472.16.1	75	56	50	15,5	13,5	9

* K indicates the maximum shortening length

Geberit HDPE straight adapter with shrink-fitted sleeve



Application Purpose

- For all drainage pipes
- For shrinking onto connection pieces and pipe ends

Characteristics

- UV-resistant

Product Details

Product material	HDPE
------------------	------

Scope Of Delivery

- EPDM flat gasket
- Article no. with AB2, 1 additional lip seal EPDM

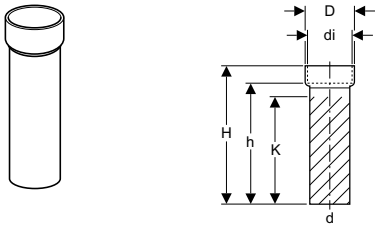
Ordering Information

Article no.	dØ [mm]	diØ [mm]	AB1 [mm]	AB2 [mm]	H [cm]	h [cm]	h1 [cm]	K [cm]
152.651.16.1	50	60	53 - 54	48 - 49	30	24	6	17
152.197.16.1	50	70	60 - 67	53 - 60	27,5	22	5,5	17
152.198.16.1	50	80	67 - 74	60 - 67	28,5	23	5,5	17
152.652.16.1	50	90	80 - 84	73 - 77	30,5	23,5	7	17
152.654.16.1	56	60	53 - 54		26,5	20,5	6	14
152.149.16.1	56	70	60 - 67	53 - 60	24,5	19	5,5	14
152.150.16.1	56	80	67 - 74	60 - 67	24,5	19	5,5	14
152.657.16.1	63	73	60 - 67		26,5	20,5	6	14
152.658.16.1	63	80	67 - 74		26,5	19	7,5	14
152.152.16.1	75	80	67 - 74		25	19	6	12
152.151.16.1	75	90	80 - 84	73 - 77	24,5	17,5	7	12
152.661.16.1	75	100	90 - 94		28	19	9	12
366.550.16.1	90	110	84 - 98		17	7	10	0
367.551.16.1	110	125	102 - 111	100 - 109	16	6	10	0
367.550.16.1	110	140	102 - 126	100 - 124	18	8	10	0
368.550.16.1	125	150	116 - 136	115 - 134	18	8	10	1
369.550.16.1	160	195	148 - 180	149 - 176	20	8	12	1
369.551.16.1	160	230	189 - 212	187 - 220	30	12	18	5
370.550.16.1	200	230	189 - 212	187 - 220	30	13	17	2
371.550.16.1	250	280	236 - 260	234 - 250	30	13	17	2
372.550.16.1	315	355	297 - 333	295 - 323	30	14	16	2

* K indicates the maximum shortening length



Geberit HDPE straight connector with socket



Application Purpose

- For all drainage pipes
- For push-on seal
- For appliances with vertical outlet

Characteristics

- UV-resistant

Product Details

Product material	HDPE
------------------	------

Scope Of Delivery

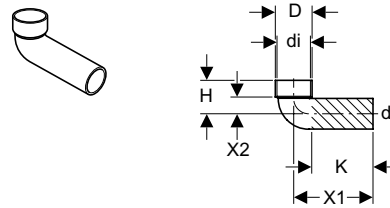
- Protection cap

Ordering Information

Article no.	dØ [mm]	diØ [mm]	D [cm]	H [cm]	h [cm]	K* [cm]
367.885.16.1	110	120	13,2	38	33	26

* K indicates the maximum shortening length

Geberit HDPE connector bend 88.5° with socket



Application Purpose

- For all drainage pipes
- For appliances with vertical outlet

Characteristics

- UV-resistant

Product Details

Product material	HDPE
Elbow	88.5°

Scope Of Delivery

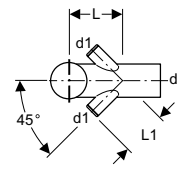
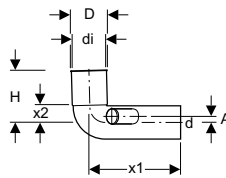
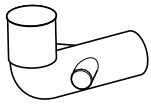
- Protection cap

Ordering Information

Article no.	dØ [mm]	diØ [mm]	D [cm]	X1 [cm]	X2 [cm]	H [cm]	K* [cm]
367.880.16.1	110	120	13,2	30	6	12	22

* K indicates the maximum shortening length

Geberit HDPE connector bend 88.5° with coupling and push-on seal, with raised connections on the side



Application Purpose

- For all drainage pipes
- For appliances with vertical outlet

Characteristics

- UV-resistant
- Raised connections on the side

Product Details

Product material	HDPE
Elbow	88.5°

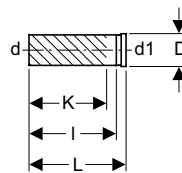
Scope Of Delivery

- Protection cap

Ordering Information

Article no.	dØ [mm]	d1Ø [mm]	diØ [mm]	D [cm]	A [cm]	X1 [cm]	X2 [cm]	H [cm]	L [cm]	L1 [cm]
367.888.16.1	110	50	110	11,6	2	30	6	17	17,5	14

Geberit HDPE straight connector with ring seal socket



Application Purpose

- For all drainage pipes
- For push-on seal
- For appliances with horizontal outlet

Characteristics

- UV-resistant

Product Details

Product material	HDPE
------------------	------

Scope Of Delivery

- Lip seal EPDM
- Protection cap

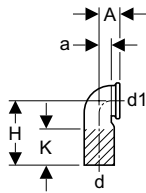
Ordering Information

Article no.	dØ [mm]	d1Ø [mm]	D [cm]	L [cm]	I [cm]	K* [cm]
366.887.16.1	90	90	11,2	31	27,5	24
367.887.16.1	110	90	11,2	34,5	31,5	28

* K indicates the maximum shortening length



Geberit HDPE connector bend 90° with ring seal socket



Application Purpose

- For all drainage pipes
- For appliances with horizontal outlet

Characteristics

- UV-resistant

Product Details

Product material	HDPE
Elbow	90°

Scope Of Delivery

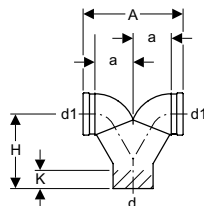
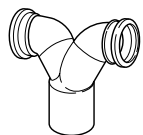
- Lip seal EPDM
- Protection cap

Ordering Information

Article no.	dØ [mm]	d1Ø [mm]	A [cm]	a [cm]	H [cm]	K* [cm]
366.925.16.1	90	90	7,5	4,5	22,5	13
367.925.16.1	110	90	7,5	4,5	22,5	13
367.792.16.1	110	110	7,5	4,5	22,5	13

* K indicates the maximum shortening length

Geberit HDPE double bend 2 x 90° with ring seal sockets



Application Purpose

- For all drainage pipes
- For appliances with horizontal outlet

Characteristics

- UV-resistant

Product Details

Product material	HDPE
Elbow	90°

Scope Of Delivery

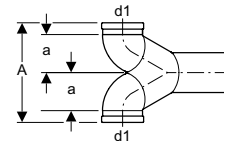
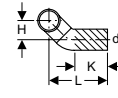
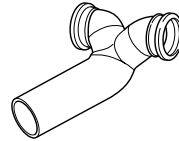
- Lip seals EPDM
- Protection cap

Ordering Information

Article no.	dØ [mm]	d1Ø [mm]	A [cm]	a [cm]	H [cm]	K* [cm]
367.923.16.1	110	90	27,5	10,5	32,5	19
367.903.16.1	110	110	28,5	11	20,5	5

* K indicates the maximum shortening length

Geberit HDPE double connection bend 2 x 90° with ring seal sockets, offset



Application Purpose

- For all drainage pipes
- For appliances with horizontal outlet

Characteristics

- UV-resistant
- Offset

Product Details

Product material	HDPE
Elbow	90°

Scope Of Delivery

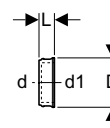
- Lip seals EPDM
- Protection cap

Ordering Information

Article no.	dØ [mm]	d1Ø [mm]	A [cm]	a [cm]	H [cm]	L [cm]	K* [cm]
367.485.16.1	110	90	27,5	10,5	10	34	12

* K indicates the maximum shortening length

Geberit HDPE connection ring seal socket with seal dia. 90/110 mm



Application Purpose

- For all drainage pipes
- For appliances with horizontal outlet
- For WC element Kombifix

Characteristics

- UV-resistant

Product Details

Product material	HDPE
------------------	------

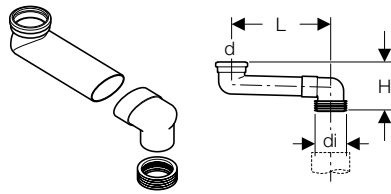
Scope Of Delivery

- Lip seal EPDM
- Protection cap

Ordering Information

Article no.	dØ [mm]	d1Ø [mm]	D [cm]	L [cm]
366.941.16.1	90	90	11,1	4
367.941.16.1	110	90	11,1	4

Geberit PVC S-bend dia. 90/110 mm



Application Purpose

- For all drainage pipes
- For converting floor standing WC to wall-hung WC installation

Product Details

Product material	PVC
------------------	-----

Scope Of Delivery

- Lip seal EPDM
- Rubber seal EPDM
- Adhesive PVC-U

Ordering Information

Article no.	dØ [mm]	diØ [mm]	H [cm]	L [cm]
388.350.29.1	90	100 - 105,6	16,7	14,5 - 34,5

Protecting caps for weathering slates

Geberit HDPE protecting cap for weathering slates



Application Purpose

- For all drainage pipes
- For enclosing ventilation pipes

Characteristics

- UV-resistant

Product Details

Product material	HDPE
------------------	------

Scope Of Delivery

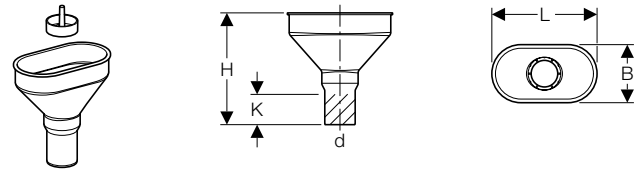
- Lip seal EPDM

Ordering Information

Article no.	dØ [mm]	D [cm]	H [cm]
364.989.16.1	63	10	7
365.989.16.1	75	12	9
366.989.16.1	90	14	10
367.989.16.1	110	17	11
368.989.16.1	125	18	12
369.989.16.1	160	23	16

Funnel

Geberit funnel oval



Scope Of Delivery

- Screen

Ordering Information

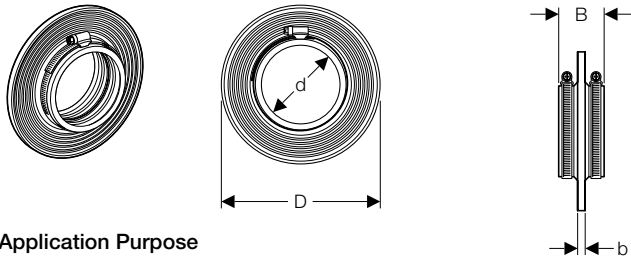
Article no.	dØ [mm]	B [cm]	H [cm]	L [cm]	K [cm]
352.377.16.1	40	9,5	18,5	17,5	5
352.379.16.1	50	9,5	18,5	17,5	5

* K indicates the maximum shortening length



Sealings for passages through wall and ceilings

Geberit puddle flange



Application Purpose

- For covering pipe openings in walls, ceilings and floors
- For protection against moisture
- For Geberit HDPE und Geberit Silent-db20

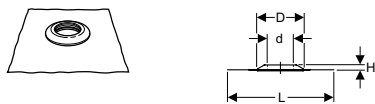
Scope Of Delivery

- 2 stainless steel clamping bands

Ordering Information

Article no.	dØ [mm]	D [cm]	B [cm]	b [cm]
348.227.00.1	110	21	6	1
348.228.00.1	125	22,5	6	1
348.229.00.1	160	26	6	1

Geberit moisture sealing with Resistit foil



Application Purpose

- For covering pipe openings in walls, ceilings and floors
- For protection against moisture
- Area of application up to 1 m water level
- For bonded connections
- For connecting elastical bitumen sealings (e.g. SBS-Bitumen)
- For hot bitumen and sealing paint
- Resistit for connection with bitumen
- Not designed for connecting with flexible bitumen seals such as Bitum APP

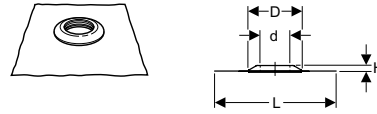
Characteristics

- Seal, EPDM
- Resistit contact foil, EPDM

Ordering Information

Article no.	dØ [mm]	D [cm]	H [cm]	L [cm]
361.673.00.1	50	13,5	2,5	50
363.673.00.1	56	13,5	2,5	50
365.673.00.1	75	19,5	2,5	50
366.673.00.1	90	19,5	2,5	50
367.673.00.1	110	19,5	2,5	50
368.673.00.1	125	21	2,5	50

Geberit moisture sealing with Sarnafil foil PVC



Application Purpose

- For covering pipe openings in walls, ceilings and floors
- For protection against moisture
- Area of application up to 1 m water level
- For welding with PVC sheet

Characteristics

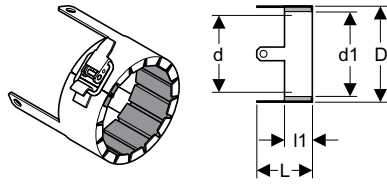
- Sarnafil contact foil, PVC
- Seal, EPDM

Ordering Information

Article no.	dØ [mm]	D [cm]	H [cm]	L [cm]
361.674.00.1	50	13,5	2,5	48
363.674.00.1	56	13,5	2,5	48
365.674.00.1	75	19,5	2,5	48
366.674.00.1	90	19,5	2,5	48
367.674.00.1	110	19,5	2,5	48
368.674.00.1	125	21	2,5	48

Fire protection sleeve

Fire protection sleeve RS90 Plus DIN



Application Purpose

- For Geberit HDPE und Geberit Silent-db20
- For pipe openings in walls or ceilings
- For protection against fire spread
- For waste water pipelines of dia. 40 - 200 mm
- For subsequent installation on/in ceiling, brick- or drywalls
- For direct installation on/in ceiling, brick- or drywalls
- Cannot be used for installation in bends which are already partially built into the ceiling plates

Characteristics

- Fire resistance S 90, R 90, EI 90
- Sound-absorbing

Product Details

Product material	Steel
------------------	-------

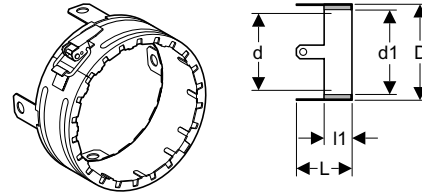
Scope Of Delivery

- Wedge type bolts
- Insulation against solid-borne noise
- Information plate for identification
- Adhesive tape

Ordering Information

Article no.	dØ [mm]	d1Ø [mm]	D [cm]	L [cm]	l1 [cm]
348.200.00.1	32 - 56	66	7,8	8,5	5
348.201.00.1	63 / 75	83	10,2	8,5	5
348.202.00.1	90	95	11,6	8,5	5
348.203.00.1	110	116	14,1	8,5	5
348.204.00.1	125 / 135	142	16,7	10,5	7
348.205.00.1	160	170	19,8	11,5	8
348.206.00.1	200	208	25,1	12,5	9

Geberit fire protection sleeve RS90 Plus EN



Application Purpose

- For protection against fire spread
- For pipe openings in walls or ceilings
- For waste water pipelines of dia. 40 - 200 mm
- For subsequent installation on/in ceiling, brick- or drywalls
- For direct installation on/in ceiling, brick- or drywalls
- Not suitable for passing other parts or aids through

Characteristics

- Approval in acc. with EN
- Fire resistance S 90, R 90, EI 90
- Sound-absorbing

Product Details

Product material	Steel
------------------	-------

Scope Of Delivery

- Concrete screws
- Insulation against solid-borne noise
- Adhesive tape

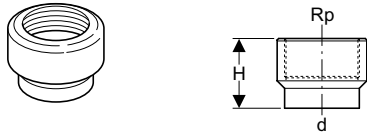
Ordering Information

Article no.	dØ [mm]	d1Ø [mm]	D [cm]	L [cm]	l1 [cm]
348.300.00.1	40 - 56	63	7,7	8,5	5
348.301.00.1	63 / 75	83	10,2	8,5	5
348.302.00.1	90	98	12,4	8,5	5
348.303.00.1	110	118	14,6	8,5	5
348.304.00.1	125 / 135	142	17,1	10,5	7
348.305.00.1	160	169	20,7	11,5	8
348.306.00.1	200	207	25,7	12,5	9



Adapters for different pipe material

Geberit HDPE adapter with female thread



Application Purpose

- For all drainage pipes

Characteristics

- UV-resistant
- With support ring, stainless steel

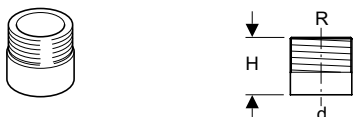
Product Details

Product material	HDPE
------------------	------

Ordering Information

Article no.	dØ [mm]	Rp ["]	H [cm]
360.719.16.1	40	1/2	5,5
360.720.16.1	40	3/4	5,5
360.721.16.1	40	1	5,5
361.719.16.1	50	1/2	6
361.720.16.1	50	3/4	6
361.721.16.1	50	1	6
361.722.16.1	50	1 1/4	6
361.723.16.1	50	1 1/2	6
363.724.16.1	56	2	6,5
364.724.16.1	63	2	7
365.725.16.1	75	2 1/2	7

Geberit HDPE adapter with male thread



Application Purpose

- For all drainage pipes

Characteristics

- UV-resistant
- With support ring, stainless steel

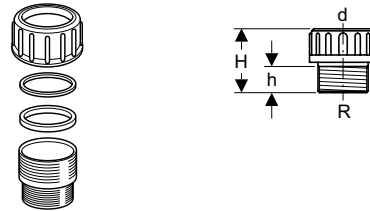
Product Details

Product material	HDPE
------------------	------

Ordering Information

Article no.	dØ [mm]	R ["]	H [cm]
361.726.16.1	50	1 1/4	6
361.727.16.1	50	1 1/2	6
363.728.16.1	56	2	6,5
364.728.16.1	63	2	6,5
365.729.16.1	75	2 1/2	7

Geberit HDPE adapter connection piece with male thread and screw connection



Application Purpose

- For all drainage pipes

Characteristics

- Male thread

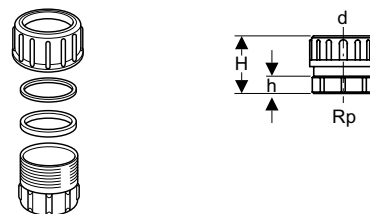
Scope Of Delivery

- Union nut PP
- Slip ring PP
- Seal EPDM
- Protective cap

Ordering Information

Article no.	dØ [mm]	R ["]	H [cm]	h [cm]
359.309.00.1	50	1 1/2	6,5	2,7
359.311.00.1	56	2	6,5	2,7

Geberit HDPE adapter connection piece with female thread and screw connection



Application Purpose

- For all drainage pipes

Characteristics

- Female thread

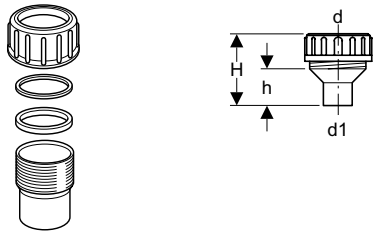
Scope Of Delivery

- Union nut PP
- Slip ring PP
- Seal EPDM
- Protective cap

Ordering Information

Article no.	dØ [mm]	Rp ["]	H [cm]	h [cm]
359.313.00.1	56	2	6	1,8

Geberit HDPE adapter connection piece with screw connection, for soldering, brass



Application Purpose

- For all drainage pipes
- For soft and hard-soldering

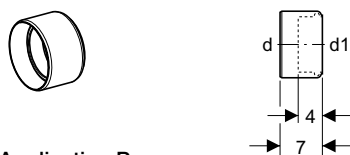
Scope Of Delivery

- Union nut PP
- Slip ring PP
- Seal EPDM

Ordering Information

Article no.	dØ [mm]	d1Ø [mm]	H [cm]	h [cm]
359.330.00.1	56	54	8,3	3,5

Geberit PVC adapter socket reduced



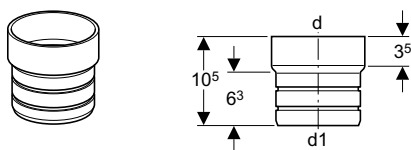
Application Purpose

- For stand WC
- For plugging in a PVC sleeve dia. 110 mm

Ordering Information

Article no.	dØ [mm]	d1Ø [mm]
152.465.00.1	110	90

Geberit adapter HDPE/PVC



Application Purpose

- For all drainage pipes

Characteristics

- UV-resistant

Product Details

Product material	HDPE
------------------	------

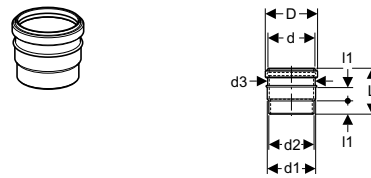
Scope Of Delivery

- 2 round cord rings, EPDM

Ordering Information

Article no.	dØ [mm]	d1Ø [mm]	Colour
359.461.16.1	110	99	black

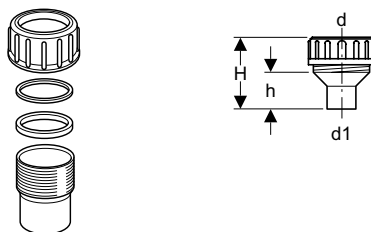
Geberit adapter piece PVC



Ordering Information

Article no.	dØ [mm]	d1Ø [mm]	d2Ø [mm]	d3Ø [mm]	D [cm]	L [cm]	l1 [cm]
359.144.11.1	90	100	94	98	10,8	9,5	2,8

Geberit HDPE adapter connection piece for gluing PVC, with screw connection



Application Purpose

- For all drainage pipes
- For bonding

Product Details

Product material	PVC
------------------	-----

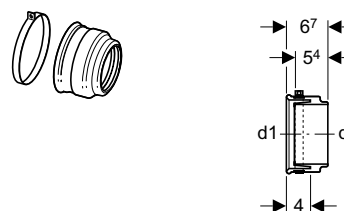
Scope Of Delivery

- Union nut PP
- Slip ring PP
- Seal EPDM

Ordering Information

Article no.	dØ [mm]	d1Ø [mm]	H [cm]	h [cm]
359.421.00.1	56	50	8	4
359.423.00.1	56	63	7,8	4

Geberit adapter piece to cast-iron



Product Details

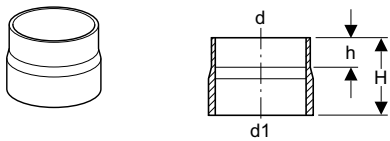
Product material	EPDM
------------------	------

Ordering Information

Article no.	dØ [mm]	d1Ø [mm]
367.009.16.1	90	110



Geberit adapter connection piece HDPE / cast iron



Application Purpose

- For all drainage pipes

Characteristics

- UV-resistant
- With support ring, stainless steel

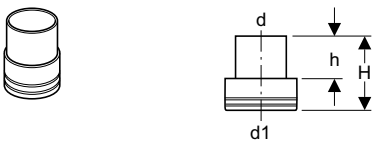
Product Details

Product material	HDPE
------------------	------

Ordering Information

Article no.	dØ [mm]	d1Ø [mm]	H [cm]	h [cm]
370.738.16.1	200	212	16	8
371.738.16.1	250	274	16	11,5
372.738.16.1	315	326	16	11,5

Geberit PE adapter connection piece for ceramic materials



Application Purpose

- For all drainage pipes
- For plugging into ceramic sleeves
- For connecting pipe ends with ceramic clips
- For seals and clamping connectors for ceramic materials

Characteristics

- UV-resistant

Product Details

Product material	HDPE
------------------	------

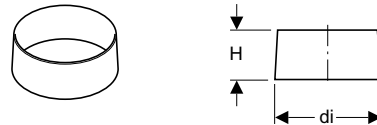
Scope Of Delivery

- Seal EPDM

Ordering Information

Article no.	dØ [mm]	d1Ø [mm]	H [cm]	h [cm]	Colour
367.739.16.1	110	132	15,2	7	black
368.739.16.1	125	159	15,5	7	black
369.739.16.1	160	186	15,5	7	black
370.739.16.1	200	242	20	13	black
371.739.16.1	250	298	20	13	black
372.739.16.1	315	352	20	12	black

Geberit HDPE support ring



Application Purpose

- For all drainage pipes
- For supporting pipes and fittings HDPE, when used with clamping connector

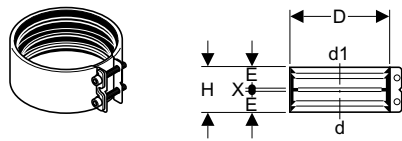
Product Details

Product material	CrNi steel 1.4301 (DIN EN 10088)
------------------	----------------------------------

Ordering Information

Article no.	dØ [mm]	diØ [mm]	H [cm]
359.454.00.1	50	44	4
359.455.00.1	56	50	4
359.456.00.1	63	57	4
359.457.00.1	75	69	4
359.458.00.1	90	83	4
359.459.00.1	110	101,4	4
359.462.00.1	125	115,2	4
359.463.00.1	140	129,2	4
359.464.00.1	160	147,6	4

Geberit HDPE adapter clamping connector



Application Purpose

- For all drainage pipes
- For connection pipes and fittings made of the same or different material

Product Details

Product material	Stainless steel
------------------	-----------------

Scope Of Delivery

- 2 screws
- Rubber seal EPDM

Ordering Information

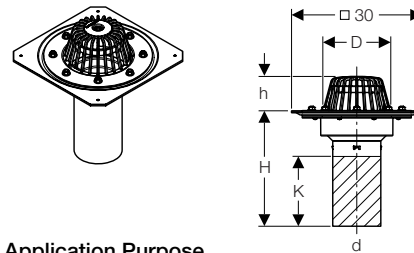
Article no.	dØ [mm]	d1Ø [mm]	D [cm]	E [cm]	X [cm]	H [cm]
359.424.00.1	48 - 50	48 - 50	6,5	2,6	0,4	5,6
359.425.00.1	54 - 56	54 - 56	7,1	2,6	0,4	5,6
359.426.00.1	56 - 58	56 - 58	7,3	2,6	0,4	5,6
359.427.00.1	54 - 56	68	8,3	2,6	0,4	5,6
359.428.00.1	63 - 64	60,3	7,8	2,6	0,4	5,6
359.429.00.1	63 - 64	63 - 64	7,9	2,6	0,4	5,6
359.430.00.1	63 - 64	68	8,3	2,6	0,4	5,6
359.431.00.1	68	68	8,3	2,6	0,4	5,6
359.432.00.1	75 - 76	68	9,1	2,6	0,4	5,6
359.433.00.1	75 - 76	75 - 76	9,1	2,6	0,4	5,6
359.434.00.1	75 - 76	78	9,3	2,6	0,4	5,6
359.435.00.1	75 - 76	83 - 84	9,9	2,6	0,4	5,6
359.436.00.1	75 - 76	89 - 90	10,5	2,6	0,4	5,6
359.437.00.1	89 - 90	83 - 84	10,5	2,6	0,4	5,6
359.438.00.1	89 - 90	89 - 90	10,5	2,6	0,4	5,6
359.439.00.1	89 - 90	96	11,1	2,6	0,4	5,6
359.440.00.1	108 - 110	106	12,5	2,6	0,4	5,6
359.441.00.1	108 - 110	108 - 110	12,5	2,6	0,4	5,6
359.442.00.1	108 - 110	114 - 116	13,1	3,2	0,4	6,8
359.443.00.1	125	125	14	3,2	0,4	6,8
359.444.00.1	125	131 - 135	15	3,2	0,4	6,8
359.445.00.1	125	140 - 141	15,6	3,2	0,4	6,8
359.446.00.1	135	135	15	3,2	0,4	6,8
312.140.00.1	135	140 - 141	15,6	3,2	0,4	6,8
359.447.00.1	140 - 141	140 - 141	15,6	3,2	0,4	6,8
359.448.00.1	159 - 160	152	17,5	3,2	0,4	6,8
359.449.00.1	159 - 160	159 - 160	17,5	3,2	0,4	6,8
359.450.00.1	159 - 160	168	18,3	3,2	0,4	6,8
359.451.00.1	210	210	22,5	3,2	0,4	6,8
359.452.00.1	274	274	28,9	6,8	0,4	14

Note:

To be used with Geberit HDPE support ring.

Conventional roof drainage

Geberit conventional roof outlet, with fastening flange



Application Purpose

- For connecting plastic roof foils
- Must not be used for flange-mounting fleece-laminated roof foils (e.g. Rehpanol fk)
- Must not be used for bitumen roof foils

Characteristics

- Maintenance-free clamping flange connection

Product Details

Drainage capacity max.	7 l/s
------------------------	-------

Scope Of Delivery

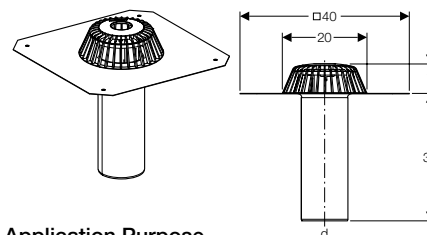
- Foil fastening flange with gasket and nuts

Ordering Information

Article no.	dØ [mm]	D [cm]	H [cm]	h [cm]	K [cm]
359.013.00.1	110	16	26,5	8	14

Geberit roof outlet for bitumen

new



Application Purpose

- For connecting with bitumen roof foils
- For collecting and draining of rainwater on roofs
- For conventional rainwater drainage

Characteristics

- Vertical outlet
- Straight connector made of chrome nickel steel 1.4301
- Outlet pipe cuttable

Product Details

Maximum head of water	35 mm
Drainage capacity max.	6 (d110) / 5,5 (d90) l/s

Scope Of Delivery

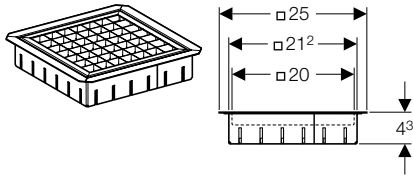
- Outlet grating made of PP
- Base unit with contact sheet made of chrome nickel steel 1.4301
- Protective cap

Ordering Information

Article no.	Description	dØ [mm]
359.037.00.1	Geberit roof outlet for bitumen, d110	110
359.038.00.1	Geberit roof outlet for bitumen, d90	90



Geberit supplementary set for roof outlet, suitable for promenade decks new



Application Purpose

- For collecting and draining of rainwater on roofs
- For conventional rainwater drainage
- For use with Geberit roof outlet for bitumen roof foil

Characteristics

- Load bearing capacity up to 150 kg

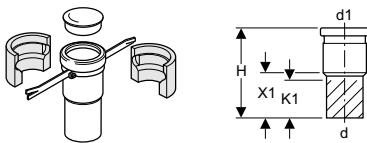
Scope Of Delivery

- Grating made of chrome nickel steel 1.4301
- Grating frame made of chrome nickel steel 1.4301

Ordering Information

Article no.	Description
359.039.00.1	Geberit supplementary set for roof outlet, suitable for promenade decks

Geberit vertical connection set



Application Purpose

- For outlet element

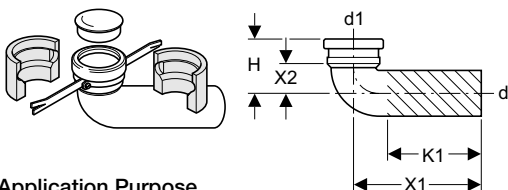
Scope Of Delivery

- Anti-condensation insulation
- Fastening material
- Protection cap

Ordering Information

Article no.	dØ [mm]	d1Ø [mm]	X1 [cm]	H [cm]	K1 [cm]
366.979.00.1	90	90	14	26,5	11
367.979.00.1	110	110	14	26,5	11

Geberit horizontal connection set



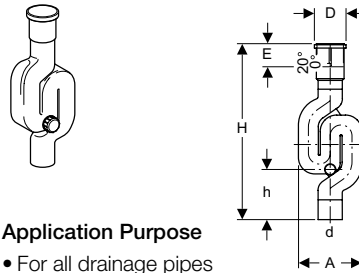
Application Purpose

- For outlet element

Ordering Information

Article no.	dØ [mm]	d1Ø [mm]	X1 [cm]	X2 [cm]	H [cm]	K1 [cm]
366.980.00.1	90	90	27	5,5	9,5	20
367.980.00.1	110	110	30	8	13	22

Geberit HDPE trap with expansion socket and round inspection opening



Application Purpose

- For all drainage pipes

Characteristics

- UV-resistant
- With expansion socket
- With cleaning opening

Product Details

Product material	HDPE
Depth of water seal	70 mm

Scope Of Delivery

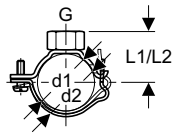
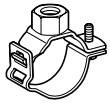
- Sealing cap PP
- Seal EPDM
- Lip seal EPDM
- Protection cap

Ordering Information

Article no.	dØ [mm]	D [cm]	A [cm]	E [cm]	H [cm]	h [cm]
365.813.16.1	75	10,5	19,8	7 - 10,5	65,5	16,7
367.813.16.1	110	14,4	28,8	7 - 10,5	80	22,8

Fastenings

Geberit adjustable pipe bracket, with threaded nut G1/2, for fixed-point welding strip



Application Purpose

- For fastening pipes on ceilings and for vertical fastening on walls
- For slide fastening of pipes
- For anchor-point fastening in combination with electrofusion tapes
- For fastening with threaded rod

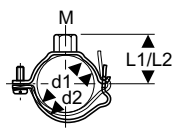
Characteristics

- Female thread
- Galvanized
- Adjustable

Ordering Information

Article no.	d1Ø [mm]	G ["]	d2Ø [mm]	L1 [cm]	L2 [cm]
360.841.00.2	40	1/2	48	3,5	3,9
361.841.00.2	50	1/2	58	4	4,4
363.841.00.2	56	1/2	64	4,3	4,7
364.841.00.2	63	1/2	71	4,7	5,1
365.841.00.2	75	1/2	83	5,3	5,7
366.841.00.2	90	1/2	98	6	6,4
367.841.00.2	110	1/2	118	7	7,4
368.841.00.2	125	1/2	133	7,8	8,2
369.841.00.2	160	1/2	168	9,5	9,9

Geberit pipe bracket Kombi with coupling M10, adjustable



Application Purpose

- For fastening pipes on ceilings and for vertical fastening on walls
- For slide fastening of pipes
- For fastening with threaded rods
- For anchor-point fastening in combination with electrofusion tapes

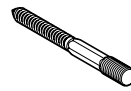
Characteristics

- Female thread
- Galvanized
- Adjustable

Ordering Information

Article no.	d1Ø [mm]	M [mm]	d2Ø [mm]	L1 [cm]	L2 [cm]
360.843.00.2	40	10	48	3,5	3,9
361.843.00.2	50	10	58	4	4,4
363.843.00.2	56	10	64	4,3	4,7
364.843.00.2	63	10	71	4,7	5,1
365.843.00.2	75	10	83	5,3	5,7
366.843.00.2	90	10	98	6	6,4
367.843.00.2	110	10	118	7	7,4
368.843.00.2	125	10	133	7,8	8,2
369.843.00.2	160	10	168	9,5	9,9

Geberit pin screw M10



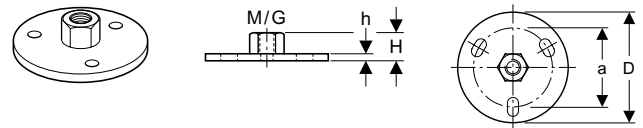
Characteristics

- Male thread

Ordering Information

Article no.	Description	L [cm]
362.833.00.1	Geberit pin screw M10	10

Geberit mounting plate round 3-hole, with coupling M10



Application Purpose

- For slide fastening
- For fastening pipes on ceilings and for vertical fastening on walls
- For attaching pipe brackets to the building structure
- For attaching support rails to the building structure

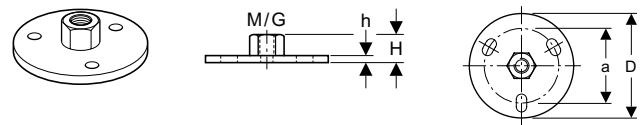
Characteristics

- Female thread
- 3 fastening points

Ordering Information

Article no.	M [mm]	D [cm]	a [cm]	H [cm]	h [cm]
362.837.26.1	10	7	5	1,6	0,4

Geberit mounting plate round 3-hole, with coupling G1/2"



Application Purpose

- For fastening pipes on ceilings and for vertical fastening on walls
- For attaching pipe brackets to the building structure
- For anchor-point and slide fastening

Characteristics

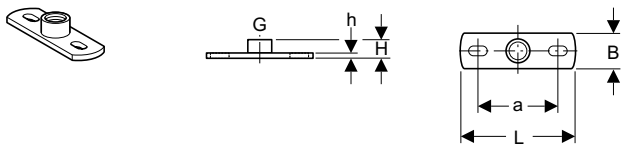
- Female thread
- 3 fastening points

Ordering Information

Article no.	G ["]	D [cm]	a [cm]	H [cm]	h [cm]
362.839.26.1	1/2	7	5	1,9	0,4



Geberit mounting plate with threaded nut 1/2"



Application Purpose

- For anchor-point and slide fastening
- For fastening pipes on ceilings and for vertical fastening on walls
- For attaching pipe brackets to the building structure

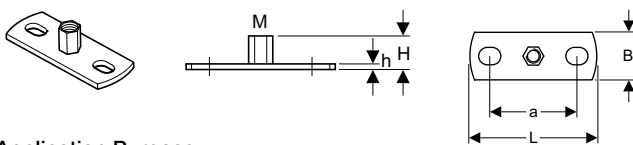
Characteristics

- Female thread
- 2 fastening points

Ordering Information

Article no.	G ["]	a [cm]	B [cm]	H [cm]	h [cm]	L [cm]
362.826.26.1	1/2	9	4	2,1	0,6	12

Geberit mounting plate angular 2-hole, with socket M8/M10



Application Purpose

- For slide fastening
- For attaching support rails to the building structure

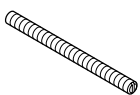
Characteristics

- Galvanized
- Female thread
- 2 fastening points

Ordering Information

Article no.	M [mm]	a [cm]	B [cm]	H [cm]	h [cm]	L [cm]
362.848.26.1	8 / 10	5,4	3	1,9	0,3	8

Geberit threaded rod



Application Purpose

- For fastening of support rails on mounting plate
- For fastening pipes on mounting plate

Characteristics

- Male thread

Scope Of Delivery

- PVC sleeve

Ordering Information

Article no.	M [mm]	L [cm]
362.836.00.1	10	50

Geberit plastic strip for pipe bracket



Application Purpose

- For guide brackets in conjunction with pipe brackets

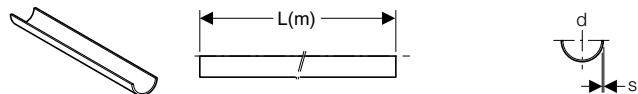
Product Details

Product material	PE-LD
------------------	-------

Ordering Information

Article no.	Description
362.846.00.1	Geberit plastic strip for pipe bracket, dia. 40 - 160 mm
370.846.00.1	Geberit plastic strip for pipe bracket, dia. 200 - 315 mm

Geberit support shell galvanized and coated



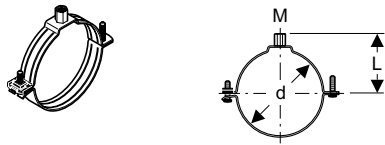
Characteristics

- Coated
- Galvanized

Ordering Information

Article no.	dØ [mm]	s [mm]	L (m) [m]
360.850.00.1	40	0,75	3
361.850.00.1	50	0,75	3
363.850.00.1	56	0,75	3
364.850.00.1	63	0,75	3
365.850.00.1	75	0,75	3
366.850.00.1	90	0,75	3
367.850.00.1	110	0,75	3
368.850.00.1	125	0,75	3

Geberit pipe bracket Super, with threaded nut M8/M10



Application Purpose

- For fastening pipes on ceilings and for vertical fastening on walls
- For fastening with threaded rods
- Not suitable for the slide fastening of pipes

Characteristics

- Female thread
- Galvanized
- Threaded fastening M8/M10

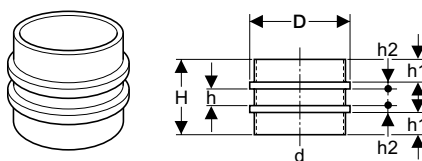
Ordering Information

Article no.	dØ [mm]	M [mm]	L [cm]
360.832.00.2	40	8 / 10	4,3
361.832.00.2	50	8 / 10	4,8
363.832.00.2	56	8 / 10	5,1
364.832.00.2	63	8 / 10	5,5
365.832.00.2	75	8 / 10	6,1
366.832.00.2	90	8 / 10	6,8
367.832.00.2	110	8 / 10	7,8
368.832.00.2	125	8 / 10	8,6
369.832.00.2	160	8 / 10	10,3

Note:

Not to be used as anchor bracket.

Geberit double flange bushing



Application Purpose

- For anchor brackets

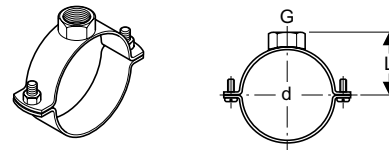
Product Details

Product material	PE
------------------	----

Ordering Information

Article no.	dØ [mm]	D [cm]	H [cm]	h [cm]	h1 [cm]	h2 [cm]	Colour
370.751.16.1	200	21,3	19,1	4,1	6	1,5	black
371.751.16.1	250	26,2	20,1	4,1	6	2	black
372.751.16.1	315	32,6	20,1	4,1	6	2	black

Geberit bracket, with threaded nut 1"



Application Purpose

- For fastening pipes on ceilings and for vertical fastening on walls
- For guide brackets in conjunction with plastic insert strips
- For anchor-point fastening of pipes in conjunction with electrofusion sleeve couplings or double flange bushings
- For fastening with threaded rod

Characteristics

- Female thread
- Galvanized
- Pipe bracket width 4 cm

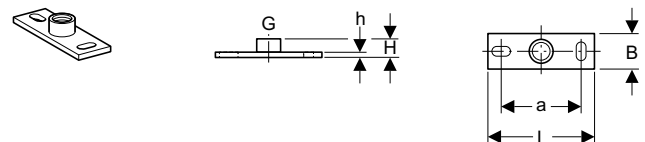
Product Details

Product material	Steel
------------------	-------

Ordering Information

Article no.	dØ [mm]	G ["]	L [cm]
370.840.00.1	200	1	14,8
371.840.00.1	250	1	17,3
372.840.00.1	315	1	20,5

Geberit mounting plate angular 2-hole, with coupling G1"



Application Purpose

- For fastening pipes on the building structure
- For fastening pipes on ceilings and for vertical fastening on walls
- For anchor-point and slide fastening

Characteristics

- Galvanized
- Female thread
- 2 fastening points

Product Details

Product material	Steel
------------------	-------

Ordering Information

Article no.	G ["]	a [cm]	B [cm]	H [cm]	h [cm]	L [cm]	Colour
362.828.26.1	1	9	4	2,6	0,6	12	galvanized