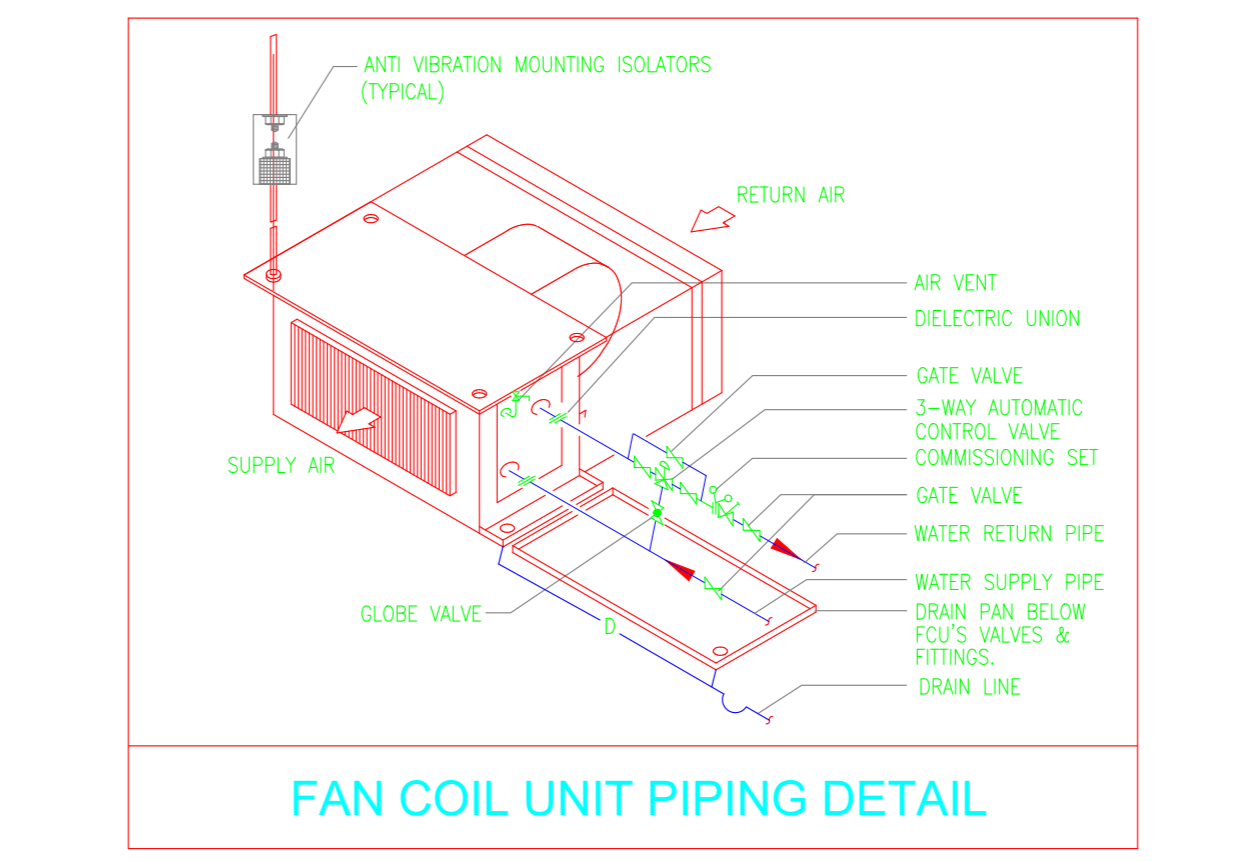
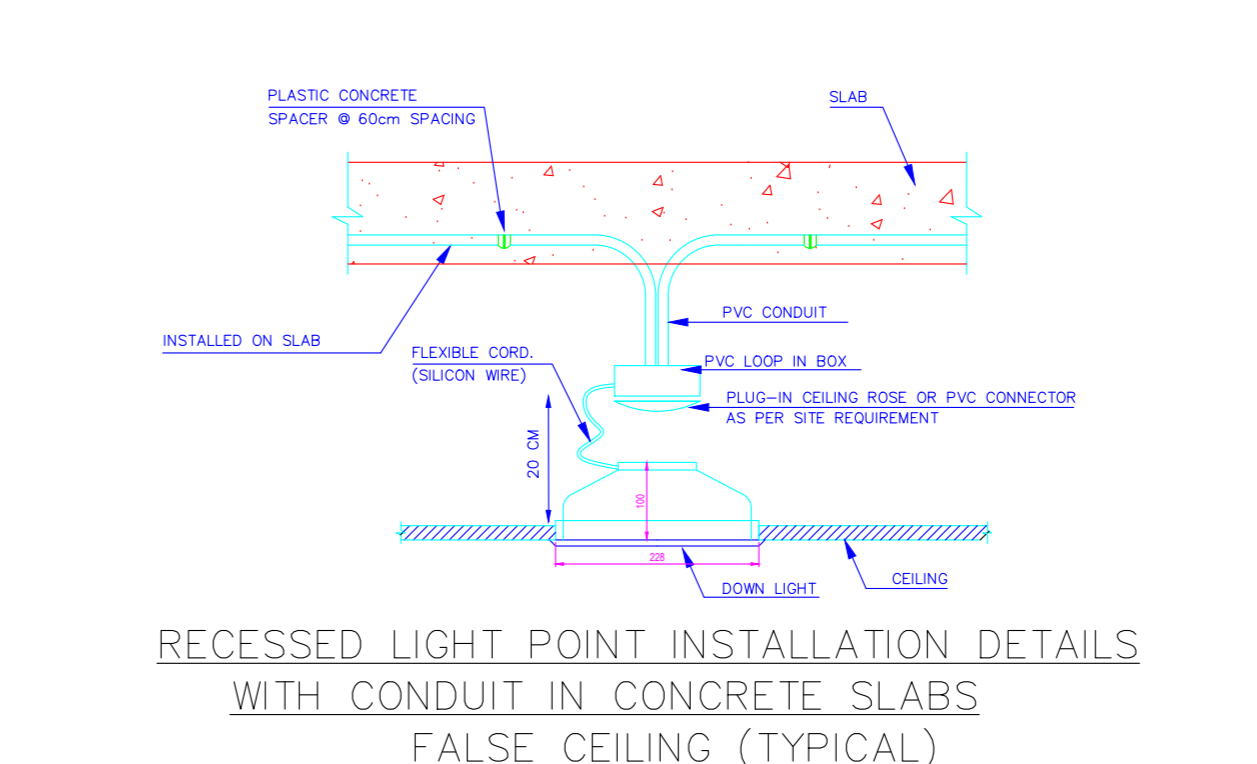
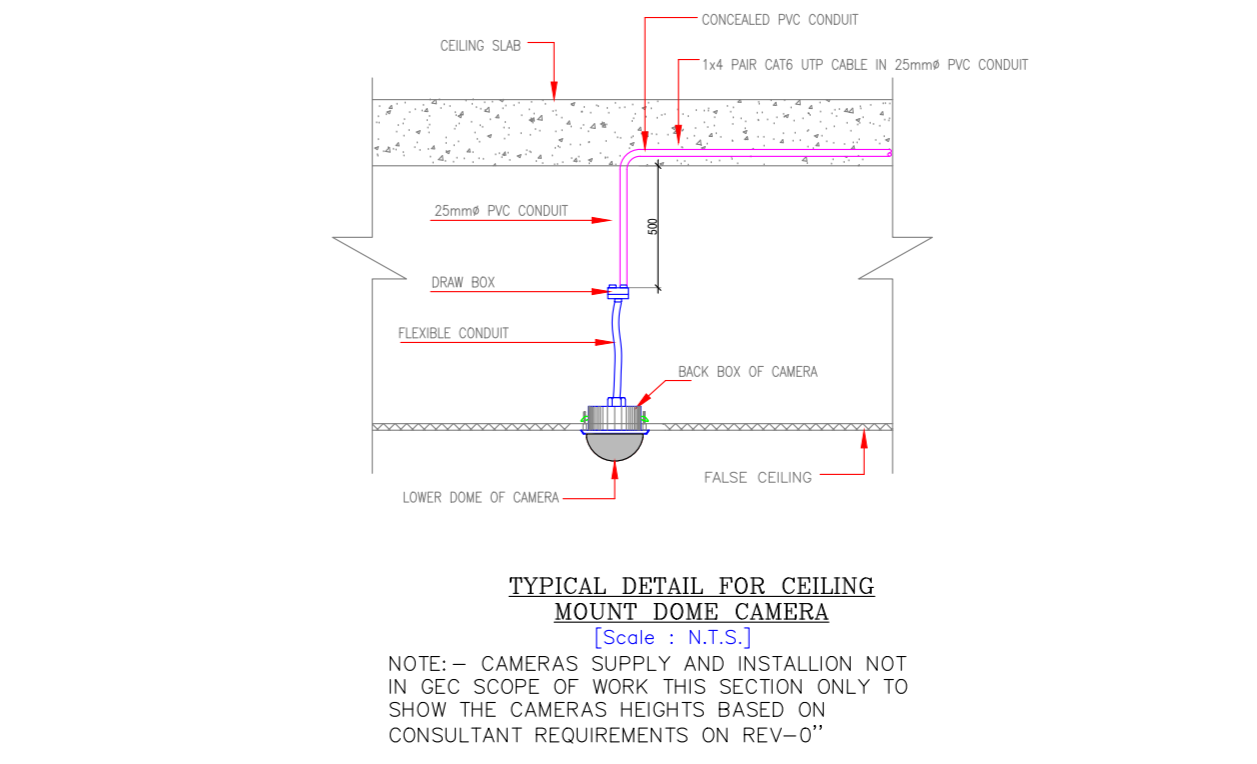
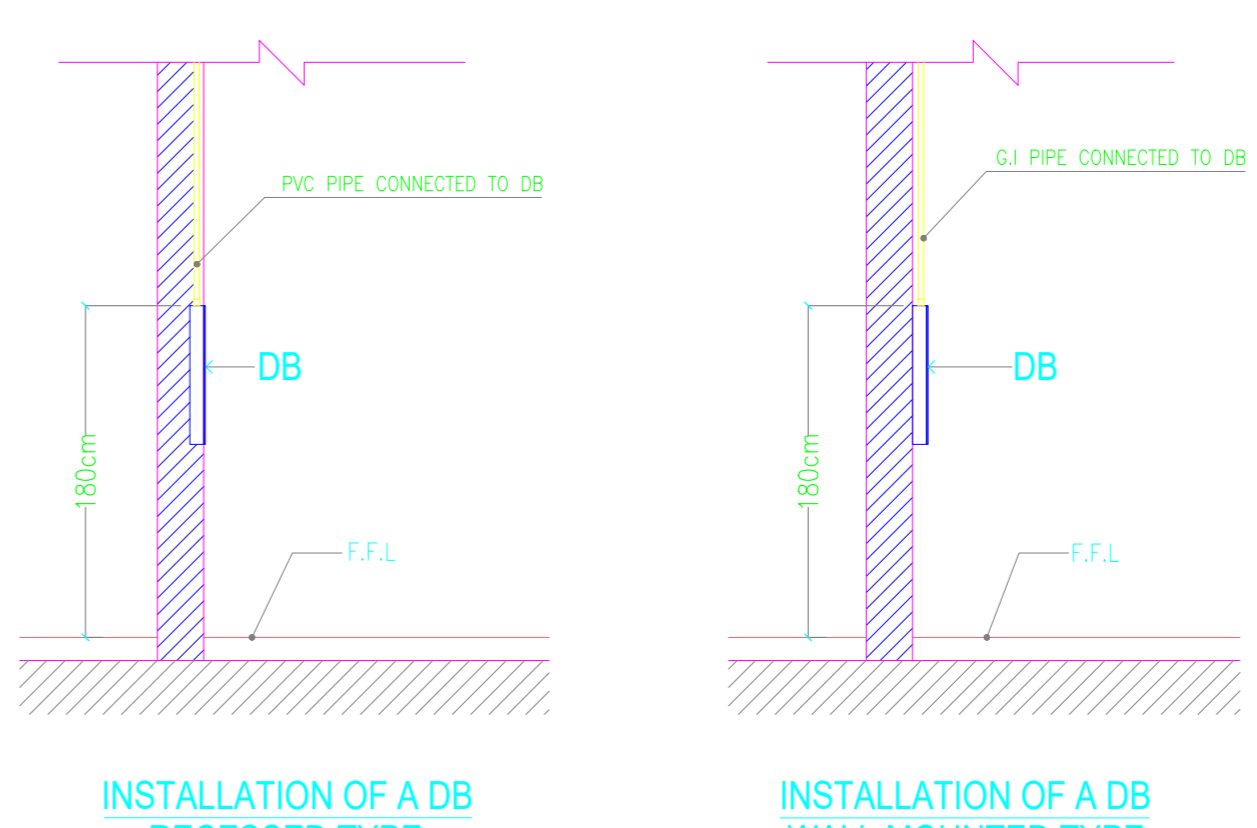
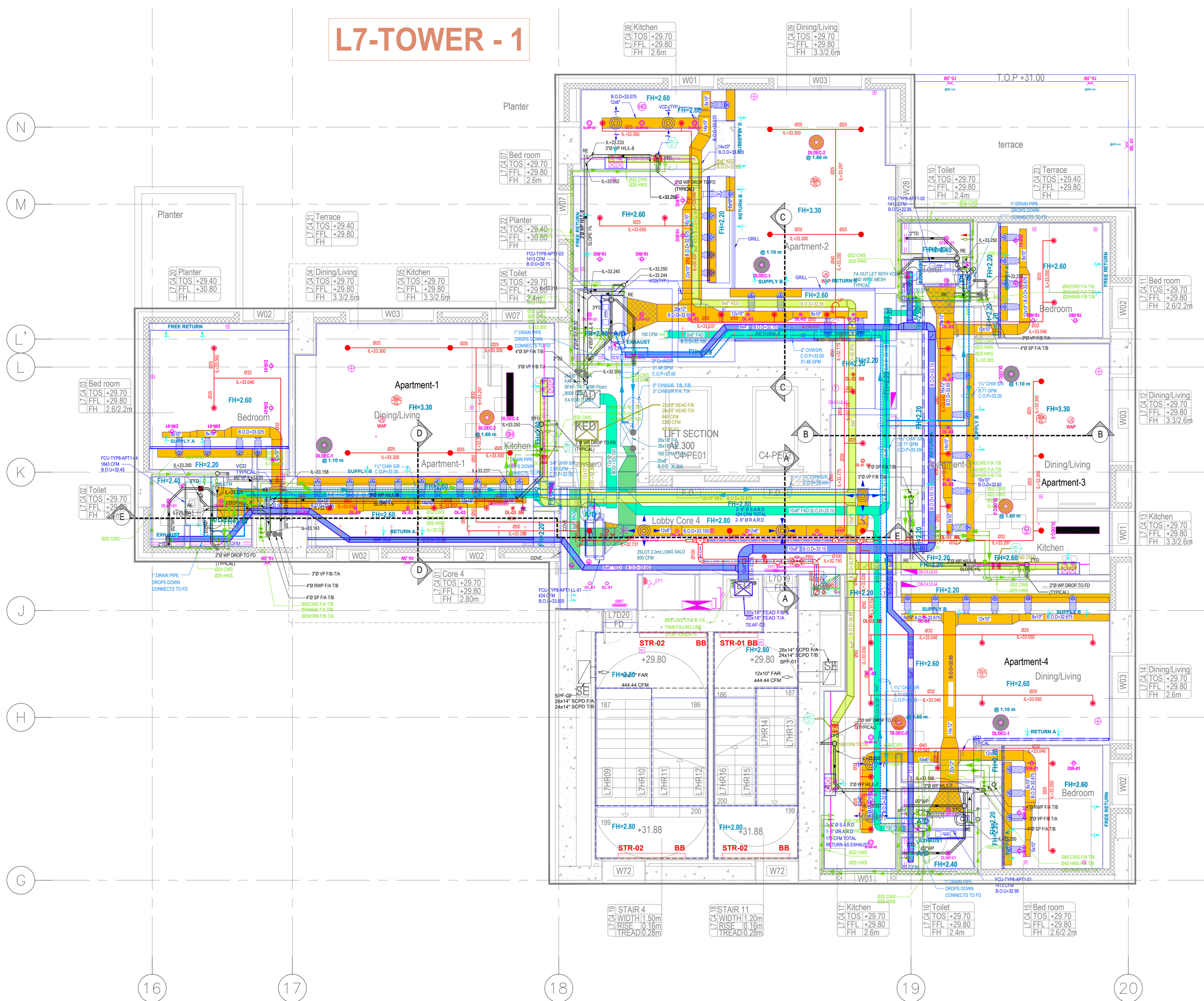


L7-TOWER - 1



LEGENDS :

Symbol	Type	Name	Range	Manufacturer
■	ARCHITECTURAL & STRUCTURAL			
■	DRAINAGE AND WASTE			
■	COLD WATER SUPPLY			
■	FIRE FIGHTING			
■	LIGHT AND POWER			
■	LOW VOLTAGE & FIRE ALARM			
■	SUPPLY AIR DUCT (SAD)			
■	FRESH AIR DUCT (FAD)			
■	KITCHEN EXHAUST AIR DUCT (KEAD)			
■	TOILET EXHAUST AIR DUCT (TEAD)			
■	HVAC CHILLED WATER LINE			
■	STAIRCASE PRESSURIZATION DUCT			

General Notes:

- All dimensions are MM and levels in Mtr.
- All levels to be verified on site prior to any work.
- ALL WORK TO BE EXECUTED ON SITE IN ACCORDANCE WITH THE REQUIREMENTS OF THE KUWAIT FIRE BRIGADE (KFB), REGULATIONS & OTHER LOCAL AUTHORITIES REGULATIONS IN FORCE AND THE BRITISH STANDARDS.
- THIS COMPOSITE DRAWING IS TO BE READ IN CONJUNCTION WITH ALL RELEVANT APPROVED SHOP DRAWINGS.
- ALL SERVICES SHALL BE ABOVE FALSE CEILING UNLESS SPECIFIED OTHERWISE.
- ALL COMMENTS ON APPROVED SHOP DRAWINGS SHALL BE FOLLOWED.
- COORDINATE ACCESS DOOR SHOWN ON DRAWINGS.
- COORDINATE FIRE FIGHTING TEST DRAIN VALVE TO BE ABOVE FIRE HOSE CABINET.
- ALL SERVICES INSIDE APARTMENTS AND COMMON LOBBY SHALL BE CONCEALED TYPE.
- ACCESS DOOR FOR VES VALVES TO BE COORDINATED WITH KITCHEN CABINET.
- KITCHEN EXHAUST FANS TO BE COORDINATED WITH KITCHEN STORE LOCATION.
- LIGHTS POINTS TO BE AWAY FROM OTHER SERVICES.
- WATER PIPES ROUTES SHALL BE AWAY FROM ELECTRICAL AND LV ROOMS.
- COORDINATE LOCATION OF FOLU POWER POINTS WITH FOU AND A/D.
- SERVICES SHALL NOT RUN PARALLEL ABOVE WALLS.
- COORDINATE ALL EXHAUST WITH COVES.
- COORDINATE ALL SERVICES WITH COVES.
- ALL SERVICES SHALL BE COORDINATED WITH ARCHITECTURAL LAYOUT.
- FINAL LOCATION OF SERVICES ON WALL SHALL BE AS PER APPROVED SHOP DRAWINGS.
- FINAL LOCATION AND TYPE OF EXHAUST LIGHT SHALL BE AS PER APPROVED SHOP DRAWINGS.
- FINAL LOCATION AND TYPE OF CAMERAS SHALL BE AS PER REGULATIONS.

LEGENDS :

Symbol	Type	Name	Range	Manufacturer
■	ARCHITECTURAL & STRUCTURAL			
■	DRAINAGE AND WASTE			
■	COLD WATER SUPPLY			
■	FIRE FIGHTING			
■	LIGHT AND POWER			
■	LOW VOLTAGE & FIRE ALARM			
■	SUPPLY AIR DUCT (SAD)			
■	FRESH AIR DUCT (FAD)			
■	KITCHEN EXHAUST AIR DUCT (KEAD)			
■	TOILET EXHAUST AIR DUCT (TEAD)			
■	HVAC CHILLED WATER LINE			
■	STAIRCASE PRESSURIZATION DUCT			

FAWSEC EDUCATIONAL COMPANY
 International Consultant

Main Contractor:
شركة مساعد الصالح وأولاده
Musaad Al-Saleh & Sons Co. Ltd.
 Building & Civil Engineering Contractors

CONTRACTOR/SUB CONTRACTOR COORDINATION RELEASE:

TRADE	SUB-CONT.	DATE	SIGNATURE
ARCHITECT			
ELECTRICAL	CEC		
H.V.A.C	CEC		
PLUMB	CEC		
LIFTS			

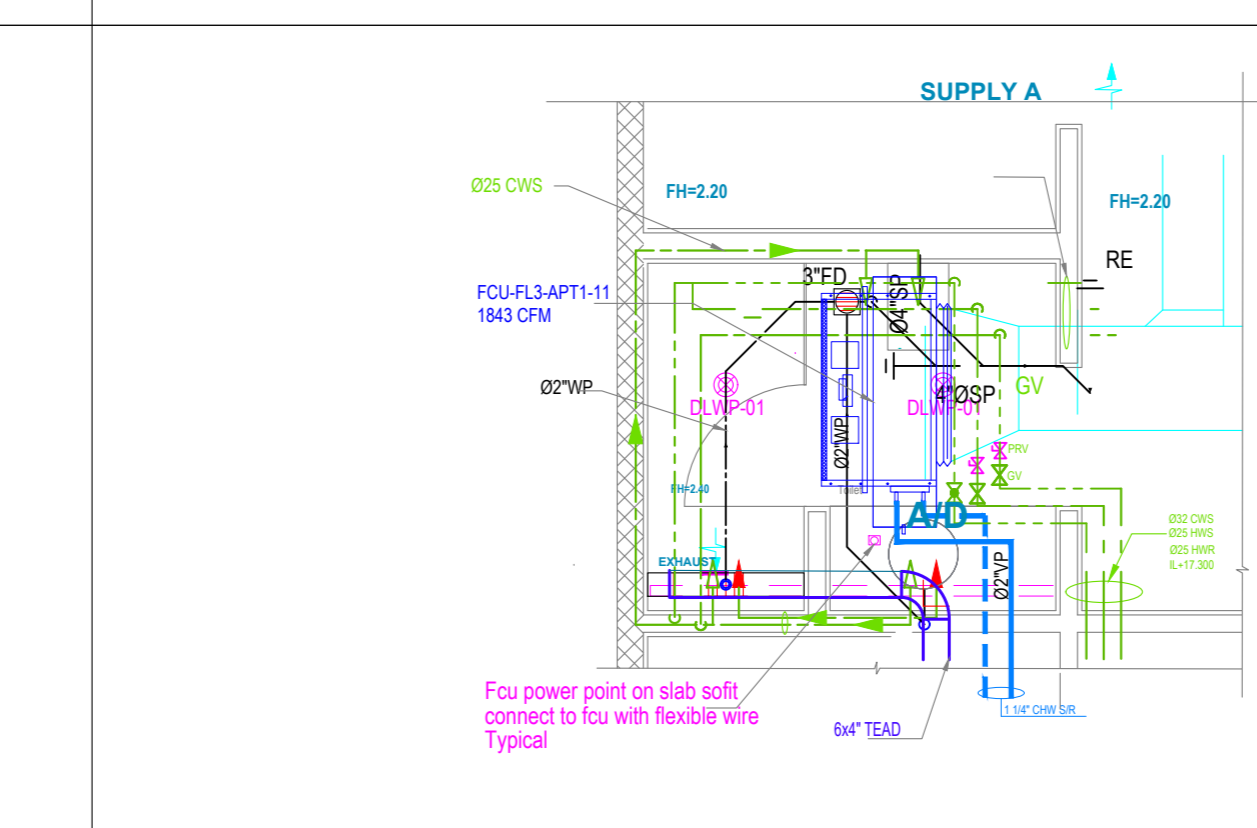
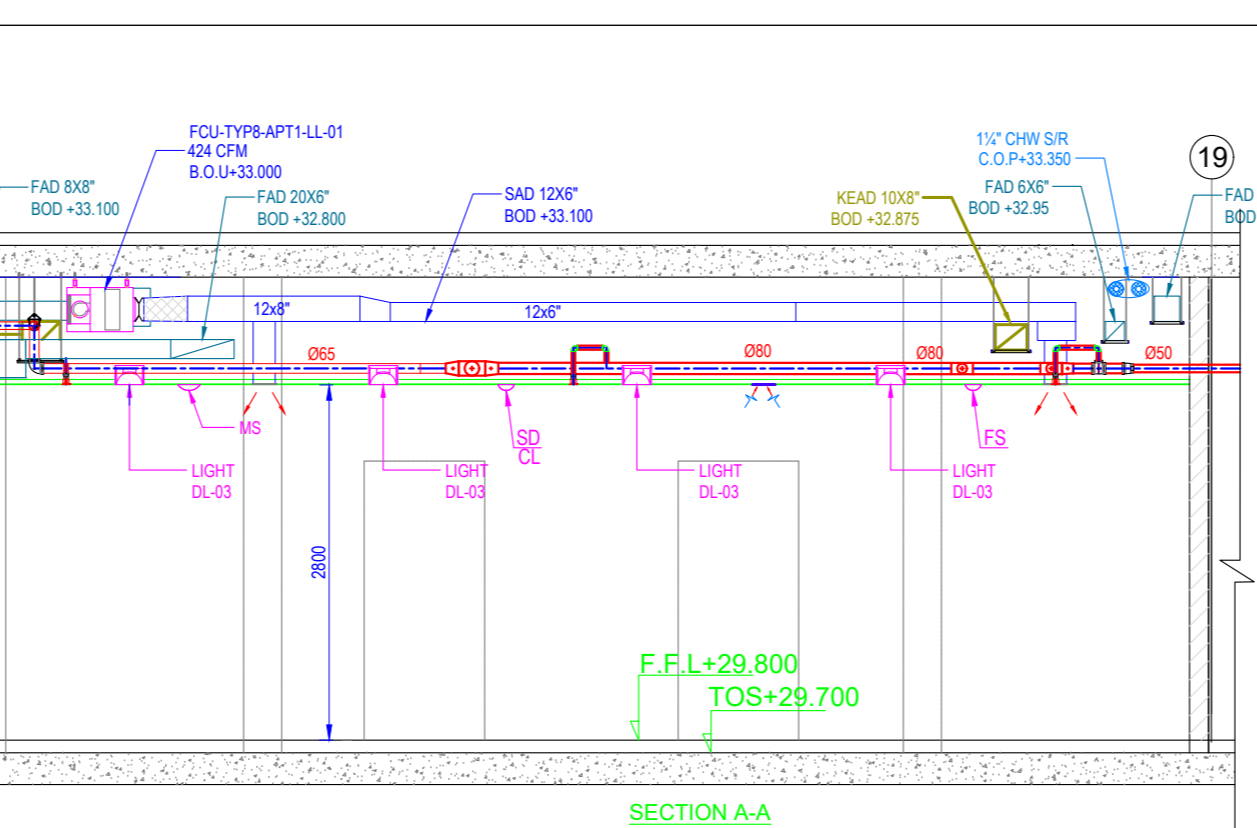
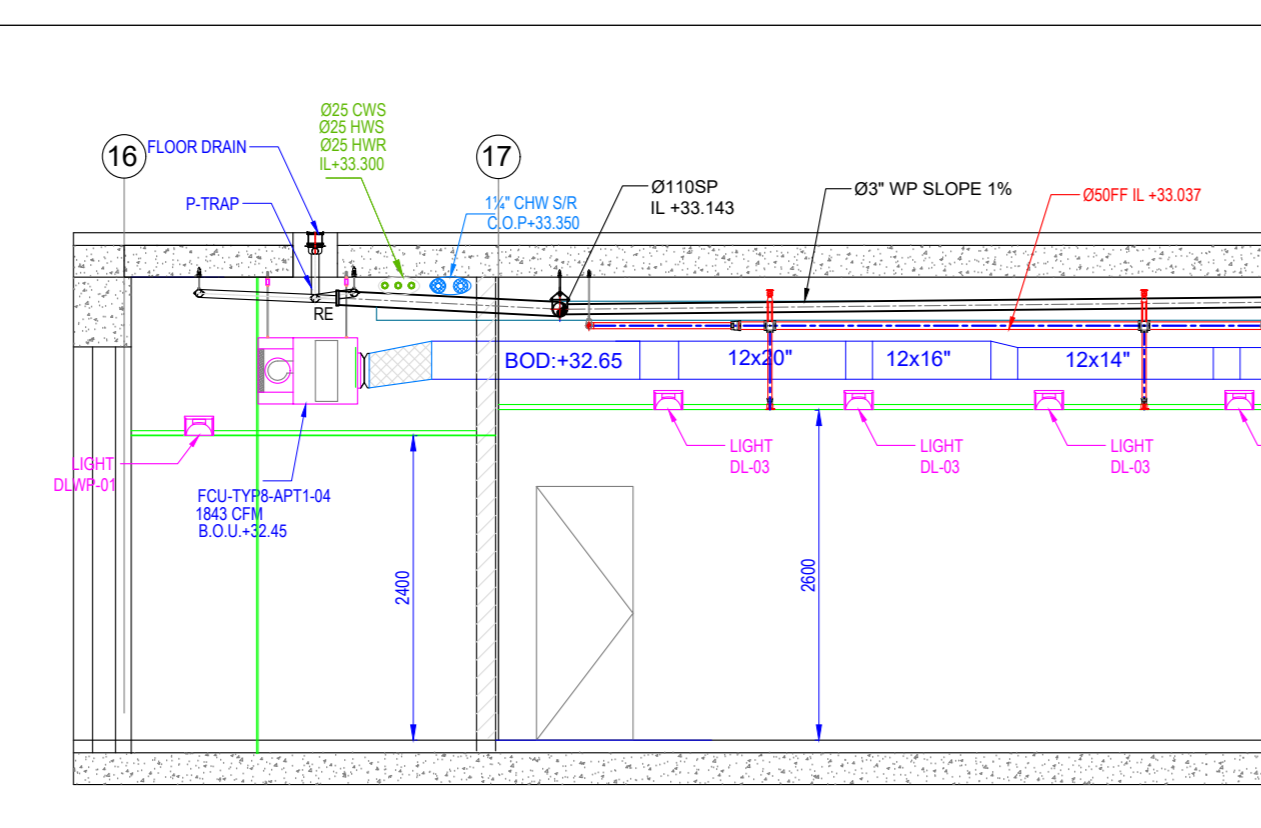
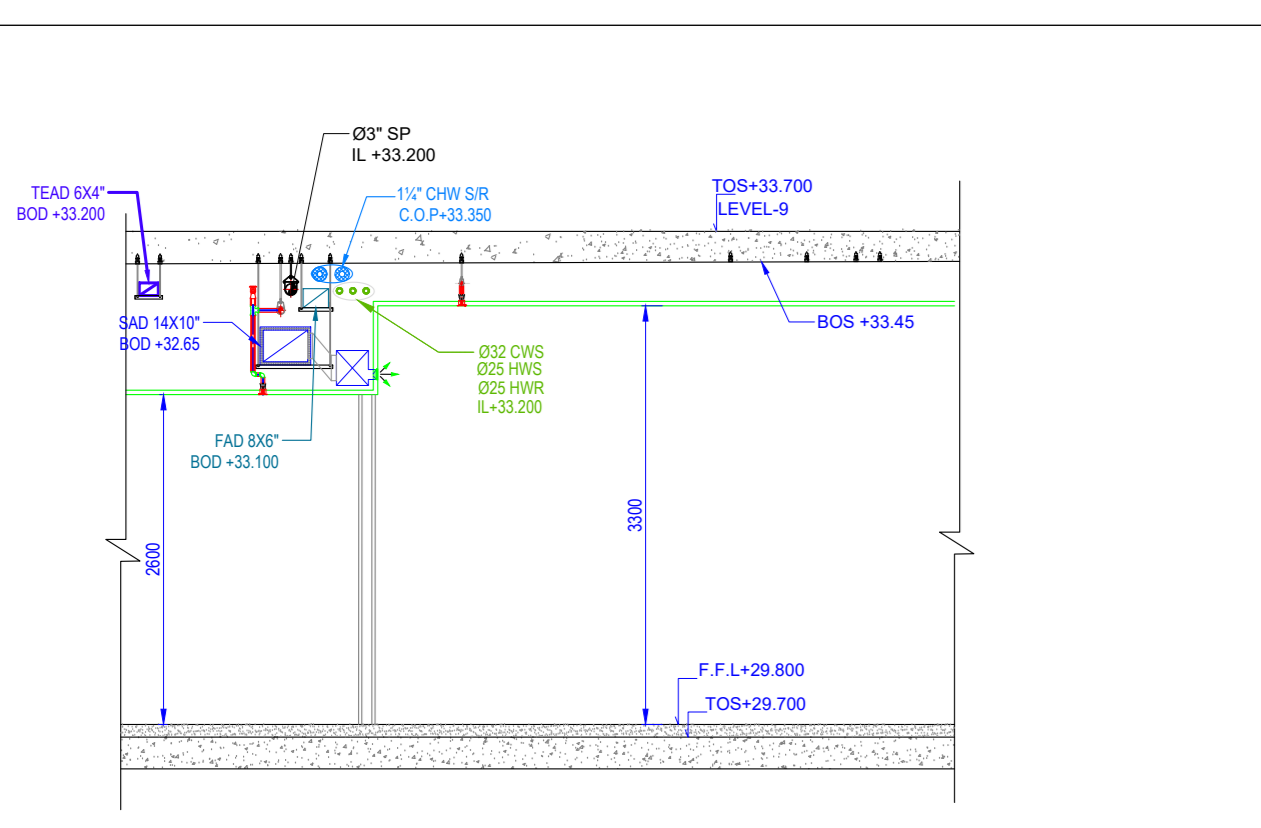
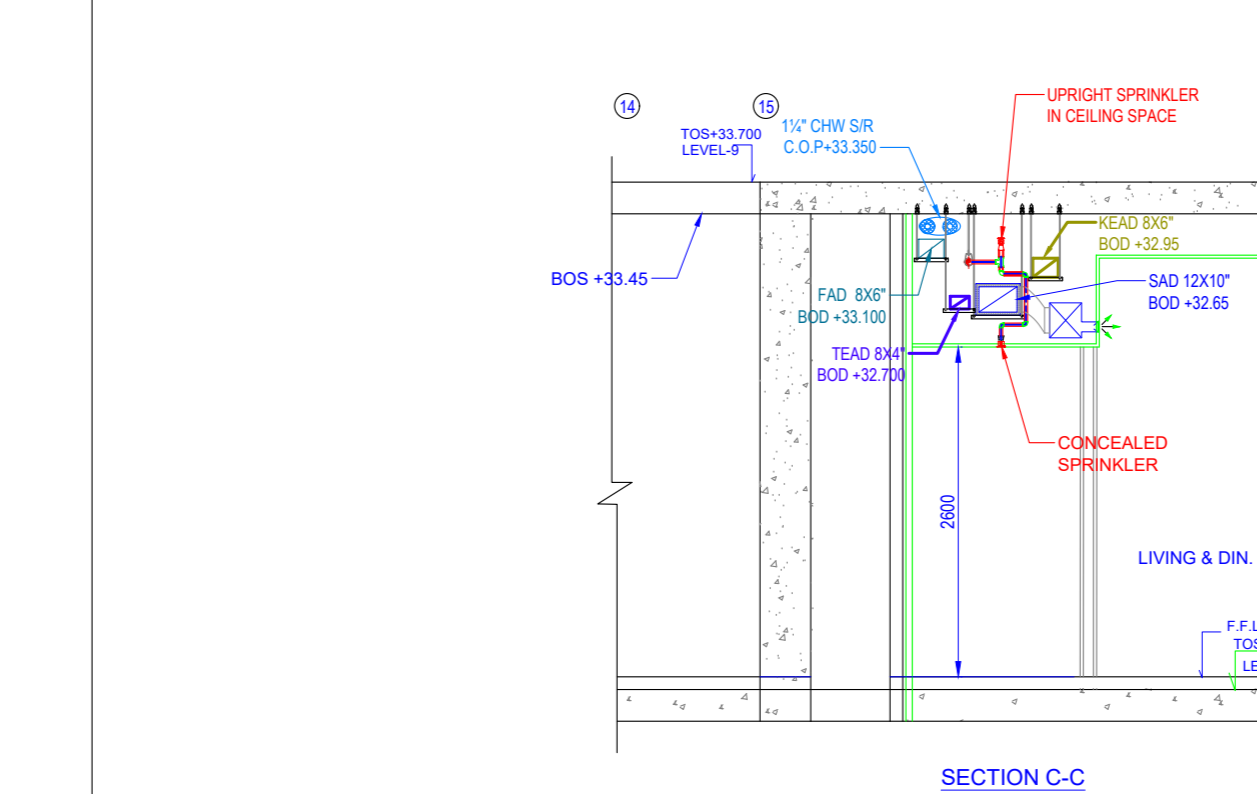
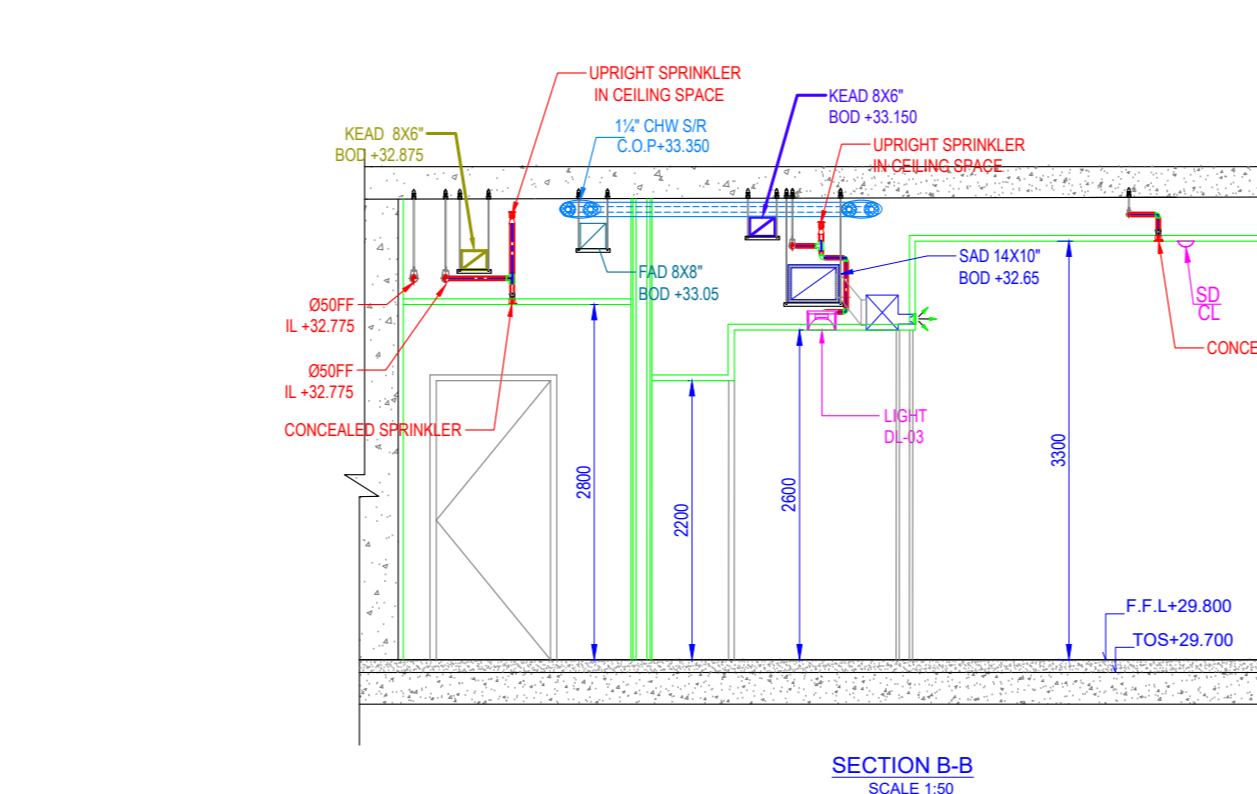
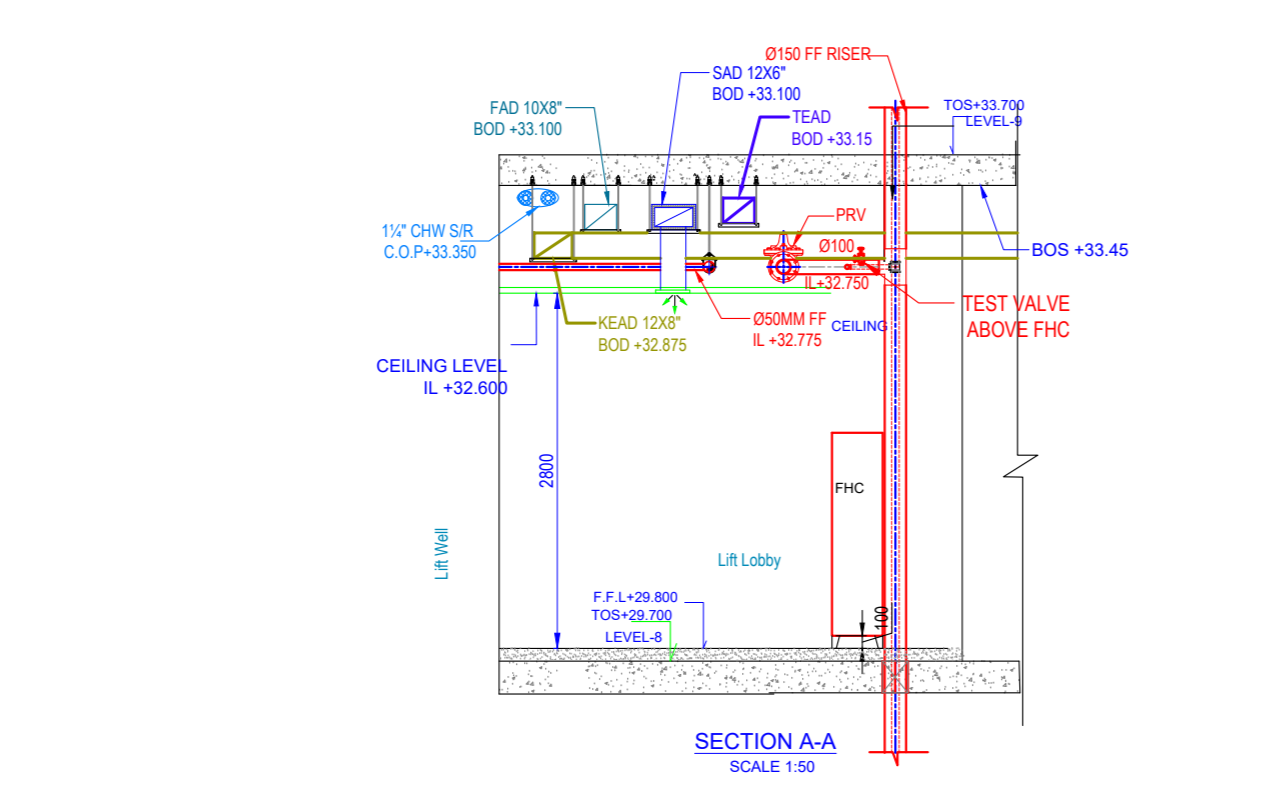
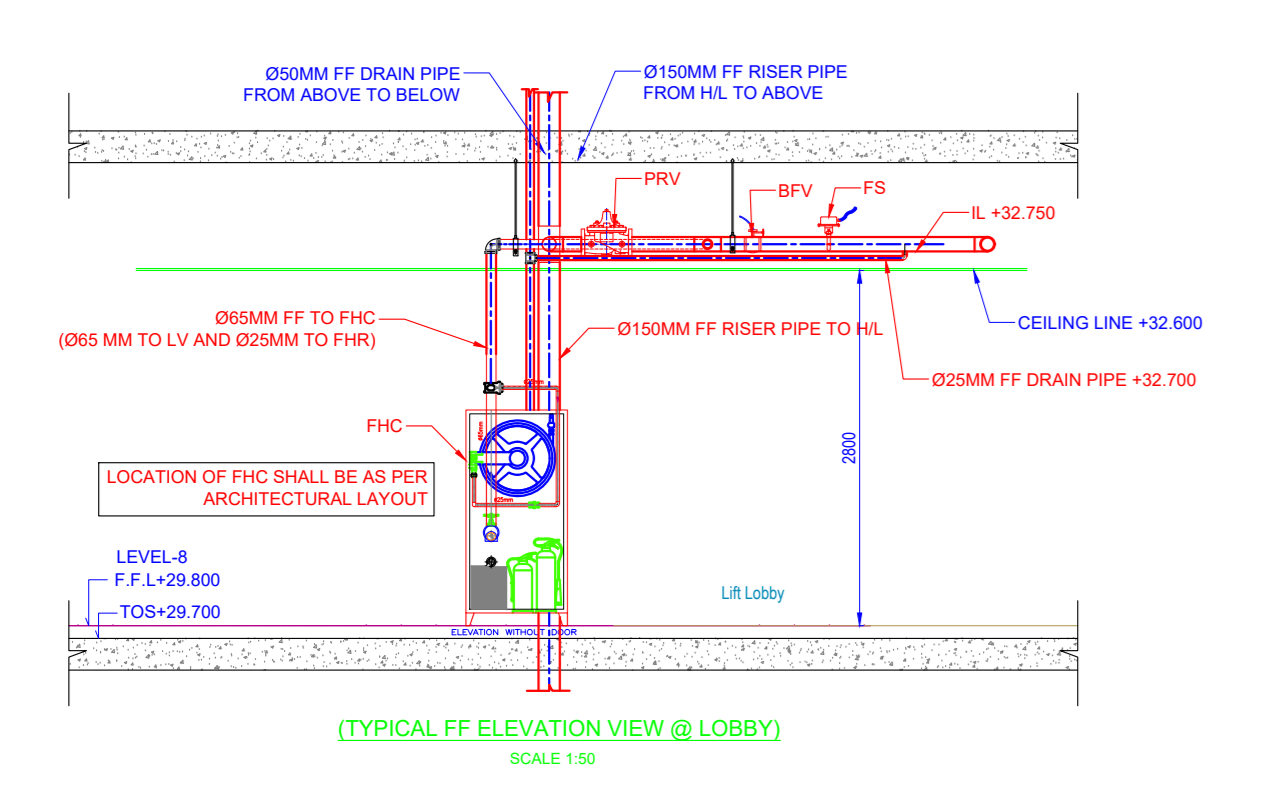
Project Manager:

REVISION	DESCRIPTION	DATE	STATUS
01	FOR APPROVAL	16/09/2017	FOR APPROVAL

Revision Status:

REVISION	DESCRIPTION	DATE	STATUS
01	FOR APPROVAL	16/09/2017	FOR APPROVAL

FAWSEC Campus
 Drawing Title:
Level 7 HL - Composite Layout TOWER - 1 (APARTMENTS)
 Scale: 1:50
 Date: 16/09/2017
 Contract Dwg No. / Shop Drawing No. / Rev. No.: 7th-COM-107-01 / 00



LINE TYPE - LEGENDS :

—	SOIL & WASTE PIPE (SP)
—	RAIN WATER PIPE (RWP)
—	VENT PIPE (VP)
—	COLD WATER SUPPLY (CWS)
—	HOT WATER SUPPLY (HWS)
—	HOT WATER RETURN (HWR)
—	FIRE PIPE (FP)
—	CHILLED WATER SUPPLY (CWS)
—	CHILLED WATER RETURN (CWR)