

# U-PVC SEWAGE & DRAINAGE PIPING SYSTEM



**PLASTIC PIPES & FITTINGS FACTORY  
YOUSIF KHALID AL-ADASANI EST.**

**U-PVC Sewage & Drainage Pipes Dimensions as per DIN 19531, 19534, 8062 & KUWAIT Standard 1092**

Nominal outside diameter	Wall thickness, s, mm			Socket Dimensions mm			
	O.D,mm	N	R <sub>1</sub>	R <sub>2</sub>	d <sub>2</sub>	d <sub>3</sub>	LSS,t
50	1.8	-	2.2	50.3	59.6	50.0	48
75	1.8	-	2.2	75.4	84.6	70.0	55
110	2.2	3	3.2	110.4	120.6	100.0	76
160	3.2	3.6	4.7	160.5	174.3	125	100
200	-	-	4.5	200.6	216.0	150	120
250	7.3	-	6.1	250.6	272.9	165	140
315	9.2	-	7.7	315.7	338.9	200	160
400	11.7	-	9.8	400.8	427.1	220	190

LSS = Length of Solvent Cement Socket

LRS = Length of Rubber Ring Socket

N, R<sub>1</sub>, R<sub>2</sub> wall thickness according to DIN 19531 / 19534 / 8062

**Dimensions of Sewage & Drainage Pipes as Per BS, DIN EN and BS EN Standards**

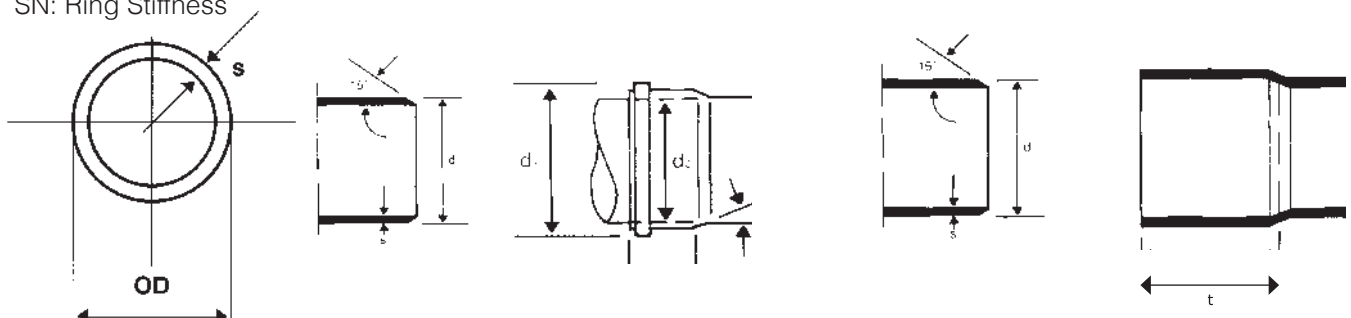
DN (inch)	BS ST. W.T.(mm)					BS EN / DIN EN W.T.(mm)					
	O.D mm	5255	4514	4660	5481	DN/OD	1329-1		1401-1		
							B	BD	SDR 51 SN2	SDR 41 SN4	SDR 34 SN8
-	-	-	-	-	-	32	3.0	-	-	-	-
1¼	36	1.8	-	-	-	36	3.0	-	-	-	-
-	-	-	-	-	-	40	3.0	-	-	-	-
1½	43	1.9	-	-	-	43	3.0	-	-	-	-
-	-	-	-	-	-	50	3.0	-	-	-	-
2	56	2.0	-	-	-	56	3.0	-	-	-	-
-	-	-	-	-	-	75	3.0	3.0	-	-	-
3	82	-	3.2	-	-	82	3.0	3.0	-	-	-
4	110	-	3.2	3.2	-	110	3.2	3.2	-	3.2	3.2
-	-	-	-	-	-	125	3.2	3.2	-	3.2	3.7
6	160	-	3.2	4.1	-	160	3.2	4.0	3.2	4.0	4.7
8	200	-	-	-	4.9	200	3.9	4.9	3.9	4.9	5.9
10	250	-	-	-	6.1	250	4.9	6.2	4.9	6.2	7.3
12	315	-	-	-	7.7	315	6.2	7.7	6.2	7.7	9.2
16	400	-	-	-	9.8	400	-	-	7.9	9.8	11.7

B: Application area code for components intended for use above ground inside building or for components outside buildings fixed onto the wall.

D: Application code for the area under and within 1 m from the building where the pipes and fittings are buried in ground and are connected to the underground drainage and sewerage system.

BD: Application area code for components intended for use for both code B and code D application area.

SN: Ring Stiffness



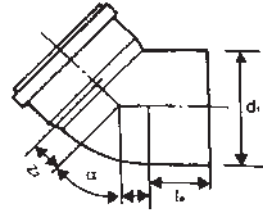
# U-PVC Sewage & Drainage Fittings

DIN 19531, 19534 DIN EN /BS EN 1329/1401 and the Public Authority for Housing Welfare - Kuwait

## Bends 45° \*(BER)

كوع 45° بحلقة مطاطية

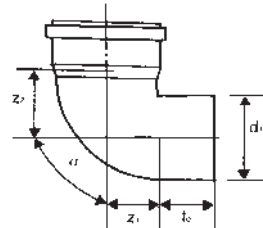
d <sub>1</sub>	α = 45°		W.T. S <sub>1</sub>	te
	Z <sub>1</sub>	Z <sub>2</sub>		
50	13	19	3.5	53
75	18	24	3.5	61
110	25	31	3.5	80
160	36	44	4.8	95



## Bends 87.5° \*(BER)

كوع 90° بحلقة مطاطية

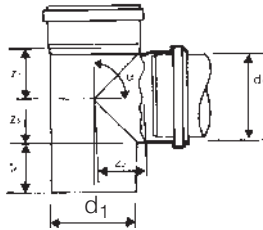
d <sub>1</sub>	α = 87.5°		W.T. S <sub>1</sub>	te
	Z <sub>1</sub>	Z <sub>2</sub>		
50	28	31	3.5	54
75	40	43	3.5	64
110	57	61	3.5	80
160	83	89	4.5	85



## Tee Branch 87.5° \*(TR & TRR)

تي بحلقة مطاطية 87.5°

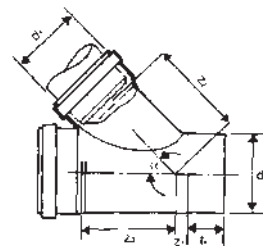
d <sub>1</sub>	d <sub>2</sub>	α=87.5°			W.T. S <sub>1</sub>	te
		Z <sub>1</sub>	Z <sub>2</sub>	Z <sub>3</sub>		
50	50	25	32	39	3.5	53
75	50	27	43	47	3.5	62
75	75	43	51	51	3.5	62
110	50	43	68	45	3.5	80
110	75	40	68	45	3.5	78
110	110	57	68	62	3.5	80
160	160	83	90	83	4.5	81
160	110	62	86	59	4.5	92



## Tee Branch 45° \*(YR & YRR)

واي بحلقة مطاطية

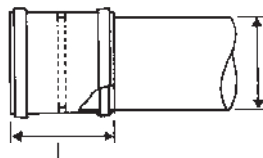
d <sub>1</sub>	d <sub>1'</sub>	α=45°			W.T. S <sub>1</sub>	te
		Z <sub>1</sub>	Z <sub>2</sub>	Z <sub>3</sub>		
50	50	13	60	60	3.5	55.5
75	50	1	78	73	3.5	62.0
75	75	19	91	91	3.5	64.0
110	50	17	103	91	3.5	81.0
110	75	1	116	108	4.0	80.0
110	110	25	133	133	4.0	81.0
160	110	2	167	159	4.8	96.0
160	160	36	193	193	4.8	96.0



## Coupler with Sleeve \*(CORS)

وصلة ربط بحاجز بحلقة مطاطية

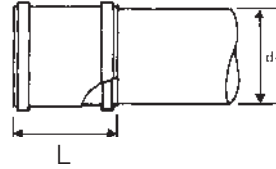
d <sub>1</sub>	W.T. S <sub>1</sub>	L
50	3.3	113
75	3.3	134
110	3.5	160
160	4.8	200



## Repair Coupler without Sleeve \*(COR)

وصلة تصليح بدون حاجز بحلقة مطاطية

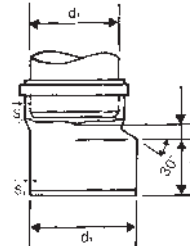
d <sub>1</sub>	W.T.		L
	s <sub>1</sub>		
50	3.3		113
75	3.3		134
110	3.5		160
160	4.8		200



## Connecting Reducer \*(RER)

محول بحلقة مطاطية

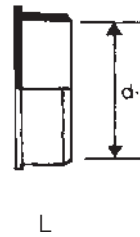
d <sub>1</sub>	d <sub>1</sub> '	W.T.			te
		s <sub>1</sub>	s <sub>2</sub>	z <sub>1</sub>	
75	50	3.3	3.3	28	64
110	50	3.3	3.3	42	78
110	75	3.5	3.3	26	77
160	110	4.8	3.5	42	97



## Socket Plugs (SP)

سدّه

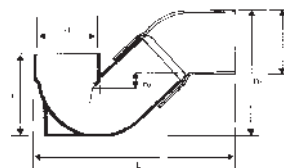
d <sub>1</sub>	W.T.		L
	s <sub>1</sub>		
50	2.5		20.0
75	2.8		25.0
110	3.5		31.5
160	4.2		40.0



## WC - P - Traps (PT)\*

كوع مدفع لصق + كوع مفتوح

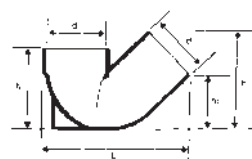
d <sub>1</sub>	h <sub>1</sub>	h <sub>2</sub>	h <sub>3</sub>	L
110	150	25	222	360



## WC - U - Traps (UT)\*

يو تراب لصق

d <sub>1</sub>	h <sub>1</sub>	h <sub>2</sub>	h <sub>3</sub>	L
110	150	108	182	263

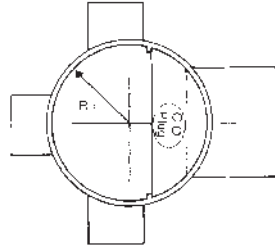
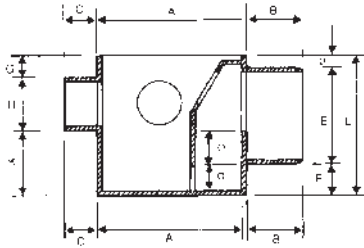




## Floor Traps (FDOI)

مصرف ارضي بمدخل مفتوحة

size	A	B	C	D	E	F	G	H	K	L	O	O'
6"/4"/2"	168	64.5	38.5	14.0	110.5	36.0	26.0	58.0	76.0	160.5	37.5	30.0
6"/3"/2"	168	64.5	38.5	13.5	75.2	71.0	26.0	58.0	76.0	160.5	40.0	30.0

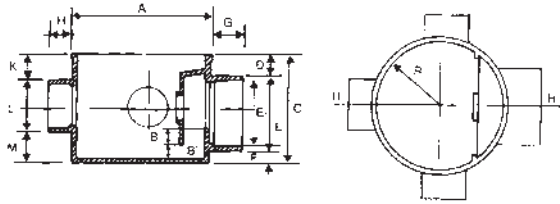


## Floor Traps

مصرف ارضي بثلاث مداخل مفتوحة

CODE	Size	A	B	B <sub>1</sub>	C	D	E	E <sub>1</sub>	F	G	H	K	L
FT	4"/3"/2"	130	17.0	14.0	120.5	21.0	83.0	75	13.5	37.5	27.0	29.0	58.0
	4"/2"/2"	130	17.0	14.0	120.5	32.0	57.5	50	29.5	37.5	27.0	29.0	58.0
FTS	4"/3"/2"/2"/2"	117	16.5	18.5	101.5	14	75	63	12.5	41	32	10.5	56.5
	4"/2"/2"	117	16.5	18.5	101.5	22.5	57.5	50	22	32	32	10.5	56.5

FT



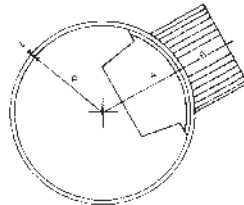
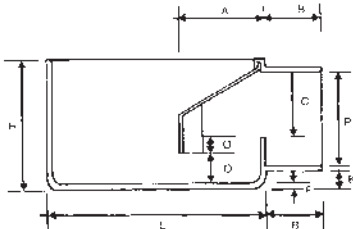
FTS



## Mini Floor Trap (MFT)

مصرف ارضي صغير

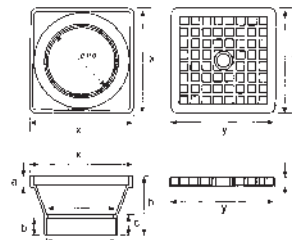
size	A	B	C	F	P	K	L	N	R	H	O	O <sub>1</sub>
4x2"	44.8	31.3	42.5	4.1	50.1	6.0	116.7	3.1	55.0	70.4	9	16



## Square Hopper (SH)

صفحة مطر مربع + غطاء شبك

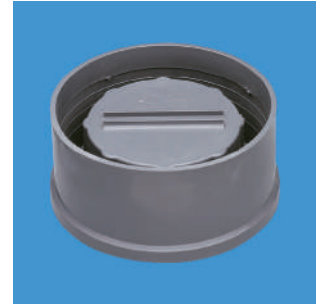
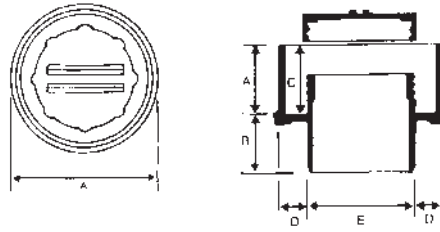
d	a	b	c	h	x	y	L
110	17	25	30	90	164	147.5	13



### Floor Clean out (FCO)

فتحة ارضية للتنظيف

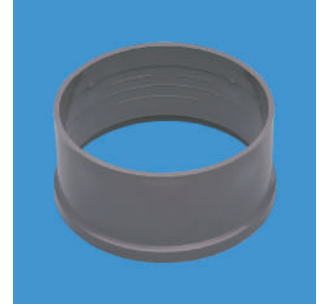
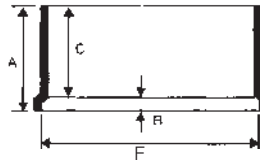
A	A''	B	C	D	E
70.0	177.0	60.5	72	33	110



### Floor Trap Extension (FDEA)

وصلة تطويل المصرف الارضي

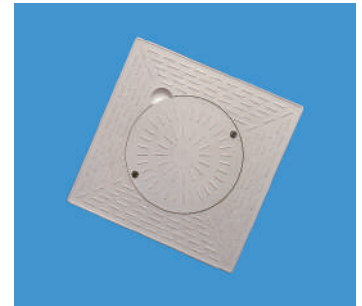
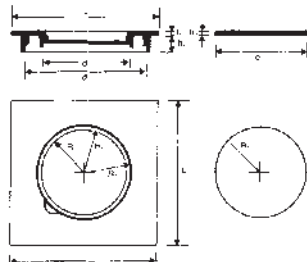
Size	A	B	C	E
4"	90	12	78	121.3
6"	81	9	72	168.1



### Inspection Cover (ICO) 160/110 mm

غطاء طبة تسليك

L	d <sub>1</sub>	d <sub>2</sub>	d <sub>3</sub>	h <sub>1</sub>	h <sub>2</sub>	h <sub>3</sub>	R <sub>1</sub>	R <sub>2</sub>	R <sub>3</sub>	R <sub>4</sub>
200	130	168	126.6	7	23	5	54.25	60	63.75	63.3

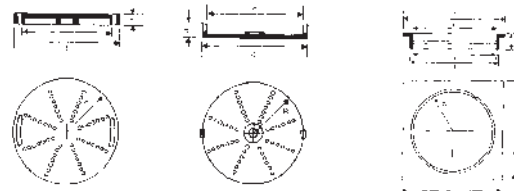


### Floor Trap Cover 160 mm Perforated (FDG)\*\*

غطاء مصرف ارضي شخال

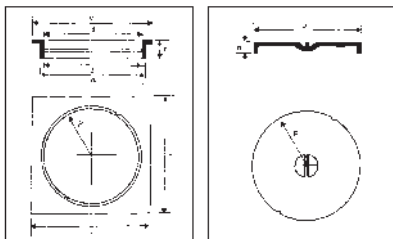
d <sub>1</sub>	168
t	4.2
h <sub>1</sub>	30.0
h <sub>2</sub>	15.5
R	84.0
L	200.0

d <sub>1</sub>	d <sub>2</sub>	d <sub>3</sub>	d <sub>4</sub>	h <sub>1</sub>	h <sub>2</sub>	R <sub>1</sub>	R <sub>2</sub>
146	168	158	149	16	20	84	79

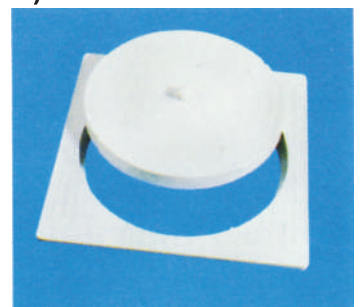


### Floor Trap Cover 160 mm Blind for Clean out (FDK)\*\*

غطاء طبة تسليك



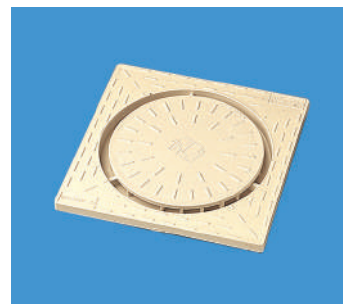
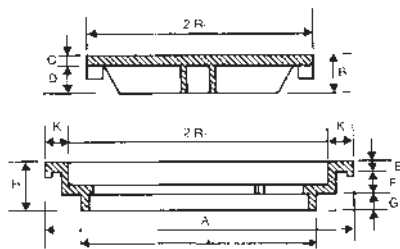
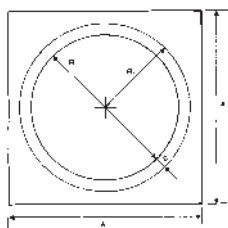
d <sub>1</sub>	t	h <sub>1</sub>	h <sub>2</sub>	R	L	d <sub>1</sub> ''
168	4.2	30	15.5	84	200	168



### Mini Floor Trap Cover (MTC)\*\*

غطاء مصرف ارضي صغير

$R_1$	$R_2$	Z	A	B	C	D	E	F	G	H	K	N	L
47.8	61	13.2	147	18.4	4.3	14.1	7.8	6.8	8.0	22.6	12.5	6.0	110

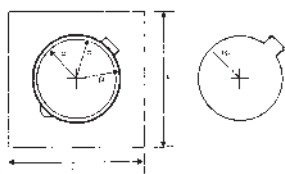
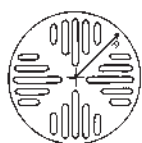


### Floor Trap Cover 160/110 mm (FTC)\*\*

غطاء مصرف ارضي بباب

$L_1$	t	$R_1$
118	4	59

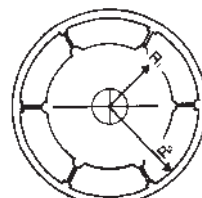
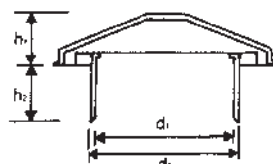
L	$D_1$	$D_2$	$D_3$	$h_1$	$h_2$	$h_3$	$R_1$	$R_2$	$R_3$	$R_4$
200	130	168	126.6	7	23	5	54.25	60	63.75	63.3



### Ventillation Cowl (VC)

طربوش تهويه

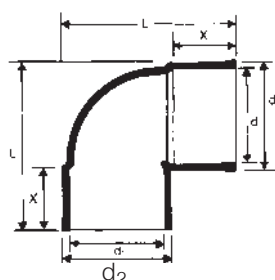
$d_1$	$d_2$	$h_1$	$h_2$	$R_1$	$R_2$
50	63.0	35.5	42.5	25.1	60.4
75	87.1	35.5	42.5	37.6	60.4
110	123.0	42.0	43.0	55.0	80.5



### Bends 87.5° Double Socketed (BEDS)

كوع 90° براسين لصق

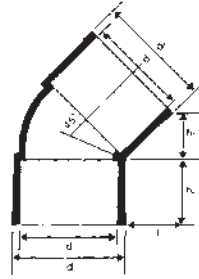
$d_1$	$d_2$	L	X
50	56.5	90.0	33.0



### Bends 45° Double Socketed (BEDS)

كوع 45 براسين لصق

$d_1$	$d_2$	$h_1$	$h_2$	L
50	56.5	34.0	24.0	21.0

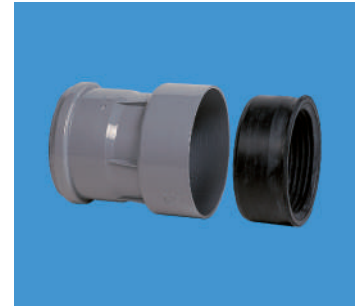
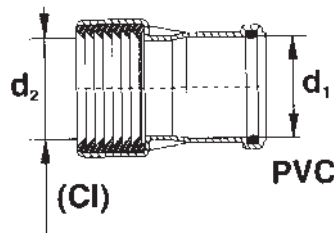


### CI /PVC Connector (CCID)

محول فونت الى بلاستيك

	$d_1$	$d_2$
4"/110mm	110	102
3"/75mm	75	81.5

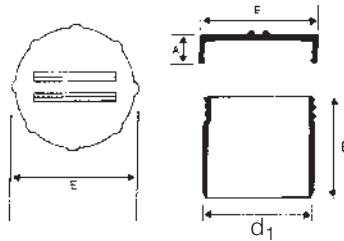
Note: Size 50mm is available



### Access Plug with Threaded Cap (APTC)

سدة بسن للتسليك

$d_1$	A	B	E
110	27.0	99.5	121.5

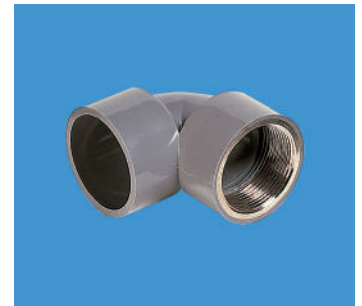
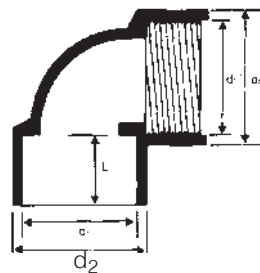


### Bends 90° with Nickle plated female thread (BNFT)

كوع بسن معدني زاوية مهارب

$d_1 \times d_1''$	$d_2$	$d_2'$	L
50x1½	58	58	31

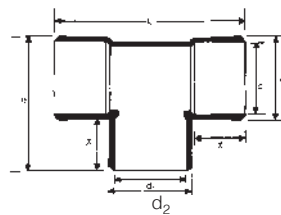
Also available with plastic thread (BSFT)



### Tee Equal All Socketed (TDS)

تي براسين لصق

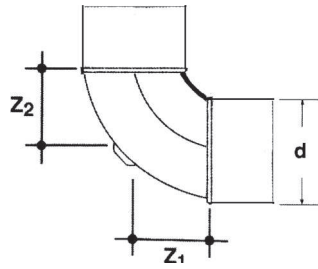
$d_1$	$d_2$	L	h	X
50	56.5	127	92	36





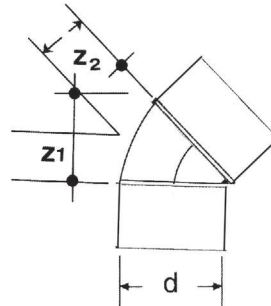
**Elbow 87.50°**  
**Rubber Ring Joint (BEAR)**  
 كوع 87.5° بحلقة مطاطية

d	Z <sub>1</sub>	Z <sub>2</sub>
110	87	87



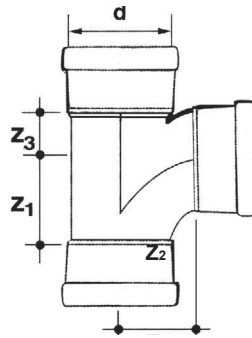
**Elbow 45° Rubber Ring Joint (BE AR)**  
 كوع 45° بحلقة مطاطية

d	Z <sub>1</sub>	Z <sub>2</sub>
110	37	37
160	44	44



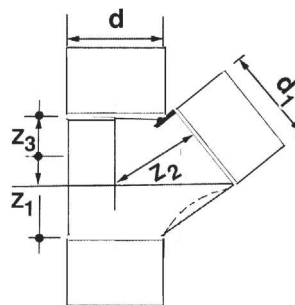
**Tee 87.5° Rubber Ring Joint (TEAR)**  
 تي 87.5° بحلقات مطاطية من جميع الجهات

d	Z <sub>1</sub>	Z <sub>2</sub>	Z <sub>3</sub>
110	87	87	57



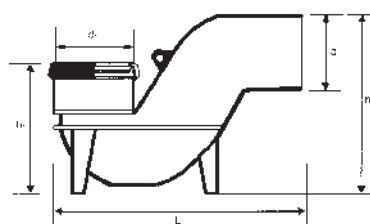
**(Y) Branch 45° Rubber Ring Joint (YBAR)**  
 واي جرف بحلقات مطاطية من جميع الجهات

d	d <sub>1</sub>	Z <sub>1</sub>	Z <sub>2</sub>	Z <sub>3</sub>
110	110	40	136	136
160	110	4	168	158
160	160	46	193	193



**PTBR**  
 كوع مدفع

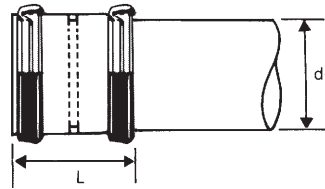
d <sub>1</sub>	h <sub>1</sub>	h <sub>2</sub>	L
110	193	248	325



## Coupler (COAR)

وصلة ربط بحلقات مطاطية

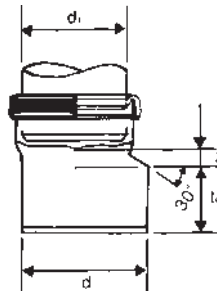
d1	L
110	125
160	155



## Reduced Socket End (REAR)

محول بحلقة مطاطية

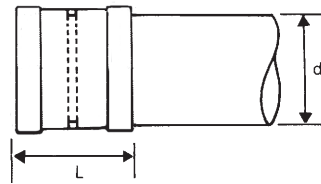
d	d1	z	te
160	110	46	90



## COUPLER, COAS

وصلة ربط

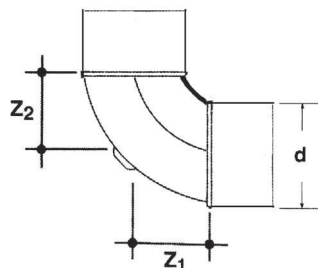
d1		L
inches	mm	
2	56	64
3	82	92



## ELBOW 87.5° BEAS

كوع 87.5°

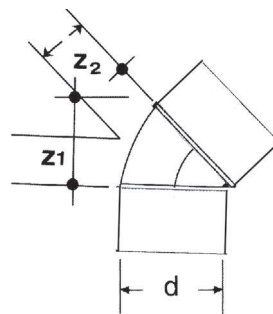
d		Z1	Z2
inches	mm		
2	56	44	44
3	82	75	75



## ELBOW 45° BEAS

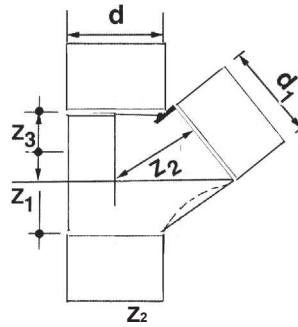
كوع 45°

d		Z1	Z2
inches	mm		
2	56	16	16
3	82	38	38



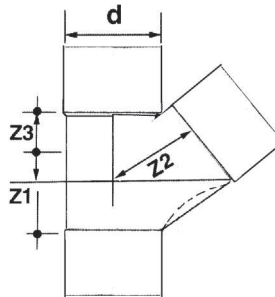
**TEE 87.5° TEAS**  
87.5° تي

d		Z <sub>1</sub>	Z <sub>2</sub>	Z <sub>3</sub>
inches	mm			
2	56	44	44	27
3	82	74	85	29



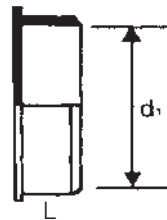
**Y BRANCH 45° (YBAS)**  
45° واي

d		Z <sub>1</sub>	Z <sub>2</sub>	Z <sub>3</sub>
inches	mm			
2	56	41	32	43
3	82	64	46	66



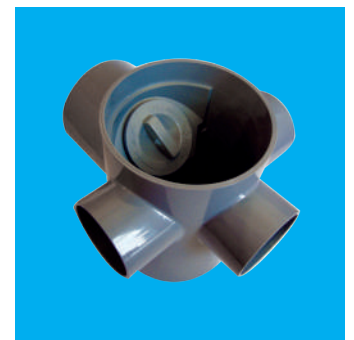
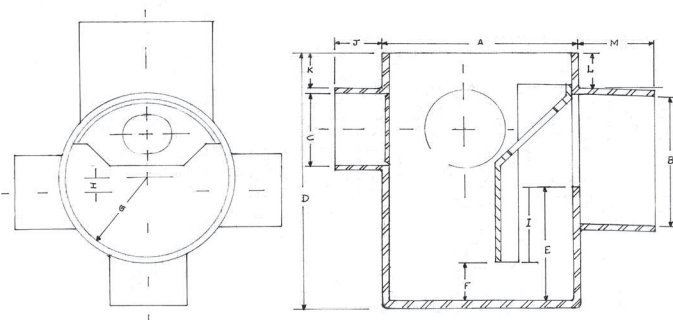
**REDUCER, (REAS)**  
محول

d		d <sub>1</sub>	L
inches	mm		
3x2	82x56	56	47
4x2	110x56	56	47
4x3	110x82	82	47



**Floor Traps (FT-BS)**

Size mm	A	B	C	D	E	F	G	H	I	J	K	L	M	N
110x82x56	117.5	82	56	163.0	74.0	26.0	110.0	10.0	48.0	30.0	23.0	23.0	43.0	2°



Note : All measurement in mm otherwise metioned. For other sizes of lifting not listed in this catalogue or other types of pipe accessories please contact our sales department.

- \* 1) 50 and 75 mm sizes are available in grey colour with rubber ring or solvent cement joints.
- 2) 110 mm size is available in grey and orange colour with rubber ring or solvent cement joints.
- 3) 160 mm available in orange colour with rubber ring joints.

\*\* Other colours available upon special request.



**Plastic Pipes & Fittings Factory  
Yousif Khalid Al-Adasani Ent.**

P.O. Box 1653 Safat 13017 Safat, Kuwait  
Sabhan Industrial Area.

Tel.: 2474 3800 - 2474 3801 - 2473 0225 - 2473 0226 - 2471 4870

Fax No.: 2471 8258 - 2476 4115

Website: [www.aladasani.com](http://www.aladasani.com) Email: [info@aladasani.com](mailto:info@aladasani.com) • [sales@aladasani.com](mailto:sales@aladasani.com)